

PTE

2021/2022



THE WAR BEING WAGED
BY DARLA CONTOIS

PRAIRIE THEATRE EXCHANGE

LIVE PERFORMANCES

Nov. 3 - 21 / 2021

ONLINE

Dec. 2 - 12 / 2021

PTE.mb.ca

SPONSORED BY



DIGITAL PRODUCTION SPONSOR



EXCLUSIVE PRINT MEDIA PARTNER

Winnipeg Free Press



MESSAGE FROM THE ARTISTIC DIRECTOR

After a 20 month pause, we are back in the theatre together. This is a moment that everyone here at Prairie Theatre Exchange has been dreaming about: sharing time and space together with you to experience a story. We are overwhelmed with feelings of gratitude, inspiration, and most of all, joy.

When deciding how to reopen our theatre, we were committed to ensuring that it be an Indigenous playwright and story to begin the live season. How fortunate we are to have the trust of Darla Contois to bring her play to life for the very first time. *The War Being Waged* was originally commissioned in 2018 and now, three years later, after the world has been shaken to its very core, her work resonates even more deeply.

Darla's voice has brought us all back together. To consider. To re-consider. To see ourselves. To see the world around us. And to hold on to love as a way forward. To remember the power of love. This is how we begin again.

And this play is the first of three live offerings this season. It will also be one of three digital productions. It is the play that lives in both of our performance spaces: our theatre and the digital world. There is so much more theatre to come!

We are grateful to Darla. We are grateful to our donors, funders, and community for keeping us going during this difficult time. And we are grateful to you for returning and for bringing our theatre to life again.

It's a new era of live theatre in Winnipeg. And we can't wait to start again, with you.

With love,

A handwritten signature in black ink that reads "THOM". The letters are stylized and connected, with a long horizontal stroke above the "H" and "O".

THOMAS MORGAN JONES,
ARTISTIC DIRECTOR

PRAIRIE THEATRE EXCHANGE IS PROUD TO PRESENT

THE **WAR** BEING WAGED

BY DARLA CONTOIS

FEATURING

Tracey Nepinak

Emily Solstice Tait *AND*

THE VOICE OF **Tantoo Cardinal**

Thomas Morgan Jones *DIRECTOR*

Darla Contois *ASSOCIATE DIRECTOR*

Andy Moro *SET/LIGHTS/PROJECTION DESIGN*

Andy Moro *with* **Brenda McLean** *COSTUME DESIGN*

MJ Dandeneau *COMPOSER/SOUND DESIGN*

Jera Wolfe *CHOREOGRAPHER*

Karyn Kumhyr *STAGE MANAGER*

Michael Duggan *ASSISTANT STAGE MANAGER*

Aileen Audette *MAKE-UP ARTIST*

SPECIAL THANKS TO

Coco Stephenson *for allowing MJ Dandeneau to use a portion of his music within her composition.*

RUNTIME: 70 MINUTES, NO INTERMISSION

AUDIENCE ADVISORY: THIS PRODUCTION INCLUDES THE USE OF THEATRICAL HAZE

Prairie Theatre Exchange is a not-for-profit theatre and an active member of the Professional Association of Canadian Theatres (PACT), and engages, under the terms of the Canadian Theatre Agreement, professional artists who are members of the Canadian Actors' Equity Association.

DIRECTOR'S NOTES

The journey of this play has been astonishing.

It began as a poem. Then came a short story. Then came the idea of dance.

Then came all of the collaborators and artists who, for months on end, have been meeting to dream, to discuss, and to feel our way through the material.

At these meetings, performers would give design insight and ideas.

The playwright wrote design prompts. The choreographer would express through music or sound. The sound designer would play with sound and the recorded voice.

All of us together, dancing through our individual craft, but more importantly through our humanity.

Everything you will see on stage has come about as a result of deep conversation, a supported and lengthy process, and a level of vulnerability that is almost impossible to describe. It is an act of community and an act of love.

It is a story of three generations that is told in three performance genres. Together, it becomes theatre. It is a story narrative, it is an emotional narrative, and it invites us all to think about the past, the present, and the future, colliding all at once in this moment.

And it is all for you. Welcome to *The War Being Waged*.

- **Thomas Morgan Jones**, DIRECTOR

We invite you to join us in recognizing that we are on Treaty 1 land, the traditional territory of the Anishinaabeg, Cree, Dakota and Métis nations. We are a committed partner of Winnipeg's Indigenous Accord, and, as a part of our journey to reconciliation, PTE promises to bring Indigenous stories and voices to the PTE stage every season.

FROM THE PLAYWRIGHT

Tansi, Nitooteemuk? Niwihowin Wasakahaw Mikisu Iskwew, otherwise known as Darla Contois. I am a proud Cree/Salteaux theatre artist from this beautiful territory we share.

The story you are about to experience is incredibly personal to me. It is based on one of my deepest fears, my experiences and as well as a response to one of the most important questions we ask ourselves as Indigenous people: *“What are you fighting for?”*

In it, you will find remnants of real people, real conflicts and real relationships. I hope you’re ready to listen with an open heart.

Ekosani

- **Darla Contois**, PLAYWRIGHT

Permission was sought and granted for the mention of any real person living or passed on.



This play was originally commissioned in 2018. For over a year prior to production, the core team of Darla, Andy, Jera, MJ, Tracey, Emily, and Thom have been working and meeting regularly to develop the play. This has included commissions for designers and the choreographer, supporting their processes in a way similar to that of a playwright.

MEET THE ARTISTS



Tantoo Cardinal VOICE-OVER

Tantoo Cardinal is an award-winning actress of Indigenous descent who was most recently seen on the ABC Television Network series *Stumptown*, playing Sue Lynn Blackbird. A Canadian native, she has appeared in over 120 film and television projects over the course of her 48-year career. She is a multi-award-winning performer (including a lifetime achievement award by the Canadian Screen Awards), a Member of the Order of Canada, and a recipient of the 2020 Governor General's Performing Arts Lifetime Artistic Achievement Award in Broadcasting and Film. Her credits include numerous plays, television programs, and films, including *Legends of the Fall*, *Dances with Wolves* and *Black Robe*. Television credits include *SEE*, *Westworld*, *Longmire*, *Mohawk Girls*, *Frontier*, and *Blackstone*. Theatre work includes playing Gertrude in *Hamlet*, Regan in *King Lear*, and Pelajia in *The Rez Sisters*.



Tracey Nepinak PERFORMER

Tracey Nepinak is truly grateful to be back performing live again in Winnipeg. The last two years have deepened her appreciation for our theatre community; playing Dori in *Katharsis* during lockdown for Prairie Theatre Exchange was just not the same without a live audience. Tracey recently returned from Stratford this summer playing Philomena Moosetail in *The Rez Sisters*. Other recent credits include: Rae Anna in *Honour Beat* (The Grand London & Theatre Calgary); Agatu in *The Third Colour* (Prairie Theatre Exchange); Crazy Bone in *A Brief History of Crazy Bone* (Theatre Projects Manitoba).



Emily Solstice Tait PERFORMER

Emily's practice is rooted in contemporary dance but happily crosses into theatre. She is of mixed settler and Ojibway ancestry (Berens River First Nation) and her dances have enlivened The Manitoba Museum, The Forks National Historic Site, and the shores of Lake Winnipeg. Past favourite performances include Winnipeg Contemporary Dancers *Actualize* (Ming Hon), *moi, suel-e* (Théâtre Cercle Molière), *Confluence* (Raven Spirit Dance) and dancing on frozen Lake Winnipeg in *The ___ Place* with CBC Arts.



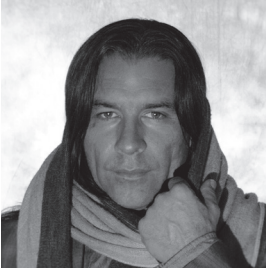
Thomas Morgan Jones DIRECTOR

Thom's work has been seen on stages across Canada and internationally. This is his fourth season as Artistic Director at PTE. He most recently directed Yvette Nolan's *Katharsis*, Hannah Moscovitch's *Post-Democracy* and Ismaila Alfa's *VOICE* (with Cherissa Richards) on the PTE stage. Other PTE directing credits include: *Happy Place* by Pamela Mala Sinha, *Ghost Light* by Shawn Wright, *Finding Wolastoq Voice* by Natalie Sappier, *The Third Colour* by Ian Ross and *By Grand Central Station* (A Heavy Bell production).



Darla Contois ASSOCIATE DIRECTOR

Darla Contois is a Cree-Salteaux performer and playwright. She graduated from the Centre for Indigenous Theatre's professional training program in 2014, attended David Smukler's National Voice Intensive and premiered her solo show *White Man's Indian* at @summerworksto 2017 in Toronto, where she was awarded the Emerging Artist Award. Darla has since been living and working professionally in her home territory treaty one; facilitating arts/storytelling workshops, mentoring Indigenous youth, acting (including *Happy Place* at PTE), writing and starting a family.



Andy Moro SET/COSTUME/LIGHTING/PROJECTION DESIGN

Andy Moro is an interdisciplinary artist and co-founder of ARTICLE 11 (A11) with Tara Beagan. Recent production/stage design includes *The (Post) Mistress* at Royal Manitoba Theatre Centre, *Ministry of Grace* for the Belfry Theatre (Victoria), *The Third Colour* for PTE, *Finding Wolastoq Voice* at Theatre New Brunswick/PTE, Dancers of Damelahamid's *Flicker*, *Minowin*, *Spirit & Tradition* (Vancouver) *Unnatural and Accidental Women* at National Arts Centre's Indigenous Theatre, many works with Kaha:wi Dance Theatre and most recently *SkyDancers* for Montreal's A'nó:wara Dance. A11's most recent theatrical work, *Deer Woman*, premiered at the Kia Mau festival, in Aotearoa and has met international acclaim – it will be presented in its digital form as part of PTE's 2021-22 season in April.

RARE EXQUISITE WORLDLY

WE'RE MAKING
EXOTIC TASTES
EASY TO FIND.



Distinctions
EXCEPTIONAL WINES & SPIRITS

Distinctions brings together some of the world's most exclusive wines and spirits. Whether you're a connoisseur or simply curious, you'll appreciate the care that goes into our hand-picked collection. Explore our rare selection and take home something priceless today.

GRANT PARK LIQUOR MART
1120 GRANT AVENUE



LIQUOR MART

@ f t LiquorMarts.ca | 18+ ENJOY RESPONSIBLY

Manage payments from one platform

**Telpay for Business
All-In-One Payment
Solution**

Telpay helps thousands of organizations across Canada save time and money from one simple and reliable payment platform.

telpay.ca

1-800-665-0302 | sales@telpay.ca



MEET THE ARTISTS



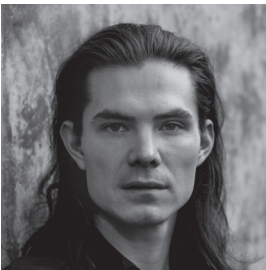
Brenda McLean COSTUME DESIGN

Brenda McLean is a Winnipeg theatre artist creating theatre on Treaty 1 Territory. She is excited to have the opportunity to collaborate with Andy Moro on the costume design for *The War Being Waged*. Brenda recently co-directed/co-choreographed *Love and Information* with her independent theatre company Theatre Incarnate and Company Link. Upcoming, she is developing a new work with Green Kids Inc. called *Bike and Circuses*, an outdoor, environmentally-minded family show for June 2022.



MJ Dandeneau COMPOSER/SOUND DESIGN

MJ Dandeneau is a French Métis and Anishinaabe kwe woman from the Red River Nation. Her mother's side comes from the Métis Red River Valley (île-à-la-Crosse) and her father's side comes from Penetanguishene, Treaty 61. She is an accomplished bassist, director, sound designer, composer and producer. She has worked and toured with various artists worldwide for the past 16 years. You can see MJ's work in MTC's production premiere of *Bitter Girls*, MTYP's *Charlie Brown's Double Bill*, *Torn Through Time*, *Tiny Treasure*, *Frozen River*, the PTE productions of *Katharsis*, *The War Being Waged*, Sarasvati's production of *Songidemwin* and the Cercle Molière premiere production of *La Liste*. Dandeneau is very excited and honoured to be part of this production, under the talented direction of Thomas Morgan Jones. Chi Miigwech, Maarsii.



Jera Wolfe CHOREOGRAPHER

Born in Toronto, Canada, Dora-winner Jera Wolfe is a choreographer and performer of Métis heritage and is an Associate Artist with Red Sky Performance. He has demonstrated an impressive repertoire of works presented by Canadian Stage, Fall For Dance North, Banff Centre for Arts and Creativity, Festival des arts de Saint-Sauveur, Danse Danse, and Jacob's Pillow. His recent works include *Arise* for Canada's National Ballet School, *Begin Again* for Winnipeg's Contemporary Dancers, and *Soul* for The National Ballet of Canada.

MEET THE ARTISTS



Karyn Kumhyr STAGE MANAGER

To be able to take the lessons, trauma, insights, difficulties, and challenges of this time forward feels full of interesting possibilities for change. I'm grateful to move out of this pandemic working with such an amazing team of creative artists, exploring social justice through this extraordinary new work! During this unique time period I have been able to stay connected through work with the Shaw Festival, PTE's virtual production of *Post-Democracy*, the film industry, and the Rainbow Harmony Project. I look forward to once again sharing theatre with a live audience.



Michael Duggan ASSISTANT STAGE MANAGER

Michael is a graduate of the University of Winnipeg, and worked previously for PTE on *Ghost Light*, *New Magic Valley Fun Town*, *Fly Me to the Moon* and *The Birds and the Bees*. Other recent credits include *Meet Me at Dawn* (Theatre by the River), *The Mountaintop*, *The Color Purple* (Royal Manitoba Theatre Centre), *The Winter's Tale* (Shakespeare in the Ruins & Théâtre Cercle Molière), *A Year with Frog and Toad* (Manitoba Theatre for Young People).



Aileen Audette MAKE-UP ARTIST

Happy to be back with PTE after working on their production last season of *VOICE*. Aileen has been a professional Make-Up Artist for 10+ years. A graduate of the U of W's Honours Theatre and Film, she completed Vancouver Film School's Make-Up and SFX program in 2018. She has lived in both Canada and Australia and does freelance make-up and special effects for film, photoshoots, and events. She has worked with Green Kids, Winnipeg Independent Theatre, MAC Cosmetics, and Schminken FX.

MEET THE PTE TEAM

PTE Administration:

Kathleen Day

BOX OFFICE REPRESENTATIVE

Deborah Gay-de Vries

FRONT-OF-HOUSE &

COVID COMPLIANCE MANAGER

Andrew Gehrs-Whyte

BOX OFFICE REPRESENTATIVE

Carman Johnston

DIRECTOR OF DEVELOPMENT

Thomas Morgan Jones

ARTISTIC DIRECTOR

Cherry Karpyshin

GENERAL MANAGER EMERITUS

Christine Kennedy

ACCOUNTANT

Jenna Khan

DIRECTOR OF COMMUNICATIONS

Lizabeth Kogan

ADMINISTRATION & BOX OFFICE MANAGER

Lisa Li

MANAGING DIRECTOR

Haanita Seval

DIRECTOR OF MARKETING

Emily's hair by Eve Rice

Production Staff:

Wayne Buss!

PRODUCTION MANAGER

Elana Honcharuk *

PROPS MASTER

Brenda McLean *

HEAD OF WARDROBE

Sean Neville

TECHNICAL DIRECTOR

Cari Simpson *

HEAD OF LIGHTS & SOUND

Steven Vande Vyvere *

HEAD CARPENTER

Production Crew:

Patrick Bellemare *

Eric Bossé *

Jenna Brown *

Denise Dela Cruz*

Ian Kirk *

Garrett Rusnak*

Andrew Sanger *

Evan Wohlgemut *

Sauna Jones *

SCENIC PAINTER

Claire Sparling *

WARDROBE (CUTTER)

Chris Black *

WARDROBE (FIRST HAND/BUILDER)

* operates under a contract with IATSE Local 63.

PTE's Playwrights Unit

Joseph Aragon, Sharon Bajer, Rick Chafe, Ginny Collins, Tricia Cooper, James Durham, Debbie Patterson, Ellen Peterson, and Ian Ross

PTE's Emerging Playwrights Unit

In association with Manitoba Association of Playwrights:

Wren Brian, Kristian Jordan, Jo MacDonald, Alissa Watson, and Liam Zarrillo

PTE BOARD OF DIRECTORS

Executive Members:

Melissa McAlister
PRESIDENT

Ryan Palmer
VICE-PRESIDENT

Ryan Segal
TREASURER

Jeff Palamar
SECRETARY

Jane Helbrecht
PAST-PRESIDENT

Jenny Wright
MEMBER-AT-LARGE

Directors:

Ainsley Cunningham

Shyamala Dakshinamurti

Sowmya Dakshinamurti

Rob Ferguson

Charles Huband

Sarah Luby

Gary Pachal

Tripat Pachu

David Thomas

Stirling Walkes

Foundation Trust:

Barb Gamey
CHAIR

Dave Angus

Larry Frostiak

Melissa McAlister

Ruth Simkin

The PTE Foundation Trust was established in 1987 to provide ongoing financial support to Prairie Theatre Exchange. The interest from the endowed funds is used each year to support new play development, as well as theatre education and outreach programs.

To donate an endowed gift to the foundation trust, and support the future of PTE, call Carman at 204-925-5263.

Prairie Theatre Exchange is a proud member of:

 **The Chamber**
The Winnipeg Chamber of Commerce

We acknowledge the support of the Canada Council for the Arts, which last year invested \$261.8 million to bring the arts to Canadians throughout the country.

Nous remercions le Conseil des arts du Canada de son soutien. L'an dernier, le Conseil a investi 261.8 millions de dollars pour mettre de l'art dans la vie des Canadiennes et des Canadiens de tout le pays.

Prairie Theatre Exchange gratefully acknowledges the ongoing and generous support of:



MANITOBA ARTS COUNCIL
CONSEIL DES ARTS DU MANITOBA



Canada Council
for the Arts

Conseil des Arts
du Canada



WINNIPEG
ARTS COUNCIL

SPONSORS & SUPPORTERS

RETURN TO THEATRE SPONSOR



CREATIVE CHAMPION



PRODUCTION SUPPORTERS



DIRECTING MENTORSHIP SPONSOR



EDUCATIONAL RESIDENCE SPONSOR



THE WAR BEING WAGED DIGITAL PRODUCTION SPONSOR



PTE PLAYWRIGHTS UNITS



VOLUNTEER CORPS SPONSOR



ACCESS SERVICES



EXCLUSIVE PRINT MEDIA SPONSOR



MEDIA SPONSORS



OFFICIAL PRINTER



OFFICIAL DESIGNER



WINE TASTING SPONSOR



PAYROLL SERVICES PROVIDED BY



ONGOING SUPPORT (AS OF OCT. 18, 2021)

Corporate Supporters

Corporate Donors

Avenue 4 Printers
Christianson Wealth Advisors
Diamond Gallery
Imago Theatre
Kenaston Wine Market
Lawton Partners
Mid West Packaging Limited
Royal Canadian Properties Ltd.
Seven Oaks Janitorial Services
Terracon Developments

Legacy Gifts

The Estate of Jean Fenwick
The Estate of Gloria Kroeker

In Memoriam & Celebratory Gifts

In memory of Laureen Bulman
Carman Johnston

A son's tribute to
Berdie & Irvin Cohen
Anonymous

In honour of Harvey Groleau
Sara Groleau

In honour of Mary Esther Griffith
Carly R. Beath
Donna Jenkyns
Carman Johnston

In honour of Keith Knox
Susan & Keith Knox

In honour of Matthew Lagacé
Claude, Suzanne &
Bernadette Lagacé

In honour of Tracey Loewen
Dave & Cindy Angus
Ms. Ainsley Cunningham
Ms. Lise Desrochers
Larry & Jane Frostiak
Barb & Brent Gamey
Deborah Gay-de Vries

Ms. Debbie Grenier
Jane Alexandra Helbrecht
Mr. Charles Huband
Carman Johnston
Ms. Cherry Karpyschin
Jenna Khan & Brad Chute
Bill & Shirley Loewen
Robert Metcalfe & Miriam Smith
Ms. Melissa McAlister
Ms. Brenda McLean
Mr. Jeffrey J. Palamar
Mr. Ryan Segal
Haanita Seval
Dr. Ruth Simkin
Ms. Christa Walkden

In memory of Joann MacMorran
Kendra Jones



Friends of Prairie Theatre Exchange was created to honour individual donors to PTE, whose ongoing support is vital to the health and vitality of this organization.

Angel Level: \$1,000 +

Robert & Ina Abra Family Fund -
The Winnipeg Foundation
Ms. Helen F. Bowen
Cathie & Brian Bowerman
Marilyn & Jim Burt
Mr. David Christianson
Joyce Dalmyn & Joe Masi
J. Dawson
Ms. Lise Desrochers

Ben & Shari Diamond
Mrs. Sharon Enns
Kevin & Pam Friesen
Barb & Brent Gamey
Susan J. Glass
& Arni Thorsteinson
Bruno Gossen
& Solange Chabannes
Kathleen Gough & Tim Wildman
Mr. Charles Huband
Cameron & Sally Inglis
Ms. Cherry Karpyschin
Ms. Zoë Kogan
Bill & Shirley Loewen
Carol McArton
Mrs. Leigh Murphy
Mr. Jeffrey J. Palamar
Mr. Ryan Palmer
Ronald & Monica Storozuk
Elane & Barry Talbot
Pierre Plourde & Krista Waring
Sonya & Scott Wright
Ms. Sandra A. Zinchuk
1 Anonymous Gift

Leader Level: \$500-\$999

David & Cynthia Angus
Doug & Diane Belcher
Mr. Jim Blanchard
Lawrie & Bea Cherniack
Art & Donna Chow
Jan & Kevin Coates
Agnes & John K. Collins
Ms. Ainsley Cunningham
Dr. Sowmya Sowmitri
Dakshinamurti
Mr. Michael Dunbar
Roberta Dyck
Ms. Helene Dyck
Ms. Charlotte Enns

Mr. Rob Ferguson
Miss Sylvia Flam
Judith & Peter Flynn
Kayla Gordon & Art Maister
Ms. Mintie Grienke
Darrell Hancock
& Joyce Bateman
Libby Hanna & Chris Wiebe
Jane Alexandra Helbrecht
John & Beth Helliar
Carman Johnston
Ross & Betty Jo Johnston
Nazim & Lorna Khan
Susan & Keith Knox
Ms. Robin Kogan
Ms. Theresa Kuzina
Lisa Li
Ms. Linda Lindsay
Eric & Judy Lister
Ms. Tracey R. Loewen
Ms. Debbie MacKenzie
Ms. Melissa McAlister
Thomas Morgan Jones
& Josie Marasco
Teresa Moysey
& Bruce Faurshou
Mrs. Angela Mueller
Mr. Heinz Nolting
Cam & Carole Osler
Gary Pachal
David & Lynn Pate
Jo-Anne & Harvey Peltz
Michael Pendergast
Ms. Iris Reimer
Margaret Scott
Haanita Seval
Dr. Ruth Simkin
Ms. Cathy Skene
Mr. J. Brenton Stearns
Mrs. Marcia Anne Tait
Karen Tjaden & Rob McClement
Carol & Hugo Unruh
Ms. Christa Walkden

Stirling Walkes
Bruce Webb
Teresa & Les Wiens
Dennis & Gustine Wilton

Partner Level – \$375-\$499

Dianne Cooper
Ms. Shyamala Dakshinamurti
Mr. James Duval
Brian Everton
Dr. Michelle Georgi
Ms. Susan Goldie
& Mr. Kingsley Bowles
Mr. Jason Gren
Mrs. & Mr. Diane
& Robert Haglund
Ms. Pat Hardy & Tim Schouten
Mrs. Anne Marie Klassen
Marvin & Evelyn Koop
Emery & Vlasta Lajtai
Don Lawrence
Mrs. Elizabeth McGarry
Campbell & Lorraine McIntyre
Mr. Gerald Minuk
Mrs. Faith Mychasiw
Mr. Brad Nance
Mr. Tom Nitsch
Judith Reichert
Levi & Tena Reimer
Mrs. Linda Rhodes
Geri & Peter Spencer
Mr. Malcolm Symonds
Mr. Neil Taylor
1 Anonymous Gift

Benefactor Level – \$225-\$374

Mr. & Mrs. Ron Anthony
Fred & Grace Aoki
Helen & Julius Arkos
Mr. Steve Ash-Hamon
Ms. Judy Bartlett
Brenda Batzel
Jim & Rose Beaulieu

Ms. Marie Berry
Ronald & Marnie Bolland
David & Pam Bolton
Ms. Judy Bourcier
Kris & Ruth Breckman
Donna Byrne
Fran Coulter & Barry Rowley
Barbara & Brian Crow
Ms. Jo-Ann Cumming
Werner & Judy Danchura
Mr. Doug DeGraff
June & Tom Denton
Mr. Terry Woods
Mr. & Mrs. Peter Douglas
Mrs. Francine Douville
Ron & Cathy Draho
Mrs. Cheryl Durnin
Debora & Tim Durnin-Richards
Peter Engbrecht
Ms. Annette Fast
Linda Ferguson
The Late Mrs. Jo-Anne Findlay
M. Fliegel
Ghislaine Giroux
& Ken Decruynaere
Ms. Debbie Grenier
Ms. Ava Gruener
Ms. Vera Hamson
Doug & Sylvia Hannah
Ms. Lydia Heshka
Lenore & John Hodge
Mrs. Jean Hyrich
Ms. Nadia Iancu
Ms. Susan Kasian
Walter & Marian Kremers
Ms. Elisabeth Kunkel
Mr. & Ms. Randie & Jan Kushnier
M. Kirsti Anneli Kuuskivi
Ken & Charlotte Lazaruk
Dr. Christopher Leo
Mr. Bill Leslie
Ms. Sarah V. Luby

Sharon M. Macdonald
Mr. & Mrs. Doug Magnusson
Mrs. Jackie Markstrom
John & Naomi McLeod
Ms. Cheryl McNabb Davis
Penny & Bob Miller
Barbara & Grant Nicolson
Ms. Marlene E. Pauls Laucht
Marym & Izzy Peltz Fund –
Jewish Foundation
Ms. Elaine Penner
Mr. Brian Perchaluk
Ms. Melissa Pilon
Joanne & Robert Poapst
Bill & Carol Potter
Ms. Beth Proven
Daryl & Sheila Reid
Mr. & Ms. Joe & Karn Sandy
Mr. Ryan Segal
William & Claudia Senkiw
Muriel Smith
Mr. & Mrs. Kevin
& Gladys Stewart
Bob & Susan Taylor
Mr. Ross Taylor
Ruby Tekauz
Brian & Nancy Testar
James & Louise Townsend
Steve & Robin Vande Vyvere
Donald & Florence Whitmore
Mr. Armin Wiebe
Mr. & Mrs. Alfred Wiebe
Mr. Steve Yurkiw
Dori & Rick Zerbe-Cornelsen
9 Anonymous Gifts

Patron Level – \$125-\$224

Karin Archibald
& Marcel Carignan
Mr. Zaz Bajon
& Ms. Patricia Hunter
Dave Bergen
Ms. Diane Bewell

Mrs. Barbara Bilodeau-Shumeley
Marjorie Blankstein
Mrs. Anne Bolton
Mr. Rick Borchert
Ms. Barbara Brandt
Ms. Merrill E. Brown
Ms. Carol R. Budnick
Ms. Alyson Bulloch
Mrs. Catherine Burke
Mr. Robert Campbell
Dr. Jaydeep Chipalkatti
Mr. Douglas Coburn
Joyce Cooper
Gerda & Norman Coull
Ted & Lacona Cunningham
Ms. Joyce Devrieze
Ms. Carla Divinsky
Ian & Leslie Donnelly
Ms. Ann Downey
Mrs. Linda Karen Duncan
Gayle Fischer
Ms. Margaret Flewin
Gitta Fricke
Terry & Carol Galloway
George & Carol Gamby
Ms. Judi Gibbs
Dr. Brian Gillespie
Mrs. Elizabeth Gossen
Ms. Beverly Grace
Carla & Mike Gray
Mrs. Jo Anne Hailley
Ms. Barbara Hallson
Doug & Jan Halmarson
Ms. Shirley Ann Hampton
Corie Haslbeck
Elizabeth Heimbecker
Mr. Norm Hiebert
Shirley & Michael Hill
Darlene Hnatyshyn
Ms. Linda Hogue
Mrs. Elsie Hughes
Gerry Irwin-Kilfoyle

Barb Janes & Bev Peters
Ms. Danya Jaworsky
Karen & Lucien Jean
Janet Johnson
Mrs. Beverley Kawchuk
Mrs. Ursula Kelemen
Ms. Judith Kendle
Ms. Doreen Kerr
Elizabeth Kogan
Sonia Kowalewich
Ms. Cathy A. Kozak
W. Harold & Lorna Law
Kathy & Saul Leibl
John & Roberta Lewis
Marion Lewis
Mr. Allen MacInnis
Barbara Main
Mr. Jim Mair
Mrs. Clare McArton
Ms. Mary McCormick
Kathy Melnyk
Robert Metcalfe & Miriam Smith
Ms. Mary Lou Milhausen
Ms. Jocelyn Millard
Howard Miller & Yvonne Peters
Mrs. Jackie Morrisette
Ms. Meagan Mutchmor
Ms. Lisa Neron
Ms. Janet M. Nixdorf
Ms. Doris Orchyk
Michelle Smth
Mr. Jean-Pierre Parenty
Ken & Maureen Plews
Dr. Bill Pope
& Dr. Elizabeth Tippet-Pope
Nadia Radi
Ms. Trish Rawsthorne
Bill & Pat Reid
Mr. & Mrs. John Salmi
Jon and Marilyn Seguire
Lynn & Bill Shead
Shayna & Merrill Shulman

Terry & Sharon Silcox
Drs. Meera & Sach Sinha
Mrs. Margaret Stevens
Tom & Shirley Strutt
Mrs. Peggy Sutton
Mr. Eugene Szach
Dr. James Tam
Ms. Liliane Tremblay
Mrs. Brenda Trevenen
Mr. Brian Van de Mosselaer
Erwin & Val Warkentin
Mr. Gerald Warkentin
Faye Warren
Allan & Mavis Whicker
Dr. Debra Wiens
Ms. Nicole Zajac
9 Anonymous Gifts

Supporter Level – \$85-\$124

Philip Adams
Mrs. Betty Jane Arnason
Marilyn Begg
Dr. & Mrs. Thor Choptiany
Anna & Bob Coulter
Robert & Alison Darling
Gordon Elvers
Mrs. Carol Engstrom
Ms. D. E. Frederickson
Mrs. Christine Freeman
Mrs. Maxine Gilman
Ms. Christine Greaves
Sara Gorleau
Margorie & Kenneth Grower
Don Hardy
Mrs. Kathy Harrison
Ms. Linda Hiebert
Ms. Nicole Hohner
Catherine Hunter
Ms. Donna Jenkyns
Chris Johnson & Barb Donovan
Janis Kaminsky

Ms. Valerie Kellberg
Jenna Khan & Brad Chute
Claude, Suzanne
& Bernadette Lagacé
Dr. Celine Latulipe
John & Roberta Lewis
Jennifer Lidstone
MacDonald/Cageorge Fund -
The Winnipeg Foundation
Allison MacHutchon
Mr. Orville J. Malcomson
John & Carolynne McLure Fund -
The Winnipeg Foundation
Mrs. Rossana McCormack
Doug McKeag
Mrs. Katherine Elizabeth
McLennan
Linda Meckling
Rev. L. Miller
Ms. Anne Morton
Dale M. Napper
Mrs. Carol Northam
Chris & Linda Papageorge
Ms. Sonjia Pasiechnik
Mr. Rob Patterson
Mr. Ernie Peters
Dr. L. Blair Philpott
Mr. & Mrs. J. Prendergast
Debra Radi
Rudy & Audrey Ramchandar
Mary Reid
Mrs. Roslyn Roberts
Ms. Betty Rogers
Rita Romsa-Ross
Mrs. Valerie Ross
Ms. Elspeth Sangster
Mrs. Janet Elizabeth Scarth
Mrs. Irene Semaniuk
Mrs. Judy Shiffman
Ms. Iris Shrimpton
Barbara & Dennis Sigurdson

Ms. Loretta Steinbart
Ms. Alison Vargo
Darcie Wadelius
Hilda Wagstaffe
Ms. Catherine Waldie
Ms. Elaine Walker
D. Wehner
Ms. Brenlee Werner
Mrs. Melanie Whyte
Monique & Scott Wichenko
9 Anonymous Gifts

Associate Level – \$60-\$85

H. D. Aldwyn
Ms. Kathleen Allen
Ms. Jean Altemeyer
Ms. Wendy Barber
Ms. Bonnie Berry
Ms. Ingrid A. Bolbecher
Dennis & Amy Butcher
Ms. Ruth Campbell
Ms. Louise Chernetz
Mrs. Wilna Dehls
Mr. Mrs. Fred
& Christine Eldridge
Mrs. Edna Erickson
Mary & Craig Fardoe
Suzanne Findlay
Ms. Moni Fricke
Ms. Diane Henkel
Tim & Elizabeth Higgins
Ms. Ardith Johnston
Dr. Kathi A. Kinew
Ms. Michelle Lagassé
Ms. Shirley M. Lord
Ms. Joan MacDonald
Ms. Melissa Novecosky
Mrs. Denise Penley
Ms. Nettie Peters
Rodney & Darlene Petersen
Ms. Pat Robertson

Mrs. Patricia Rothney
Ms. Laura Theresa Sevenhuysen
Louise Sloane
Mr. Audrey Smith
Ms. Louise Smith
Mrs. Bonnie Ellen Thiessen
Mrs. Judith Valenzuela
Mrs. Antoinette Wildman
Diane Zack
Ms. Fran H. Zastre
Nikki Zloty
3 Anonymous Gifts

Member Level – \$30-\$59

Ms. Hollie Irene Andrew
Mrs. Carole Arenson
Brenda L. Augusta
Peggy Barker
Mrs. Frederica Borys
Barbara Bowen
Marilyn Boyd
Mrs. Enid Butler
L. K. Butler
Mr. Liam Caines
Wanda Cannon
Ms. Catherine Clement
Ms. Judy Davis
T. Dercola
Ms. Sylvia Fisher
Mrs. Heather Gillman
Ms. Alyson Haiart
Helen Halpin
Ann Hodges
Mrs. Carol Hodges
Richard & Karen Howell
Dolores Jardine
Ms. Lynn Kammerlock
Mr. & Mrs. Walter Kampen
Christine Kennedy
& Michael Sharpe
Evan R. Klassen
Kimberley Kwiatkowski
Janet La France & Chris Black

A. Page Lewis
Kevin & Diane Longfield
Ms. Sharon R. Love
Mrs. Linda MacNair
Ms. Lynne Carol Martin
Mrs. Laurie Massaro
Evan & Dustin Maydaniuk
Pamela A. McKechnie
Ms. Brenda McLean
Jackie & Glenn Olinkin
Ms. Bev J Plett
Toni Reimer
Ms. Darlene Ronald
Lynne Sanderson
Mrs. Vicky Sharman-Finlayson
Edward Shinewald
Ms. Diane Silverthorne
Ms. Maureen L Simpson
Harry A Skene
Mr. Robert W. Stalker
Chris & Linda Sunde
Hon. Pamela Thomson
Donna & Wayne Tremblay
Mr. Chris Turyk
Cory Wojcik
Ms. Elizabeth Woods
Lawrence Zwer
8 Anonymous Gifts

Donor level – up to 30

Ms. Sara Ann Arenson
H. Diane Breu
Wren Brian
Dr. Janne Cleveland
Judith Doctoroff
Thomas H. J. Donnelly
Esther Dostrovsky
Anik Dowsett
Ms. Mary K. Edgar
David Firman & Gail Perry
Arianne Fuellos
Mrs. Melanie Gaudreau

Deborah Gay-de Vries
Ms. Andrea Geary
Ms. Deborah Gray
Ms. Margaret Hardman
Helmut & Helen Hesse
Ms. Victoria Hill
Ms. Mandy Hogaboam
Jennifer Inglis
Kendra Jones
Dr. & Mrs. Arnold Kapitz
Ms. Alison Kennedy
Gail Kluk
Melissa Langdon
Ms. Jean McClure
Mr. Duncan M. McGregor
Sandra Ann Medd
Glen Miller
Mrs. Karen Nast-Kolb
Miss Laura Irene Olafson
Claire Pankiw
Mr. Daniel Piché
Mrs. Carolyn Porhownik
Mr. Kerry Renaud
Jenna Rodgers
Joy Ross-Jones
Ms. Heather Russell-Smith
Bruce & Celia Sarbit
Mr. Kurt A. Schwarz
Jane Srivastava
Kevin Steiner
Conrad Sweatman
Mr. Daniel Thau-Eleff
Alex Todd
Amanda Toews
Murray Wm. Vint
Carl L. von Baeyer
Penny Webber
Susan Wiste
Ms. Tanja Woloshen
6 Anonymous Gifts

“Because sharing stories changes the way we see the world, ourselves and each other.”

Thomas Morgan Jones,
Prairie Theatre Exchange



Join together with other caring Winnipeggers.
Give to your favourite **Cause** through The Foundation
and make Winnipeg better by helping local charities.

[FindyourBeCause.org](https://www.findyourbecause.org)

f t YouTube in @ #FindyourBeCause | 204.944.9474

THE
WINNIPEG
FOUNDATION **100** 

Your Community Foundation
since 1921. For Good. Forever.



Building creative communities and bright futures

Together, we can do more for
Canadians, for each other and
for the communities we love.



Stronger
Communities
Together™

Canada Life and design are trademarks of The Canada Life Assurance Company. Stronger Communities Together is a trademark of The Great-West Life Assurance Company.