

BMW X3



Sheer
Driving Pleasure

www.bmw.com



THE BMW X3.

BMW EFFICIENT DYNAMICS.
LESS EMISSIONS. MORE DRIVING PLEASURE.

THE NEXT
100 YEARS





VELKOMMEN TIL UDSTYRSSEKTIONEN.

De resterende sider i kataloget er en oversigt over det ekstra- og standardudstyr, bilen leveres med i Tyskland. På de allersidste sider i kataloget finder du en udstyrsrliste, som er gældende specifikt for det danske marked.

Med venlig hilsen
BMW Danmark A/S



In 2016 the BMW brand will be celebrating its 100th anniversary. Find out more at www.next100.bmw

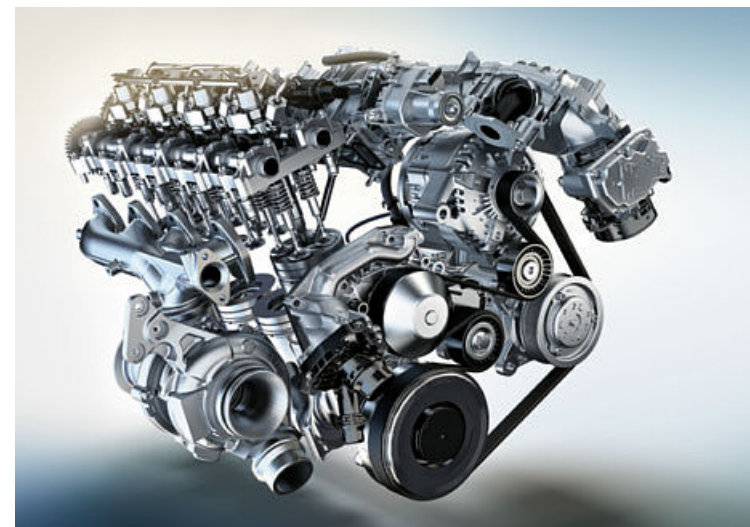


WANT TO DISCOVER MORE?



Discover the BMW X3, online and interactively, for instance in our video and image galleries. Simply download the BMW catalogues app for your device and select the relevant model.

Internet use, depending on your mobile contract, may incur costs.



THE BMW X3. VERSATILITY WITHOUT LIMITS.

THE MODEL SHOWN.

- 04 BMW X3 xDRIVE20d WITH THE MODEL xLINE:** BMW TwinPower Turbo four-cylinder diesel engine; 140kW (190hp); 19" light alloy wheels Y-spoke 608; exterior in Mineral White metallic; seats in Mocha Nevada leather with appliques and imprints; high-gloss Finesline Anthracite interior trim.

Further information on fuel consumption and CO₂ emissions can be found on pages 48 | 49 or consult your BMW partner.

INNOVATION AND TECHNOLOGY.

- 18 BMW TWIN POWER TURBO ENGINES:** The heart of BMW EfficientDynamics.
- 20 BMW EFFICIENT DYNAMICS:** Making light work of lower fuel consumption.
- 22 BMW CONNECTED DRIVE:** Services & Apps and driver assistance.
- 24 CHASSIS:** Innovative systems for more driving pleasure.
- 26 SAFETY:** Technology at the highest level.

INDIVIDUALITY AND VERSATILITY.

- 30 EQUIPMENT:** BMW models, equipment highlights, wheels and tyres and Original BMW Accessories.
- 44 COLOURS:** A world of colour for the exterior and interior.
- 48 TECHNICAL DATA:** Weight, engine, transmission, performance, fuel consumption, wheels and dimensions.
- 50 BMW SERVICE:** BMW Service, BMW Financial Services and BMW Experience.

LIVE LIFE TO THE FULLEST!

The BMW X3 – built for both the small and large challenges that every day brings. Whether it's on the way to work, or at the weekend. With family or for some quality time alone. And with precisely the right mixture of sporting character, appealing design, impressive efficiency and clever functions, every adventure is child's play. Discover your urge to explore – and act on it: with the BMW X3.







**SHORT SPRINT.
LONG
RANGE.**

When the BMW X3 accelerates, it doesn't just inspire its driver. It also captivates anyone who sees it. Its sporting character is revealed in an extremely dynamic driving experience with simultaneously impressive efficiency – and fascinating design that emphasises the athletic character of the BMW X3.





You decide where the road goes: the BMW X3 knows how to assert itself where there is no fixed route. The four-wheel drive BMW xDrive system ensures greater traction and safety on every surface. This makes every journey an unforgettable experience – no matter how far from the city you venture.

**NOT TOO PRETTY
TO PLAY DIRTY.**

**THERE'S EVEN MORE SPACE
IN THE GLOVEBOX.**



There's no need to think too hard about what to take with you – take everything. The BMW X3 is always perfectly prepared with a generous interior featuring a host of storage possibilities and, just like the luggage compartment (550–1600 litres), is equal to every challenge. The BMW X3 also offers another large-scale attraction: the Panorama glass roof provides a perfect view of everything your day has in store.



BRING ON THE NEXT ADVENTURE.

What is the best thing about arriving? Being able to drive off again – in the BMW X3. Its comfort, its cabin space, its agility and its sporty design answer every challenge. Experience versatility at its most compelling – and look forward to adventures every day with the BMW X3.



INNOVATION AND TECHNOLOGY.

BMW TWIN POWER TURBO ENGINES: The heart of BMW EfficientDynamics.

BMW EFFICIENT DYNAMICS: Making light work of lower fuel consumption.

BMW CONNECTED DRIVE: Services & Apps and driver assistance.

CHASSIS: Innovative systems for more driving pleasure.

SAFETY: Technology at the highest level.

BMW TwinPower Turbo engines. At the heart of BMW EfficientDynamics.

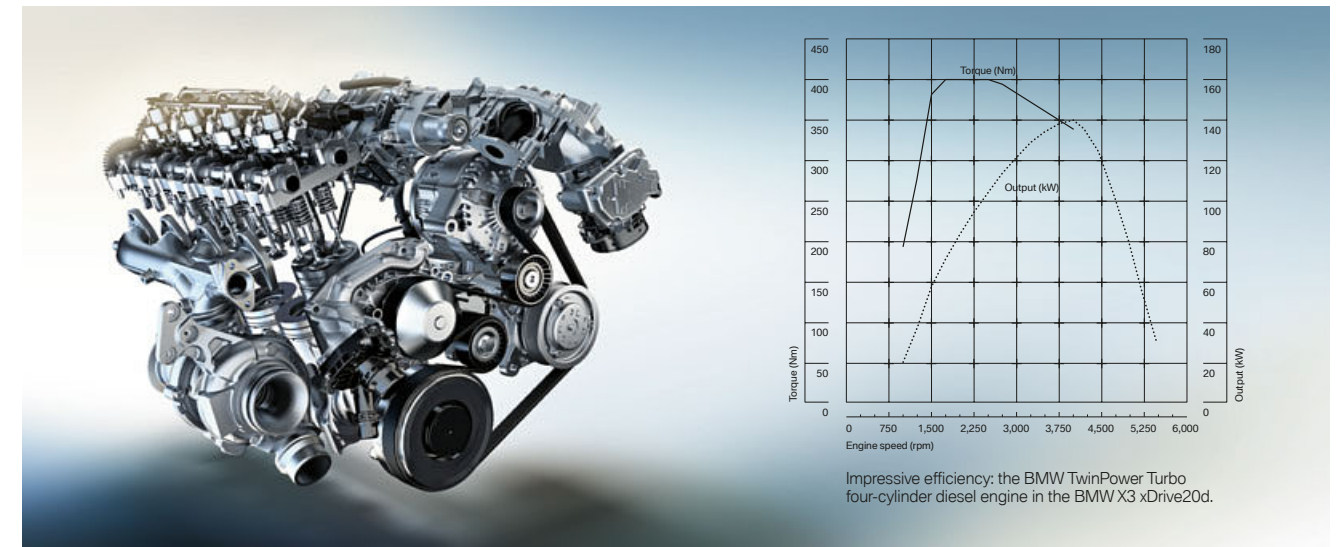
Thanks to BMW TwinPower Turbo technology, the innovative new generation of BMW petrol and diesel engines from the BMW EfficientDynamics engine range can deliver an agile performance and excellent responsiveness even at low engine speeds, all while being exceptionally fuel efficient and low in emissions. Increased efficiency and optimal dynamics guarantee noticeably more intense driving pleasure.



NEW-GENERATION BMW TWIN POWER TURBO FOUR-CYLINDER DIESEL ENGINES.

The **BMW X3 xDrive20d** and the **BMW X3 sDrive18d** increase their impressive output to 140kW (190hp)¹ and 110kW (150hp)¹ respectively. Their combination of CommonRail direct injection and a turbocharger with variable turbine geometry, meanwhile, ensures plenty of torque. At the same time, the diesel engine's fuel consumption remains low, which is supported by the optional **eight-speed Steptronic transmission**. This additionally provides higher shifting and driving comfort through finely tuned gearing and near-seamless gear changes. Along with the increased fuel economy and comfort, the system also noticeably enhances dynamics.

BMW EFFICIENT DYNAMICS.
LESS EMISSIONS. MORE DRIVING PLEASURE.



BMW X3 xDrive35d.

- BMW TwinPower Turbo inline six-cylinder diesel engine with 230kW (313hp) and 630Nm of torque
- Acceleration 0–100km/h: 5.3s; top speed: 245km/h
- Combined fuel consumption: 6.0l/100km¹
- CO₂ emissions: 157g/km¹

BMW X3 xDrive35i.

- BMW TwinPower Turbo inline six-cylinder petrol engine with 225kW (306hp) and 400Nm of torque
- Acceleration 0–100km/h: 5.6s; top speed: 245km/h
- Combined fuel consumption: 8.3l/100km¹
- CO₂ emissions: 193g/km¹

BMW X3 xDrive30d.

- BMW TwinPower Turbo inline six-cylinder diesel engine with 190kW (258hp) and 560Nm of torque
- Acceleration 0–100km/h: 5.9s; top speed: 232km/h
- Combined fuel consumption: 5.9–6.1 l/100 km¹
- CO₂ emissions: 156–159 g/km¹

BMW X3 xDrive28i.

- BMW TwinPower Turbo four-cylinder petrol engine with 180kW (245hp) and 350Nm of torque
- Acceleration 0–100km/h: 6.5s; top speed: 230km/h
- Combined fuel consumption: 7.3–7.4 l/100 km¹
- CO₂ emissions: 169–172 g/km¹

BMW X3 xDrive20d.

- BMW TwinPower Turbo four-cylinder diesel engine with 140kW (190hp) and 400Nm of torque
- Acceleration 0–100km/h: 8.1s; top speed: 210km/h
- Combined fuel consumption: 5.1–5.5² [4.9–5.3²] l/100 km¹
- CO₂ emissions: 135–145² [129–139²] g/km¹

BMW X3 xDrive20i.

- BMW TwinPower Turbo four-cylinder petrol engine with 135kW (184hp) and 270Nm of torque
- Acceleration 0–100 km/h: 8.2 s; top speed: 210 km/h
- Combined fuel consumption: 6.9–7.3² l/100 km¹
- CO₂ emissions: 161–171² g/km¹

BMW X3 sDrive18d.

- BMW TwinPower Turbo four-cylinder diesel engine with 110kW (150hp) and 360Nm of torque
- Acceleration 0–100km/h: 9.5s; top speed: 195km/h
- Combined fuel consumption: 4.7–5.1² [4.7–5.1²] l/100 km¹
- CO₂ emissions: 123–133² [125–135²] g/km¹

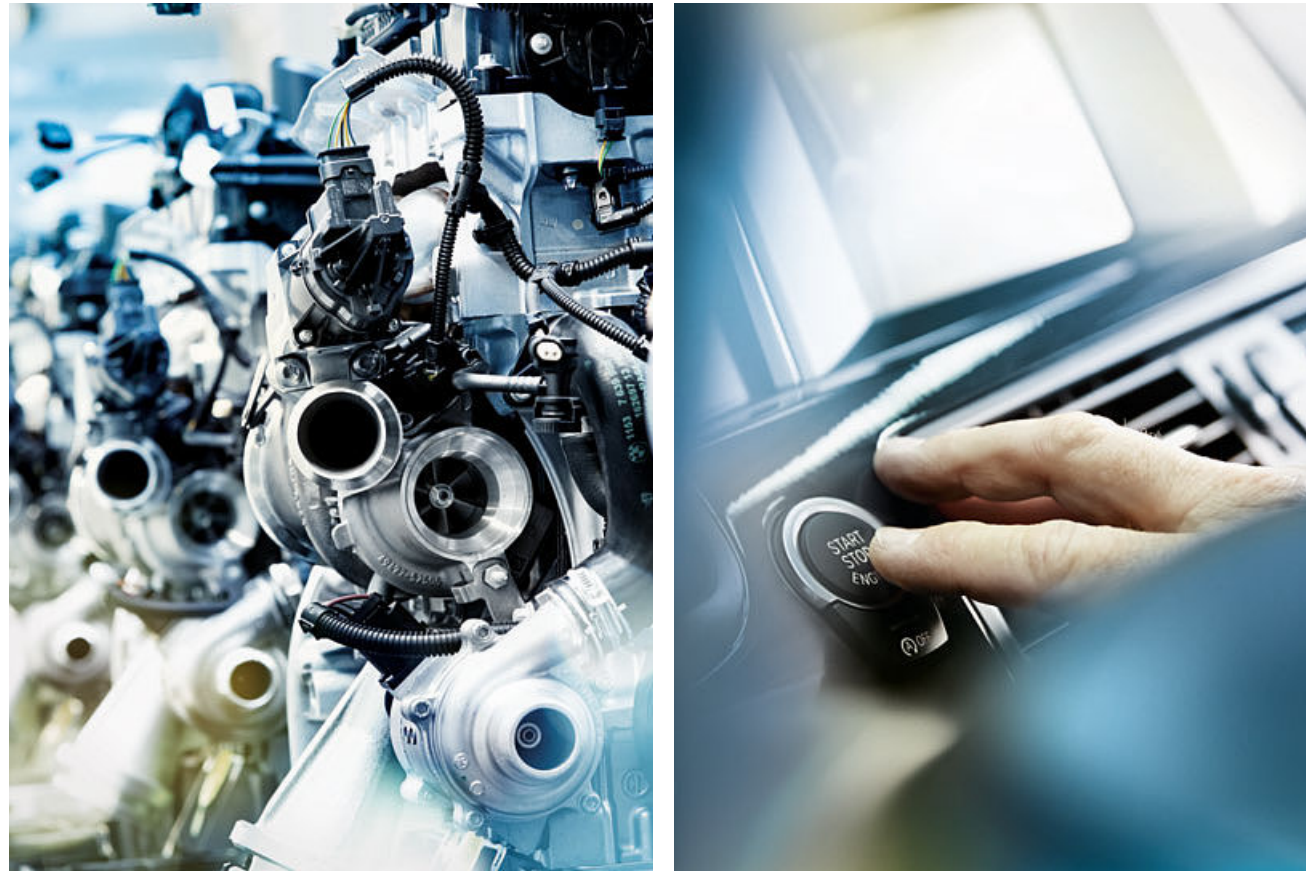
¹ Fuel consumption and CO₂ emission are dependent on wheel and tyre size (higher figures refer to models with optional wheels). Further information on fuel consumption and CO₂ emissions can be found on pages 48 | 49 or consult your BMW partner.
² Lowest value determined with cost option 2AM 17" light alloy wheels Streamline 306.

Information on performance, fuel consumption and CO₂ emissions applies to vehicles with standard transmission. Values in [] refer to vehicles with optional eight-speed Steptronic transmission.

BMW EfficientDynamics

Less emissions. More driving pleasure.

Whether the goal is maximum performance or minimum fuel consumption – for BMW, the focus is always on delivering quintessential BMW driving pleasure. BMW EfficientDynamics is the strategy developed by BMW to minimise fuel consumption and CO₂ emissions while simultaneously increasing dynamics and driving pleasure. It is a comprehensive technology package that encompasses the engine, energy management, lightweight construction and aerodynamics – and it comes with every BMW.



OUTSTANDING: BMW EFFICIENT LIGHTWEIGHT

The structure of the BMW X3 uses a wealth of high-tech materials. They include lightweight aluminium in the front and the chassis, high-strength steel in the body and ultra-modern plastics and magnesium. This intelligent lightweight construction reduces the weight of the components and creates exceptional body rigidity for enhanced passive safety for the driver and passengers. It also improves driving dynamics thanks to balanced weight distribution between the front and rear axles.



DRIVETRAIN.

The BMW TwinPower Turbo technology concept features in all **petrol engines**. Innovative turbocharging technology in combination with High Precision Injection and Valvetronic fully variable valve control including Double-VANOS increases output for more spontaneous responses, even at lower engine speeds, and, at the same time, reduced fuel consumption.

BMW TwinPower Turbo technology in the **diesel engines** combines the very latest fuel injection technology for increased efficiency and fully variable turbine geometry for higher dynamics. They are all built in lightweight aluminium and each is equipped with a maintenance-free particulate filter.

OVERALL CONCEPT.

Precisely coordinated **aerodynamics measures** optimise the drag coefficient which, in turn, has a positive effect on overall efficiency. Features that contribute to this include panelling that creates a flat underbody and aerodynamically optimised wing mirrors.

ENERGY MANAGEMENT.

ECO PRO mode can lead to fuel savings of up to 20%, depending on individual driving behaviour. Another 5% can be gained through additional functions such as “Coasting” (only with eight-speed Steptronic transmission), the Route-Ahead Assistant (only Navigation System Professional) and ECO PRO Route (only with Navigation System Professional or Business).

The **Automatic Start/Stop function** switches the engine off when the vehicle comes to a temporary standstill (e.g. at traffic lights or in a traffic jam) to reduce overall fuel consumption. When the driver presses on the clutch (manual transmission) or takes their foot off the brake (Steptronic), the engine automatically starts up again in a fraction of a second.

The **Optimum Shift Indicator** recommends the most efficient gear for every driving situation. The resulting well-timed shifts lead to noticeably lower fuel consumption, particularly in urban and inter-urban traffic. In all BMW models with a manual transmission, the optimum gear is indicated by a display in the cockpit.

Brake Energy Regeneration uses the energy that is created when the driver eases off the accelerator or brakes. Thus, the alternator is used efficiently, and kinetic energy that until now went unused can now be turned into electric energy to charge the battery. Fuel consumption is reduced and performance increases.

Unlike conventional hydraulic systems, **Electric Power Steering** enables precise steering at any speed. In addition, it reduces fuel consumption as its electric motor – in contrast to a hydraulic pump – only uses energy when steering support is actually required.

BMW ConnectedDrive

So connected, you're free.

Our world is becoming more closely connected every day. And for BMW drivers it goes without saying that they can request information, communicate via telephone or email and always be up to date – all while they're on the go. The BMW ConnectedDrive¹ concept encompasses all the services and innovative technologies that link BMW vehicles and their passengers to the outside world and surrounding traffic.



The equipment option **ConnectedDrive Services*** forms the basis for BMW ConnectedDrive functions, which provide the driver with a wide range of information, entertainment and service features while on the road.

These include BMW Online, which provides access to current, location-based information such as weather and news, an online search powered by Google™ as well as office functions. In addition, an individual range of services such as fuel price information, parking information, as well as travel and hotel guides may be set up via the applications menu.

This also includes convenient, secure and unlimited access to selected smartphone apps. ConnectedDrive Services also provides access to the **BMW ConnectedDrive Store**, in which services such as Real Time Traffic Information, Remote Services, Online Entertainment and Concierge Services can easily be ordered and extended to suit the user's individual requirements. The equipment option ConnectedDrive Services offers all this and more, making every trip in a BMW a real experience.

BMW ConnectedDrive, with its intelligent services and assistance systems, is always ready with all the right equipment. **BMW ConnectedDrive Services & Apps** offer more freedom by providing versatile connections between the driver, vehicle and outside world. **BMW ConnectedDrive Driver Assistance systems** make driving a BMW safer and more comfortable. And intelligent systems make life easy for the driver and minimise the dangers of traffic.



The **Driving Assistant Plus** option (only with Steptronic transmission) includes Approach Warning and Lane Departure Warning as well as Active Cruise Control with the Stop&Go function. In this way, Driving Assistant Plus enhances driving safety and comfort on motorways.



The **Parking Assistant** makes parallel parking easier. When travelling at speeds below 35km/h, the system measures any parking gaps the vehicle passes. When a suitable space has been found, the Parking Assistant will do the steering, while the driver continues to operate the accelerator, gears and brakes.



The radar-based **Lane Change Warning** detects vehicles in the blind spot as well as fast oncoming cars in the neighbouring lane during a planned lane change (activated indicator) if the car has reached the speed required to activate the system, both through a vibration in the steering wheel as well as visually through a blinking warning symbol on an exterior mirror.

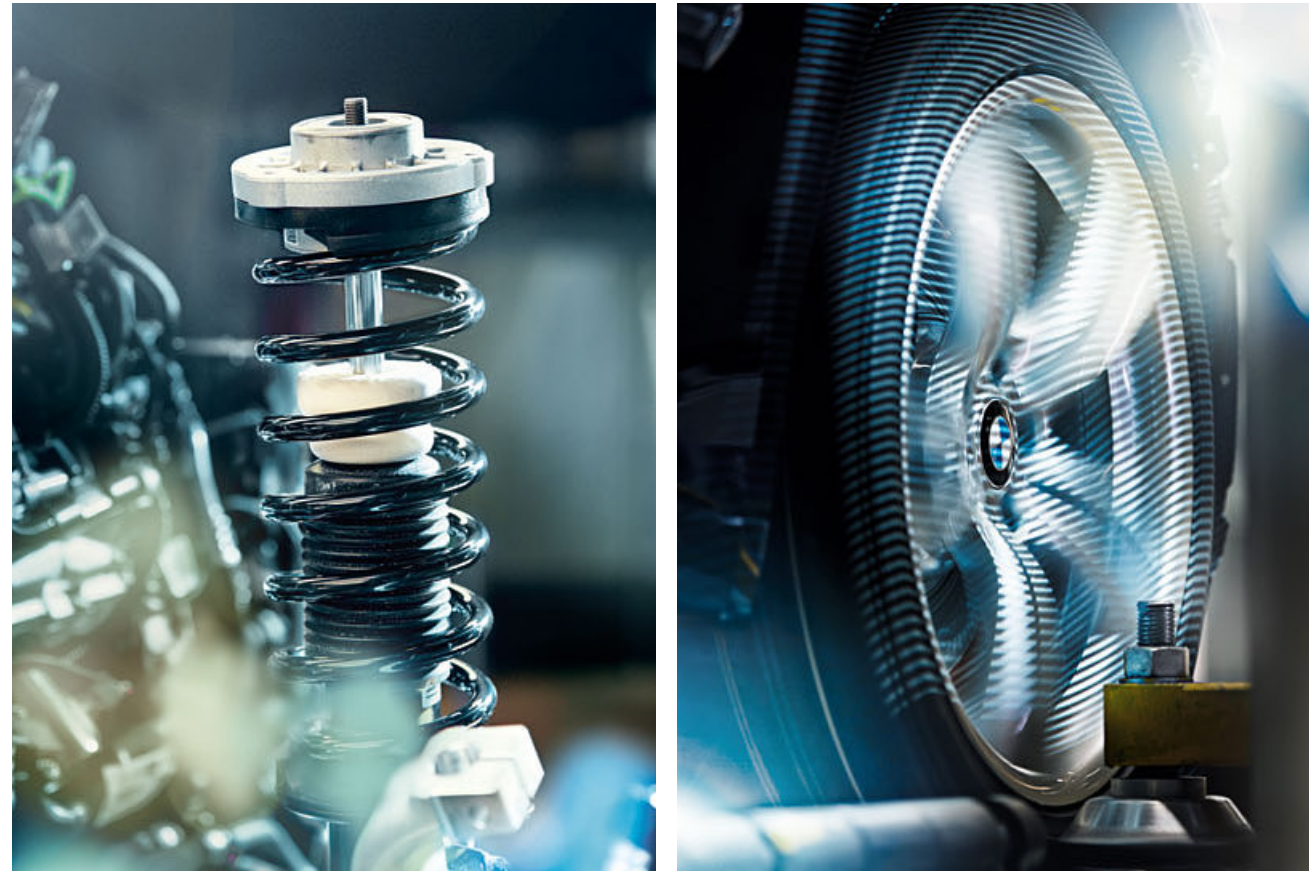
* May not be available in all countries. Please consult your BMW partner.
¹ For further information on BMW ConnectedDrive, please visit www.bmw.com/ConnectedDrive

Image shows features that are only available for the German market.

Chassis.

A solid foundation for superior driving dynamics.

A wide range of innovative technology in the BMW X3 is there to make sure that you thoroughly enjoy every journey. Many systems are intelligently networked, allowing you to experience maximum driving pleasure in the utmost safety.



THE INTELLIGENT BMW ALL-WHEEL DRIVE SYSTEM xDRIVE.

The intelligent BMW xDrive all-wheel drive system adapts perfectly to even the most challenging road surface conditions, ensuring optimal traction at all times. xDrive and Dynamic Stability Control (DSC) ensure that the BMW remains safe and stable. Controlled via the DSC sensor system, xDrive flexibly and quickly distributes drive power between the axles in order to prevent oversteer or understeer on bends, thereby ensuring outstanding directional stability. Moreover, it guarantees a rapid, safe acceleration even on slippery or steep stretches. In critical road conditions, the DSC doesn't need to intervene as much. BMW xDrive thus combines all the advantages of an all-wheel drive system – traction, directional stability and driving safety – with classic BMW agility.



The optional **Dynamic Damper Control** allows the driver to adapt the shock absorber characteristics to suit the driving situation, thus enhancing ride comfort and driving dynamics. In addition to the standard COMFORT setting, there are also SPORT and SPORT+ modes for even more sporty driving enjoyment.

The optional **Variable sport steering** with Servotronic creates a direct and agile steering response and ensures less physical effort is required to turn the wheel. It reacts to the angle of the steering wheel with varying steering ratios. This improves handling when driving more dynamically and reduces the effort needed to steer when parking and turning.

The optional **BMW Performance Control** intervenes through engine control and targeted braking in corners, so more power is distributed to the outer wheels and less to the inner wheels. This means that the vehicle practically turns itself, thus increasing driving safety and comfort.

Driving Experience Control, fitted as standard, lets the driver choose between the standard COMFORT mode, ECO PRO mode, which is geared towards efficiency, and SPORT mode, which enables even more dynamic driving. ECO PRO adjusts the characteristics of the accelerator pedal and transmission as well as the heating/air conditioning settings to suit the driving situation.

The five-arm rear axle is particularly rigid, so it enables precise wheel control – a must for exceptionally dynamic driving. The axle is also expertly designed for comfortable coasting. Furthermore, the flat configuration with widely placed spring struts allows for a level luggage compartment with a large loading width.

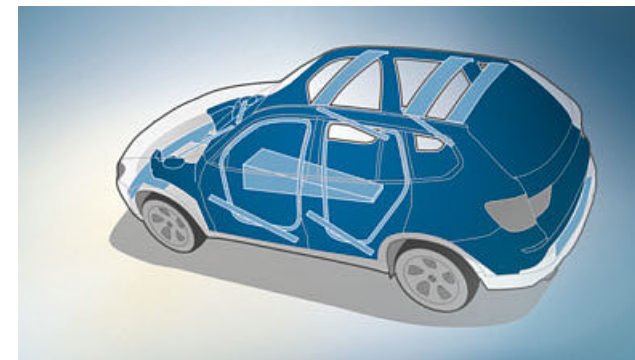
Safety.

Unparalleled safety with the latest BMW technology.

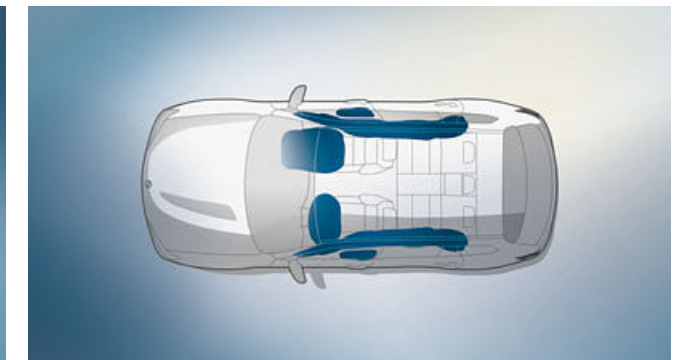
The BMW X3 is full of cutting-edge technology that can always be relied on. Superb handling and innovative equipment come as standard, giving the driver exactly the right support for any situation. It all means that you can feel safe in all road conditions.



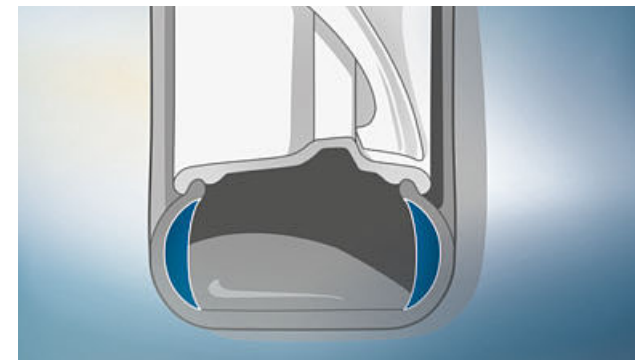
Multi-faceted functionality. Singular safety. The BMW X3 offers a wide spectrum of cutting-edge safety systems. Dynamic Stability Control (DSC), for example, can detect the onset of a loss of traction and prevents the vehicle from veering off course. There are also the optional Adaptive Headlights with variable light distribution for increased comfort and safety. The swivelling headlights follow the turns of the steering wheel to guarantee optimum visibility through every corner.



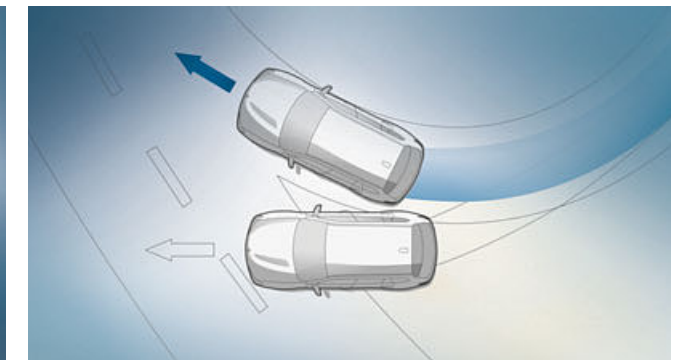
■ The **passenger cell** ensures optimum passive safety in the event of front, side and rear crashes thanks to a functionally designed structure featuring a special system of members and node connections and the targeted use of high-strength materials.



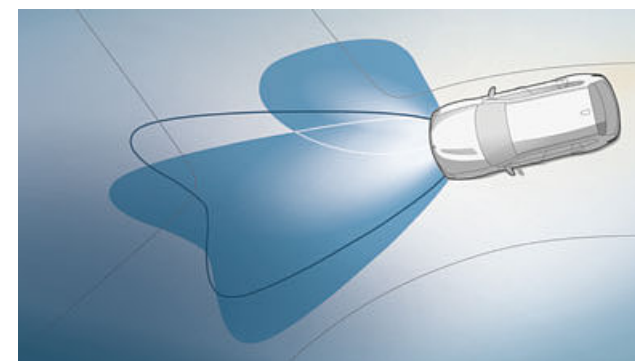
■ The **airbags for the driver and front passenger** are an integral part of the optimally coordinated safety components in a BMW. Driver and front passenger airbags as well as side and head airbags provide strategic protection.



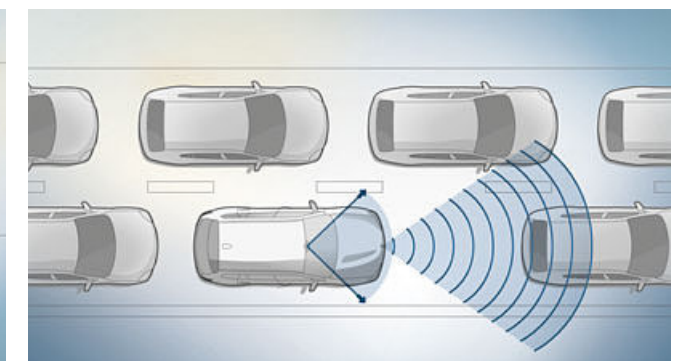
■ The **Tyre pressure indicator** shows the exact air pressure at all times and automatically warns the driver of any loss of pressure. The system uses sensors to record data for each tyre before transmitting it wirelessly to a control unit. So the Tyre pressure indicator is capable of displaying both slow and rapid loss of air pressure.



■ The **Dynamic Stability Control (DSC)** with extended functionality stabilises the vehicle as soon as any skidding motion is detected. Its extended functionality includes Cornering Brake Control (CBC), the hill-start and braking assistant, brake drying and braking readiness. For even more athletic driving, the Dynamic Traction Control (DTC) function allows increased wheel slip.



□ **Adaptive LED Headlights**, including low-beam and high-beam headlights, LED turn indicators, BMW Selective Beam (anti-dazzle High-Beam Assistant) and Adaptive Headlights.



□ **Approach control warning¹**, which is part of the Driving Assistant package, is a camera-based safety feature that monitors vehicles ahead and provides a warning when distances become too close.

¹ The Approach control warning with light city braking function helps the driver to avoid collisions. It provides a warning at speeds of up to 60 km/h.



INDIVIDUALITY AND VERSATILITY.

EQUIPMENT: BMW models, equipment highlights, wheels and tyres and Original BMW Accessories.

COLOURS: A world of colour for the exterior and interior.

TECHNICAL DATA: Weight, engine, transmission, performance, fuel consumption, wheels and dimensions.

BMW SERVICE: BMW Service, BMW Financial Services and BMW Experience.



BASIC.



[01 / 03] The BMW X3 in the optional exterior colour Mineral Silver metallic with optional 17" light alloy wheels Streamline style 306. **[02]** The leather steering wheel with multifunction offers satisfying grip.

[04] The optional sport seats in optional cloth/leather combination Pearlpoint Anthracite provide outstanding seating comfort and a sense of elegance to the interior. **[05]** 18" light alloy wheels V-spoke style 307, 8 J x18 with 245/50 R 18 tyres (standard for X3 xDrive28i, X3 xDrive35i, X3 xDrive30d and X3 xDrive35d).

MODEL xLINE.

■ Standard equipment □ Optional equipment

Model xLine interior equipment:

- Door sill finishers in Aluminium with "BMW xLine" lettering
- Seats in Cloth/leather combination ,Carve' Amber/Black with Active Red contrast stitching
- Seats in Leather 'Nevada' Ivory White', Mocha or Black (each with application and stamping on the headrests) or Leather ,Nevada' in Beige, Saddle Brown or Oyster
- Sport leather steering wheel
- Car key with Aluminium satinised detailing
- Interior trim finishers Dark Copper high-gloss
- Interior trim finishers in fine-wood trim Finition Anthracite, Finition Light or burl walnut – each with accent in Pearl Chrome or Interior trim finishers Aluminium, finely brushed lengthwise
- Loading sill trim in stainless steel

Model xLine exterior equipment:

- BMW kidney grille with exclusively designed vertical slats in Aluminium satinised
- Front bumper with specific design elements and sump guard design element in Aluminium satinised
- 18" light alloy wheels Y-spoke style 607
- 19" light alloy wheels Y-spoke style 608 with mixed tyres, other wheels available
- Side window surrounds and window recess finisher in Aluminium satinised, B-pillar and C-pillar in Black high-gloss
- Sump guard, rear in Aluminium satinised
- Tailpipe trim strip in Aluminium satinised
- Side skirts in Aluminium satinised

01 □



02 □



03 ■



04 □



05 □



06 ■



07 ■



08 ■



[01 / 05] The xLine model of the BMW X3 in optional exterior colour Deep Sea Blue metallic and 18" light alloy wheels Y-spoke style 607 (shown here with optional Adaptive LED headlights). **[02]** 19" light alloy wheels Y-spoke style 608 with mixed tyres. Front: 8.5 J x 19 with 245/45 R 19 tyres. Rear: 9.5 J x 19 with 275/40 R 19 tyres. **[03]** The front profile of the Model xLine is particularly striking: the BMW kidney grille plus air inlet elements in satinised aluminium give the BMW X3 a strong presence (shown here with the optional Adaptive LED headlights). **[04]** Seats in optional Mocha Nevada leather upholstery give the interior a very sophisticated appearance.

[06] Doorsill finishers in aluminium and with the BMW xLine logo greet the driver and front passenger on boarding. **[07]** 18" light alloy wheels Y-spoke style 607, 8 J x 18 with 245/50 R 18 tyres. **[08]** The cockpit with the standard Sport leather steering wheel with multifunction and the optional Burl Walnut fine-wood trim with accent line in Pearl Chrome provide the interior with a look of natural elegance.

M SPORT PACKAGE.

■ Standard equipment □ Optional equipment

powered by 

M Sport package interior equipment:

- M door sill finishers, M driver footrest
- Sport seats for driver and front passenger in Cloth/leather combination ,Pearlpoint' Anthracite, other upholsteries available
- M Leather steering wheel with multifunction buttons
- BMW Individual headliner anthracite
- Interior trim finishers Aluminium, finely brushed lengthwise, other trims available
- Car key with blue detailing
- Loading sill trim in stainless steel
- 8-speed Steptronic transmission with gearshift paddles (xDrive20i, sDrive18d, xDrive20d)
- 8-speed Steptronic Sport transmission (xDrive28i, xDrive35i, xDrive30d, xDrive35d)

M Sport package exterior equipment:

- M Aerodynamics package with front apron, side skirts, wheel arch trim and cladding in body colour, rear apron with diffuser insert in Dark Shadow metallic
- 18" M light alloy wheels Star-spoke style 368 M
- 19" M light alloy wheels Double-spoke style 622 M with mixed tyres
- 20" M light alloy wheels Double-spoke style 310 M with mixed tyres
- Sport suspension settings, alternatively Standard running gear or □ Electronic Damper Control
- BMW Individual high-gloss Shadow Line, alternatively BMW Individual Exterior Line Aluminium satinised
- M logo on the sides
- Exclusive paintwork in Carbon Black metallic, other paintworks available
- BMW Individual roof rails high-gloss Shadow Line, alternatively roof rails Aluminium satinised

01 □



02 □



03 ■



04 □



05 ■



06 ■



07 ■



[01 / 04] The BMW X3 with M Sport package in optional exterior colour Space Grey metallic and optional 19" M light alloy wheels Double-spoke style 622 M with mixed tyres (shown here with the optional Adaptive LED headlights). **[02]** 20" M light alloy wheels Double-spoke style 310 M with mixed tyres. Front: 8.5 J x 20 with 245/40 R 20 tyres. Rear: 10 J x 20 with 275/35 R 20 tyres. **[03]** The Sport seats provide particularly good hold and, with the optional Ivory White Nevada leather with appliqué and imprints on the head-restraints, underscore the sporty appearance of the BMW X3 with the M Sport package.

[05] The BMW Individual high-gloss Shadow Line roof rails complement the M Sport package. **[06]** 18" M light alloy wheels Star-spoke style 368 M, 8 J x 18 with 245/50 R 18 tyres. **[07]** The M Leather steering wheel including multifunction buttons and an integrated driver-side airbag features the three-spoke design. With a steering wheel rim in leather ,Walknappa' Black with black stitching and contoured thumb rests, it provides a direct, athletic steering experience.

EQUIPMENT HIGHLIGHTS.

■ Standard equipment □ Optional equipment



[01] Xenon Headlights with low-beam and high-beam functions include automatic headlight range control as well as parking lights, side lights and daytime running lights. **[02]** Adaptive LED Headlights incl. low- and high-beam and LED indicators, BMW Selective Beam (anti-dazzle High-Beam Assistant) and Adaptive Headlights with variable light distribution for city and motorway. Cornering lights for optimum road illumination are also featured. **[03]** The light generated by the LED fog lights is very similar to daylight and enables the driver to see better and drive more safely in inclement weather. **[04]** The Panorama glass roof provides fresh air and ensures a friendly, light-flooded ambience in the interior. **[05]** BMW Individual Exterior Line incl. trim strips and window recess finishers in satin-finish Aluminium. **[06]** The trailer tow hitch with electronically pivoting tow ball (not visible) and stability control is capable of pulling heavy loads of up to 2,400kg (depending on model and transmission). **[07]** The roof rails in satin-finish aluminium provide the base for a multifunctional BMW roof rack unit.



[08] Radio BMW Professional includes features such as a built-in 6.5" LCD colour display, iDrive Controller, an MP3-compatible CD drive and six loudspeakers. **[09]** The Navigation system Professional includes a Hands-free facility, a USB interface and the radio BMW Professional, among other things.¹ **[10]** Navigation system Business: with iDrive Controller, built-in 6.5" LCD colour display and three years of complimentary map updates. **[11]** Harman Kardon surround sound system with 600 watt digital amplifier, vehicle-specific equalising and loudspeakers with chrome detailing. **[12]** Telephony with wireless charging offers a comprehensive telephony package with Bluetooth connectivity, an NFC interface and the technical capacity for a WiFi hotspot.² **[13]** Storage space incl. compartments with a range of storage possibilities in the doors and cupholders. **[14]** Interior and driver-side exterior mirrors with automatic anti-dazzle function, including fold-in function for the exterior mirrors and automatic parking function for the front passenger exterior mirror. **[15]** The High-beam assistant supports the driver at night by automatically activating and deactivating the high-beam and low-beam headlights depending on the presence of vehicles ahead.

¹ Automatic map updates are available for three years without a licence charge.

² The smartphone holder on the side of the centre console enables inductive charging for mobile phones compatible with the Qi standard. For selected smartphones which do not support Qi-standard inductive charging, special charging covers are available from BMW Parts and Accessories. Establishing an internet connection through the SIM card with a 4G/LTE mobile phone network incurs additional costs which are charged separately by the mobile phone provider.

EQUIPMENT HIGHLIGHTS.

■ Standard equipment □ Optional equipment



[01] The Rear view camera shows the area behind the vehicle on the Control Display. Interactive track lines and obstacle markings also help the driver when reversing. **[02]** The full-colour BMW Head-Up Display¹ projects information relevant to the journey directly into the driver's field of vision. **[03]** The instrument cluster features four analogue dials including a speedometer, rev counter and coolant temperature display, as well as a 2.7" Info Display. **[04]** Speed Limit Info including the No-overtaking indicator displays speed limits and provides information on no-overtaking zones.² **[05]** The Driving Assistant combines the Lane Departure Warning and Approach Warning systems. **[06]** Surround View is a visual parking aid. The immediate 360-degree environment is shown on the Control Display via cameras on the vehicle. **[07]** Lane Change Warning alerts the driver to vehicles in the blind spot as well as vehicles in the neighbouring lane by means of a visual signal and vibration in the steering wheel. **[08]** Driving Assistant Plus (only available with Steptronic transmission) incl. Approach and Lane Departure Warning, Active Cruise Control with Stop&Go function. **[09]** The Parking assistant³ makes parallel parking easier. It does the steering while the driver remains in control of the accelerator and brake.

[10 / 11] Two front cupholders offer practical storage. **[12]** The multifunction buttons on the steering wheel can be used to operate the telephone, voice control and audio functions, as well as the Cruise Control. **[13]** Driving Experience Control lets the driver choose between the standard COMFORT mode, ECO PRO mode, geared towards efficiency, and SPORT mode. **[14]** M Leather steering wheel including multifunction buttons, steering wheel rim in leather 'Walknappa' Black with contoured thumb rests.⁴ **[15]** The Steering-wheel heating quickly warms up the rim of the steering wheel at the push of a button – which is especially comfortable in winter. **[16]** The Dynamic Damper Control makes it possible to adjust the damper characteristics to suit the driving situation, increasing comfort and driving dynamics. **[17]** Thanks to its tightly spaced gear ratios and fast engine speed transitions, the 8-speed Steptronic transmission ensures greater driving comfort, smoother gearshifts and low fuel consumption. **[18]** The 8-speed Steptronic Sport transmission enables automatic gear selection as well as manual shifting via the gearshift paddles or gear lever.

¹ The display is not fully visible when wearing polarised sunglasses. The exact content shown on the BMW Head-Up Display will depend on the equipment options chosen. Further optional equipment is required for the display.

² Available only in conjunction with the Navigation System.

³ Not available with 17" light alloy wheels.

⁴ Available only in combination with Steptronic transmission with gearshift paddles or with Steptronic sport transmission.

EQUIPMENT HIGHLIGHTS.

■ Standard equipment □ Optional equipment



01 □



02 □



03 □



08 ■



09 ■



10 □



04 □



05 ■



11 ■



12 □



06 □



07 ■



13 ■



14 □

[01] The Sport seats for the driver and front passenger provide optimum hold through adjustment of the backrest widths, fore-and-aft positions, seat heights and the angles of the backrests and seats. **[02]** The roller sunblind for the rear side windows can be manually raised and lowered and protects against direct sunlight while also providing privacy. **[03]** The Seat heating for driver and front passenger enables the entire seat, backrest and side bolster surface to be heated. **[04]** The electrical seat adjustment is easy to use and the memory function allows users to save their preferred settings for the seat and exterior mirrors.¹ **[05]** Lighting package, partially LED: Reading lights, vanity mirror lights, footwell illumination, two-colour ambient lights (shown above) and more. **[06]** Automatic air conditioning with two-zone control² includes Automatic Air Recirculation (AAR) with an active carbon filter, as well as fogging sensors and solar sensors. **[07]** The one-zone air conditioning cools or heats the interior of the vehicle to the correct temperature in any season.

[08] A visible, circular tailpipe on both sides with a chrome trim.³ **[09]** Double tailpipes, round, left side, with chrome trim.⁴ **[10]** Comfort Access⁵ allows the driver to open the doors and start the engine without using the car key. **[11]** The luggage compartment dividing net helps to prevent loaded items from falling into the passenger compartment under heavy braking. **[12]** Automatic tailgate operation allows the tailgate to be opened and shut electronically. Simply press a button. **[13]** The Through-loading system with rear seat backrests, which are divisible in a 40:20:40 ratio, guarantees flexibility when transporting people and objects. **[14]** The Storage compartment package includes a storage compartment, 12 V sockets, a storage net in the luggage compartment, hooks, lashing rails and fastening points.

¹ Mirror memory available only in combination with interior and exterior mirrors, automatic anti-dazzle function.

² The image shows the Intelligent Safety button (only available with driver assistance systems).

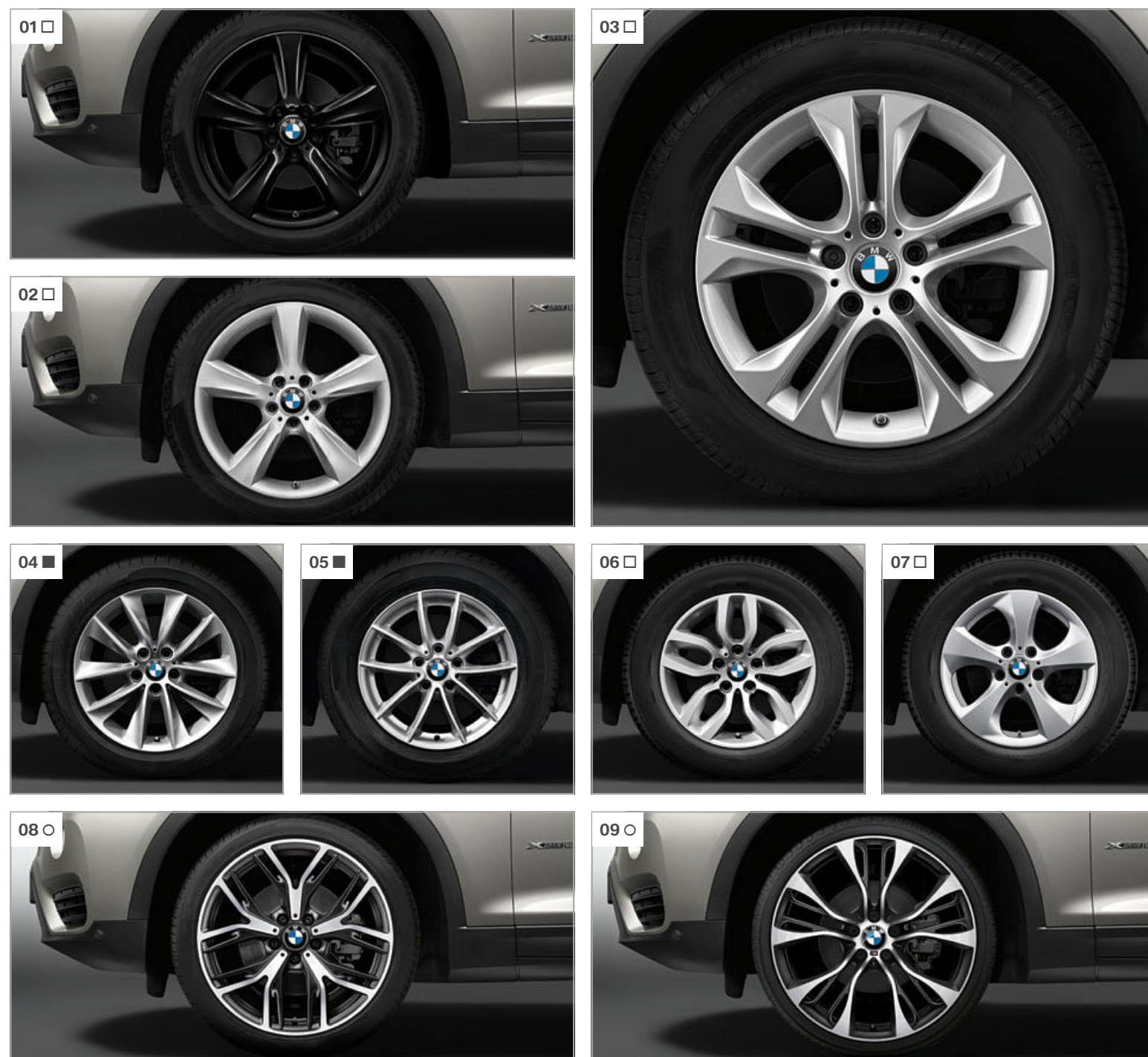
³ Standard for X3 xDrive20i, X3 sDrive18d and X3 xDrive20d.

⁴ Standard for X3 xDrive28i, X3 xDrive35i, X3 xDrive30d and X3 xDrive35d.

⁵ Contactless opening and closing of the luggage compartment is part of the Comfort Access system in conjunction with electric tailgate operation and is not available for the M Sport package.

WHEELS AND TYRES.

■ Standard equipment □ Optional equipment ○ Accessories



[01] 19" light alloy wheels Star-spoke style 606 with mixed tyres, black, front 8.5J x 19 with 245/45 R19 tyres, rear 9.5J x 19 with 275/40 R19 tyres. **[02]** 19" light alloy wheels Star-spoke style 606 with mixed tyres, front 8.5J x 19 with 245/45 R19 tyres, rear 9.5J x 19 with 275/40 R19 tyres. **[03]** 18" light alloy wheels Double-spoke style 605, 8 J x 18 with 245/50 R 18 tyres. **[04]** 18" light alloy wheels V-spoke style 307, 8 J x 18 with 245/50 R 18 tyres (standard for X3 xDrive28i, X3 xDrive35i, X3 xDrive30d and X3 xDrive35d). **[05]** 17" light alloy wheels V-spoke style 304, 7.5 J x 17 with 225/60 R 17 tyres (standard for X3 xDrive20i, X3 sDrive18d and X3 xDrive20d). **[06]** 17" light alloy wheels Y-spoke style 305, 7.5 J x 17, with 225/60 R 17 tyres. **[07]** 17" light alloy wheels Streamline style 306¹, 8 J x 17 with 245/55 R 17 tyres, help conserve fuel and lower CO₂ emissions. **[08]** 20" BMW light alloy wheels Y-spoke style 542, Bicolour matt Black, gloss-lathed on visible sides and with mixed tyres. Front: 8.5 J x 20 with 245/40 R 20 tyres. Rear: 10 J x 20 with 275/35 R 20 tyres. **[09]** 21" BMW M Performance light alloy wheels Double-spoke style 599 M, forged, in Bicolour matt Black, gloss-lathed on visible sides and featuring the four-colour "M" logo, with mixed tyres, front 8.5 J x 21 with 245/35 R 21 tyres, rear 10 J x 21 with 275/30 R 21 tyres.

¹ Available only with X3 xDrive20i, X3 sDrive18d and X3 xDrive20d.

Optional and standard equipment vary according to country.

ORIGINAL BMW ACCESSORIES.



[01] BMW surfboard holder, 20" BMW light alloy wheels Y-spoke 542. **[02]** BMW Group 1 Junior Seat, suitable for children from approx. 10 months to 3.5 years (about 9–18kg). Available in two colours (pictured with sunblind). **[03]** BMW rear DVD system, infrared stereo headphones. **[04]** Snap-in adapter with USB interface for using the telephone and listening to music. **[05]** BMW holder for the Apple iPad attaches by means of a base support mounted to the front head-restraint bars. **[06]** Fitted luggage compartment mat, anti-slip, a perfect fit and made in durable plastic.

Discover a host of innovative solutions for the exterior and interior, for communication and information and for transport and luggage. Your BMW partner will be happy to advise on the complete range of Original BMW Accessories and will also be able to provide you with a special brochure. Further information can be found at any time at www.bmw.com/accessories

EXTERIOR COLOURS.

■ Standard equipment □ Optional equipment

M SPORT PACKAGE



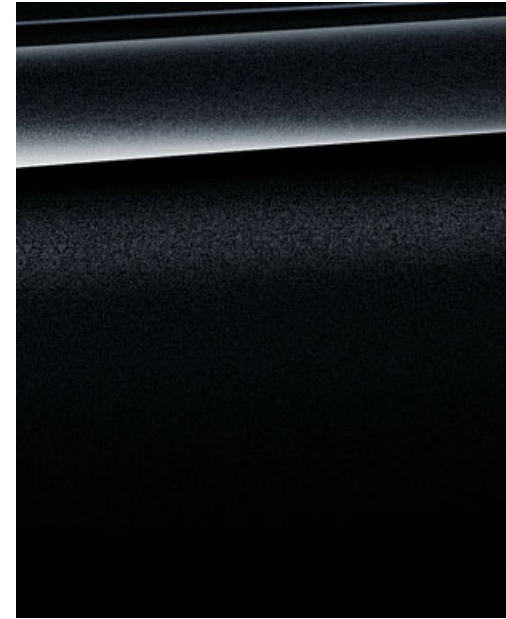
■ Non-metallic 668 Black



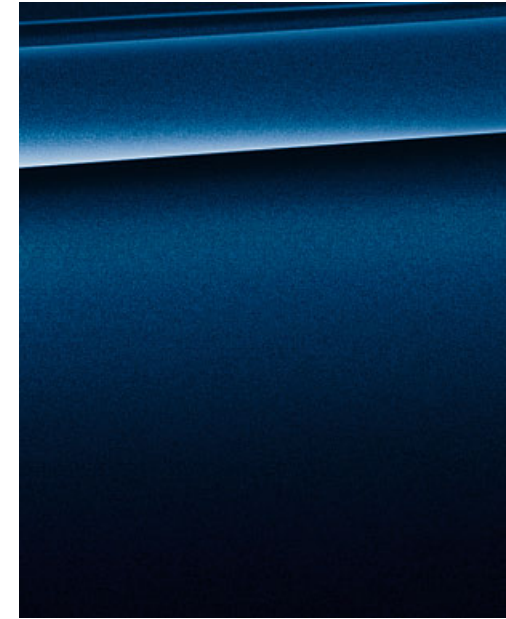
□ Non-metallic 300 Alpine White¹



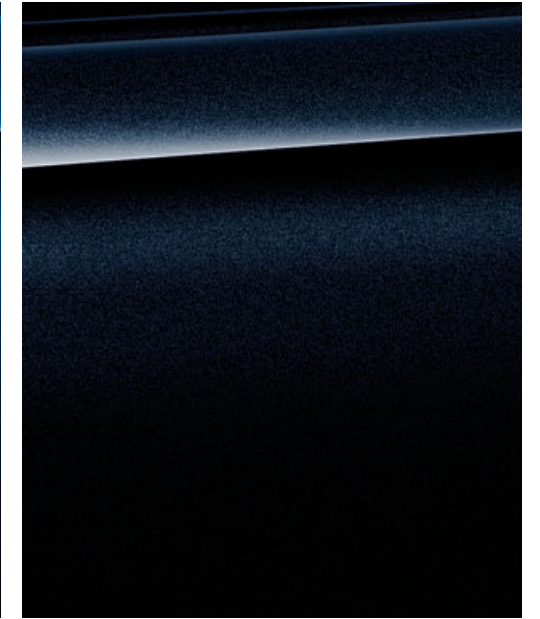
□ Metallic A96 Mineral White



□ Metallic 475 Black Sapphire²



□ Metallic A76 Deep Sea Blue



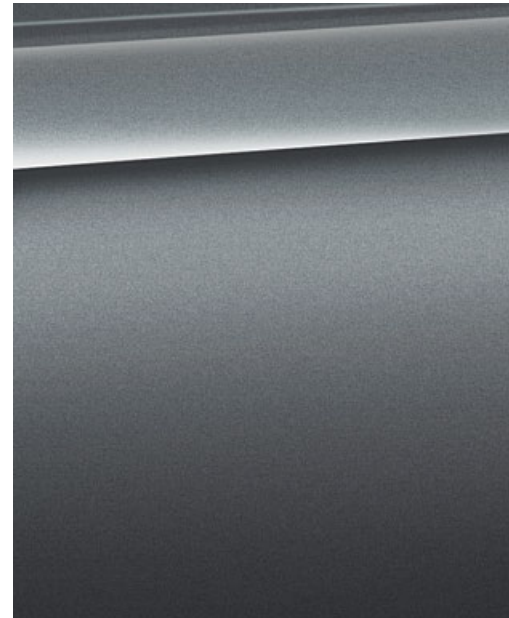
□ Metallic 416 Carbon Black



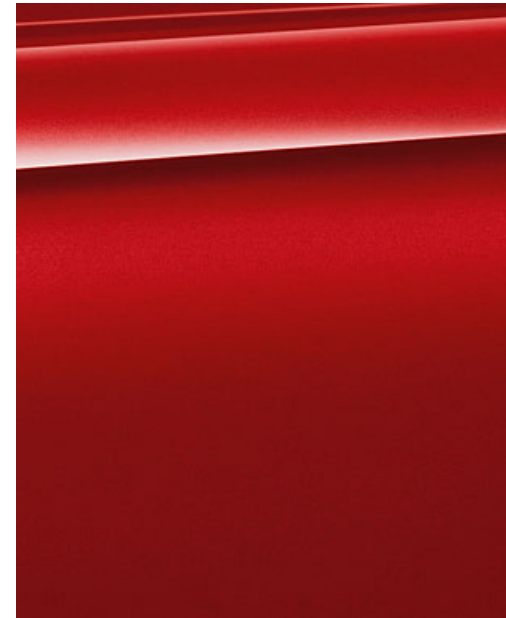
□ Metallic A14 Mineral Silver



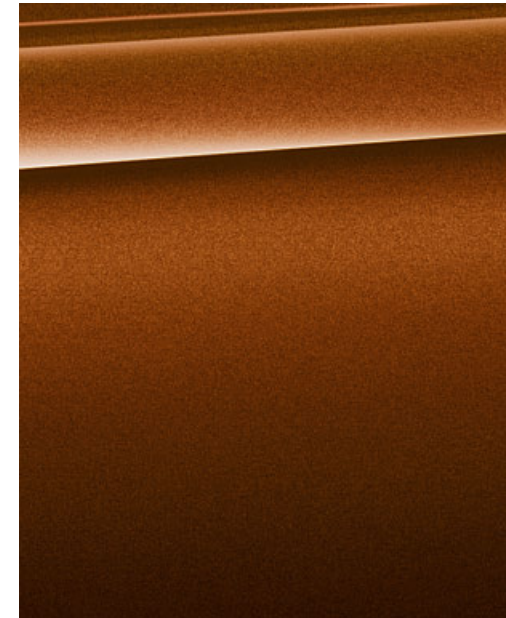
□ Metallic A83 Glacier Silver²



□ Metallic A52 Space Grey²



□ Metallic A75 Melbourne Red²



□ Metallic C29 Chestnut Bronze

¹ Standard with the M Sport package.
² Also optionally available with the M Sport package.

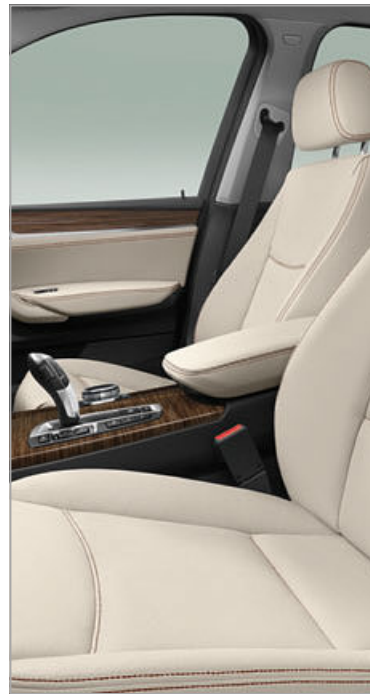
Optional and standard equipment vary according to country.

[Colour samples] These colour samples are meant to give a first impression of paints and materials. Experience has shown, however, that printed versions of paint and upholstery colours cannot in all cases faithfully reproduce the appearance of the originals. We therefore recommend that you consult your BMW partner on your preferred colour choices. They will be happy to show you samples and assist you with any special requests.

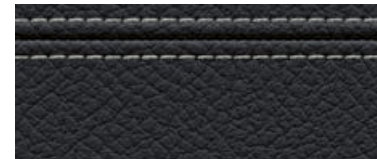
INTERIOR COLOURS.

■ Standard equipment □ Optional equipment

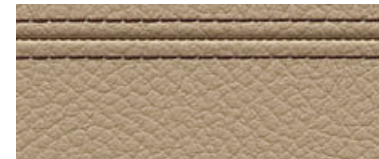
UPHOLSTERY COLOURS



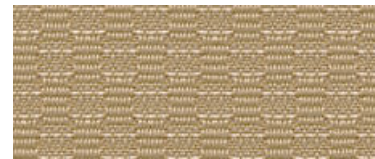
■ **Ribbon cloth** AYAT Anthracite⁵



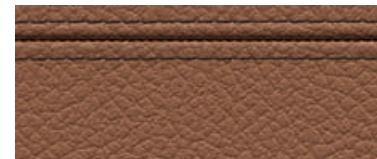
□ **Nevada leather** LUSW Black with Grey contrast stitching²



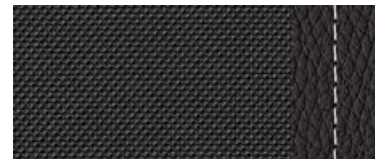
□ **Nevada leather** LUB4 Savannah Beige with Mocha contrast stitching^{1,2}



■ **Ribbon cloth** AYB4 Beige⁵



□ **Nevada leather** LUD3 Saddle Brown with Mocha contrast stitching^{1,2}



□ **Cloth/leather combination Pearlpoint** FHAT Anthracite with Grey contrast stitching⁴



□ **Nevada leather** LUCX Oyster with Mocha contrast stitching^{1,2}

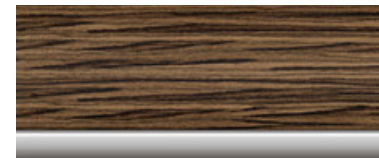
INTERIOR COLOURS



■ **Black**



■ **4CG Satin Silver, matt**



□ **4FV Fine-wood trim Finesline, light, with accent line in Pearl-Gloss Chrome**^{1,2}



■ **Beige**



□ **4AD Fine-brushed aluminium**¹



□ **4FW Fine-wood trim Burled Walnut with accent line in Pearl-Gloss Chrome**^{1,2}

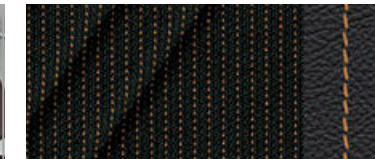


□ **4FU Fine-wood trim Finesline Anthracite with accent line in Pearl-Gloss Chrome**^{1,2}

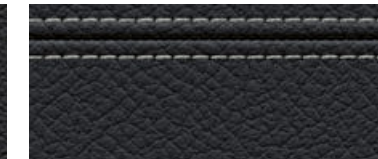
MODEL xLINE



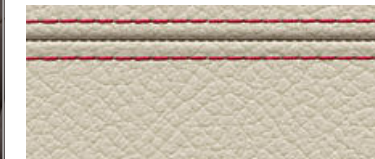
UPHOLSTERY COLOURS³



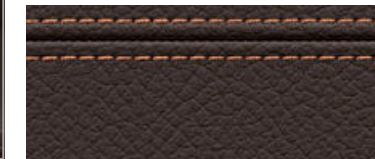
■ **Cloth/leather combination Carve** CVLN Amber with Active Red contrast stitching



□ **Nevada leather** LUSQ Black with Grey contrast stitching and appliqué and imprint

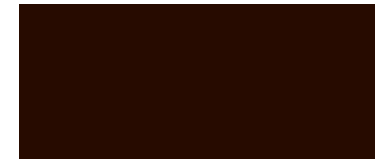


□ **Nevada leather** LUNE Ivory White with Sport Red contrast stitching and appliqué and imprint^{2,4}



□ **Nevada leather** LUNF Mocha with Active Red contrast stitching and appliqué and imprint²

INTERIOR TRIMS³

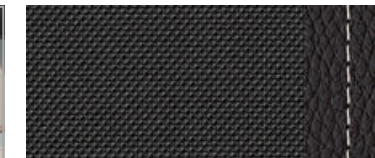


■ **4L3 Dark Copper, high-gloss**

M SPORT PACKAGE



UPHOLSTERY COLOURS³



■ **Cloth/leather combination Pearlpoint** FHAT Anthracite with Grey contrast stitching⁴

INTERIOR TRIMS³



■ **4AD Fine-brushed aluminium**¹

¹ Also optionally available with the Model xLine.

² Also optionally available with the M Sport package.

³ Additional upholstery colours and interior trims are available, as shown on these pages.

⁴ Only in conjunction with Sport seats for driver and front passenger.

⁵ Not available in conjunction with sport seats.

		X3 xDrive20i	X3 xDrive28i	X3 xDrive35i	X3 sDrive18d	X3 xDrive20d	X3 xDrive30d	X3 xDrive35d
--	--	--------------	--------------	--------------	--------------	--------------	--------------	--------------

Weight								
Unladen EU ¹	kg	[1810]	[1845]	[1900]	1735 [1755]	1805 [1820]	[1905]	[1945]
Max. permissible	kg	[2325]	[2360]	[2405]	2300 [2320]	2350 [2365]	[2410]	[2440]
Permitted load	kg	[590]	[590]	[580]	640 [640]	620 [620]	[580]	[570]
Permitted load, unbraked	kg	[750]	[750]	[750]	750 [750]	750 [750]	[750]	[750]
Permitted trailer load, braked, max. 12% gradient/max. 8% gradient ²	kg	[2400/2400]	[2400/2400]	[2400/2400]	2000/2000 [2000/2000]	2000/2000 [2400/2400]	[2400/2400]	[2400/2400]
Luggage compartment capacity min. – max.	l	550–1600	550–1600	550–1600	550–1600	550–1600	550–1600	550–1600

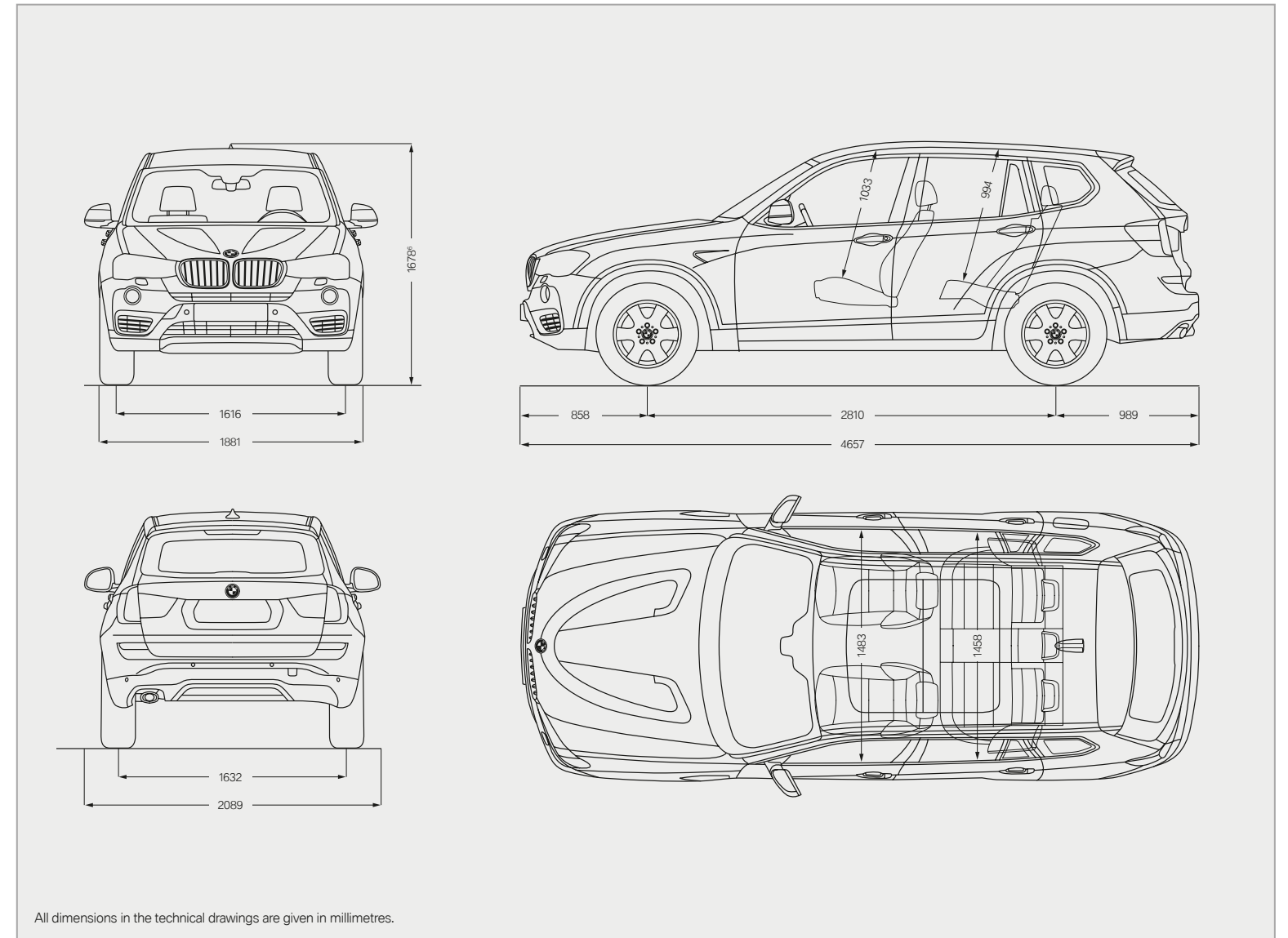
Engine ^{3,4}								
Cylinders/valves		4/4	4/4	6/4	4/4	4/4	6/4	6/4
Capacity	cc	1997	1997	2979	1995	1995	2993	2993
Max. output/engine speed	kW (hp)/rpm	135 (184)/5000–6250	180 (245)/5000–6500	225 (306)/5800–6400	110 (150)/4000	140 (190)/4000	190 (258)/4000	230 (313)/4400
Max. torque/engine speed	Nm/l/min	270/1250–4500	350/1250–4800	400/1200–5000	360/1500–2250	400/1750–2500	560/1500–3000	630/1500–2500

Power transmission								
Drive configuration		All-wheel	All-wheel	All-wheel	Rear-wheel	All-wheel	All-wheel	All-wheel
Standard transmission		8-speed Steptronic	8-speed Steptronic	8-speed Steptronic	6-speed manual	6-speed manual	8-speed Steptronic	8-speed Steptronic

Performance								
Top speed	km/h	[210]	[230]	[245]	195 [195]	210 [210]	[232]	[245]
Acceleration 0–100km/h	s	[8.2]	[6.5]	[5.6]	9.5 [9.8]	8.1 [8.1]	[5.9]	[5.3]

Fuel consumption ^{3,4}								
Urban	l/100 km	[8.7–9.2 ⁵]	[9.1–9.3]	[10.7]	5.3–5.7 ⁵ [5.4–5.8 ⁵]	6.3–5.8 ⁵ [5.3–5.7 ⁵]	[6.5–6.6]	[6.7]
Extra urban	l/100 km	[5.9–6.3 ⁵]	[6.2–6.3]	[6.9]	4.3–4.7 ⁵ [4.4–4.7 ⁵]	4.7–5.0 ⁵ [4.7–5.1 ⁵]	[5.6–5.7]	[5.5]
Combined	l/100 km	[6.9–7.3 ⁵]	[7.3–7.4]	[8.3]	4.7–5.1 ⁵ [4.7–5.1 ⁵]	5.1–5.5 ⁵ [4.9–5.3 ⁵]	[5.9–6.1]	[6.0]
Combined CO ₂ emissions	g/km	[161–171 ⁵]	[169–172]	[193]	123–133 ⁵ [125–135 ⁵]	135–145 ⁵ [129–139 ⁵]	[156–159]	[157]
Tank capacity, approx.	l	67	67	67	67	67	67	67

Wheels/tyres								
Tyre dimensions		225/60 R 17 V	245/50 R 18 W	245/50 R 18 W	225/60 R 17 V	225/60 R 17 V	245/50 R 18 W	245/50 R 18 W
Wheel dimensions		7.5 J x 17	8 J x 18	8 J x 18	7.5 J x 17	7.5 J x 17	8 J x 18	8 J x 18
Material		Light alloy	Light alloy	Light alloy	Light alloy	Light alloy	Light alloy	Light alloy



¹ Figure quoted includes a 90% full tank, 68kg for the driver and 7kg of luggage. Unladen weight applies to vehicles with standard equipment. Optional equipment increases this value.

² The actual overall trailer weight may not exceed the max. permitted trailer load, while taking into account the max. permitted tow bar download. The max. trailer load of 2400 kg only applies in conjunction with a factory-fitted trailer tow hitch and automatic transmission.

³ BMW recommends the use of RON 95 super unleaded petrol. Unleaded RON 91 and higher with a maximum ethanol content of 10% (E10) may also be used. Output and fuel consumption figures apply to RON 98 fuel.

⁴ All engines conform to the EU6 emissions standard. Fuel consumption is determined according to the ECE combined cycle in which approx. one-third of the distance covered is in urban traffic and two-thirds is extra-urban (based on the distance covered). CO₂ emissions are measured in addition to fuel consumption. Fuel consumption and CO₂ emissions are dependent on wheel and tyre size. Optional equipment may increase these figures. For further information consult your BMW partner.

⁵ The lowest value is achieved with the cost option 2AM 17" light alloy wheels Streamline 306.

⁶ Height without roof aerial is 1661mm.

Figures in [] refer to vehicles with eight-speed Steptronic transmission.

Kode	Beskrivelse	X3 sDrive20i	X3 xDrive20i	X3 xDrive28i	X3 xDrive35i	X3 sDrive18d	X3 xDrive20d	X3 xDrive30d	X3 xDrive35d
1CC	Automatisk start/stop funktion								
205	Automatgear Steptronic								
216	Servotronic								
240	Læderrat								
249	Multifunktionsrat								
255	Sportslæderrat								
258	Runflat-dæk								
2EB	Letmetalfælge 17" Y- eger 305								
2K0	Letmetalfælge 17" V-eger 304								
2K8	Letmetalfælge 18" V-eger 307								
2PA	Låsebolte								
2VB	Dæktryk monitor								
3AT	Tagræling, aluminium satineret								
413	Bagagenet								
423	Velourmætter								
431	Aut. antiblænd bakspejl								
465	Gennemlæsningsystem 40-20-40								
493	Bagagerumspakke								
494	Sædevarme, for								
4CG	Kabinelister, Satin Silver (mat)								
4U2	Driving Experience Control, inkl. Eco Pro								
502	Forlygtevasker med intensivrens								
520	Tågelygter								
521	Regnsensor								
534	Klimaautomatik								
544	Fartpilot med bremsefunktion								
663	Radio BMW Professional								
6AC	SOS opkald								
6AE	Teleservice								
6NH	Bluetooth Hands-free funktion inkl. USB								
840	High-speed setup								
	Stof "Ribbon"								
Uni	Solidlak								

■ = Standardudstyr

Der tages forbehold for evt. fejl og ændringer.



2EB – Letmetalfælge 17" Y- eger 305



2K0 – Letmetalfælge 17" V-eger 304



2K8 – Letmetalfælge 18" V-eger 307

WELL TAKEN CARE OF WITH BMW SERVICES:

When you buy a BMW, you can look forward to superb service and comprehensive customer care. For example, the **Condition Based Service** independently tracks both service fluid levels and the condition of parts subject to wear and then notifies you in the display when the vehicle requires servicing. So you only need to go to your BMW service partner when it's really necessary. When you do go, our

qualified BMW service specialists take care of your vehicle using the newest workshop technology and only **original BMW parts**. This service is available worldwide in more than 3,300 BMW service partner establishments in over 150 countries, to provide you with limitless driving pleasure.

BMW SERVICE.



BMW Service Packages*: Individual and stress-free, just for you. Individual, well-thought-out servicing solutions carefully tailored to you and your vehicle. With one-off, predictable costs, BMW Service Packages give you complete peace of mind, so you can enjoy owning a BMW to the very fullest. Whether it's fresh from the showroom or already well-travelled – there's a BMW Service Package for every phase of your vehicle's life. All bringing you maximum quality, expertise and value retention, always at reasonable, transparent rates. And always carefully tailored to you and your BMW. Find out just how stress-free truly individual service can be!

www.bmw.com/serviceinclusive



BMW Mobile Service*: This service is there for you day and night. As soon as you call, we spring into action, and take care of everything that may need doing after an accident or breakdown, with specially trained technicians working – on site or via telephone – to get your car back on the road. We offer comprehensive, country-specific mobility packages for breakdowns, and insurance that covers you in the event of an accident or theft. So if anything untoward does happen, simply call up the BMW accident hotline and we'll go to work. We'll take care of calling the emergency services, a tow truck, a replacement car, notifying your insurance company and much more. For further information please visit www.bmw.com



BMW TeleServices*: With Condition Based Service, you'll be automatically reminded of your next necessary service appointment on the vehicle screen. Provided you've consented, key vehicle data will be relayed to BMW automatically for analysis. Your assigned BMW service partner will access the information and contact you free of charge to make a service appointment as and when necessary. To access BMW Teleservices, the vehicle must be equipped with the optional Intelligent Emergency Call or ConnectedDrive Services. The service can be deactivated at any time you so desire, and you can change your service partner in the iDrive menu or ConnectedDrive portal. Find out more at www.bmw.com/teleservices

BMW FINANCIAL SERVICE.



BMW Financial Services*: Mobility solutions to meet your needs. BMW Financial Services provides you with attractive leasing, finance and insurance options. To find out more, see the price list or go to www.bmwfs.com. Your BMW partner will also be glad to draw up an individual offer for you in person.

THE BMW EXPERIENCE.



BMW TV*: www.bmw.tv enables you to experience the BMW brand in all its diversity. Features, portraits and background reports provide you with information on automobiles, innovations, sports and lifestyle topics.



BMW Driving Experience: The better you control your BMW, the more enjoyment you will derive from driving it. Use our training courses to learn for yourself what it means to reach a car's physical limits on various types of surfaces, and what you have to do to control your vehicle even in extreme situations. For further information please visit www.bmwdrivingexperience.com



BMW Welt: Picking up a car at BMW Welt has always ranked among the best moments for any driver. Turn this moment into one whole unforgettable day: experience the handover of your new BMW as just one part of a programme of activities perfectly tailored to your interests. At BMW Welt, the BMW Group plant, the BMW Museum, the BMW Group headquarters and the BMW Group Classic all combine to provide you with a great experience of an exciting history, a breathtaking present – and spectacular visions for the future. Find out more at www.bmw-welt.com/en



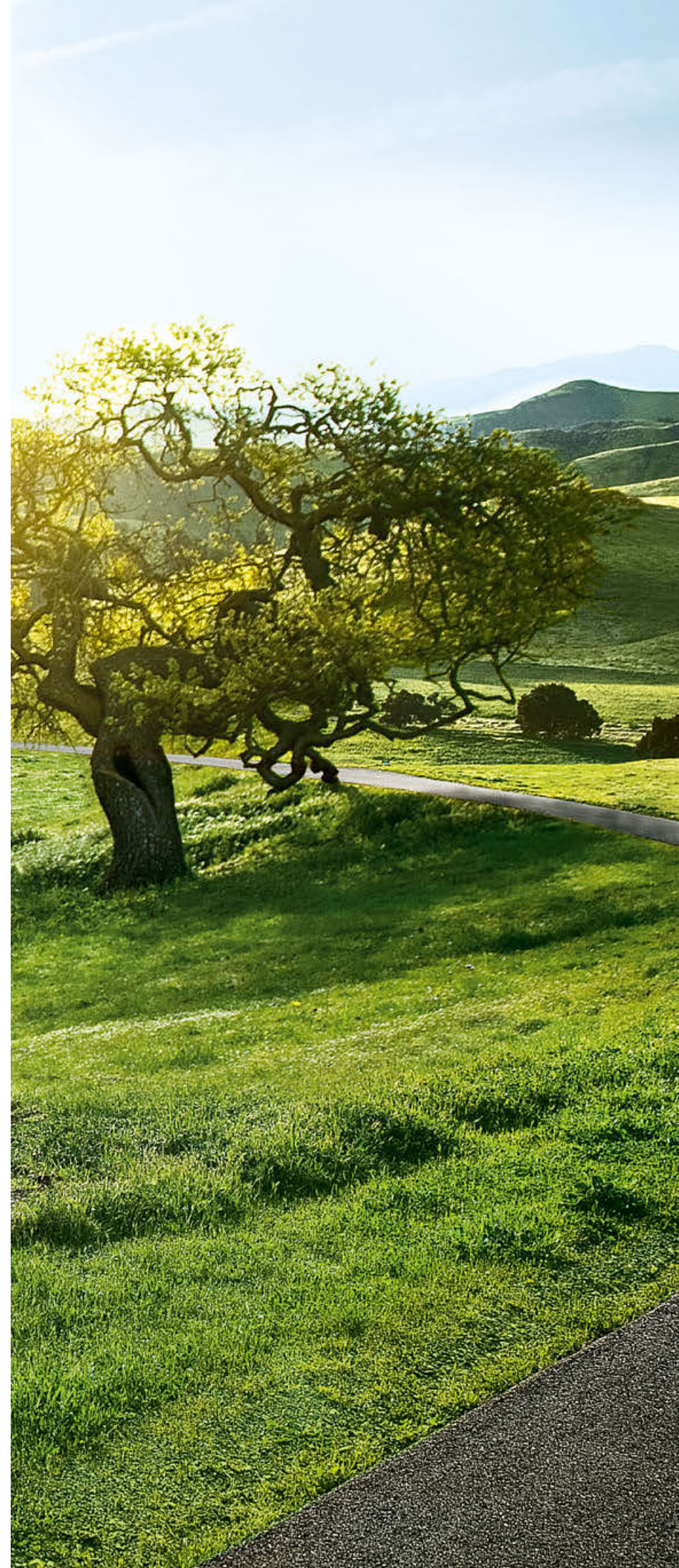
BMW Magazine: In BMW Magazine, experience the newest BMW models in front of stunning backdrops. Discover new design trends, travel destinations and the richness of modern life. Encounter people with visionary ideas who are changing the world. Find out more at www.bmw.com/magazine

* May not be available in all countries. Please consult your BMW partner.

SHAPING THE FUTURE – RESPONSIBLY.

In 2015, the BMW Group was once more listed in the Dow Jones Sustainability Index as the most sustainable automotive company worldwide. This makes BMW Group the only company in the automotive industry to be listed without interruption since the index was established. The development of efficient vehicle concepts and environmentally friendly production processes, including recycling, is an integral part of our philosophy. BMW EfficientDynamics and electric vehicles have enabled us to cut CO₂ emissions from our European new-vehicle fleet by more than 40% since 1995. We have also reduced the amount of resources used in production, such as water and energy, by 34% between 2006 and 2015, with a reduction to 45% of previous levels aimed at for 2020. In terms of other resources (such as volatile organic compounds, process wastewater and waste) our 45% target was met in 2014, and we will continue to work on further improvement. Production at our engine plant in Steyr has been waste-water free since 2007. And of course, at the end of its service life, every one of our vehicles can be easily and economically recycled. To return your end-of-life vehicle, please contact your BMW partner. For more information on this issue please visit our website.

www.bmw.com/EfficientDynamics
www.bmwgroup.com/responsibility
www.bmw.com/recycling



More about BMW



Sheer
Driving Pleasure

www.bmw.com

The models illustrated in this brochure show the specifications of vehicles produced by BMW AG for the German market. In part, they include optional equipment and accessories not fitted as standard. According to the specific requirements of other markets, alterations in models, standard and optional equipment, as described in this brochure, may occur. For more precise information about country-specific vehicle versions, please contact your local BMW partner. Subject to change in design and equipment.

© BMW AG, Munich/Germany. Not to be reproduced wholly or in part without written permission of BMW AG, Munich.

4 11 003 255 20 2 2016 BM. Printed in Germany 2016.

