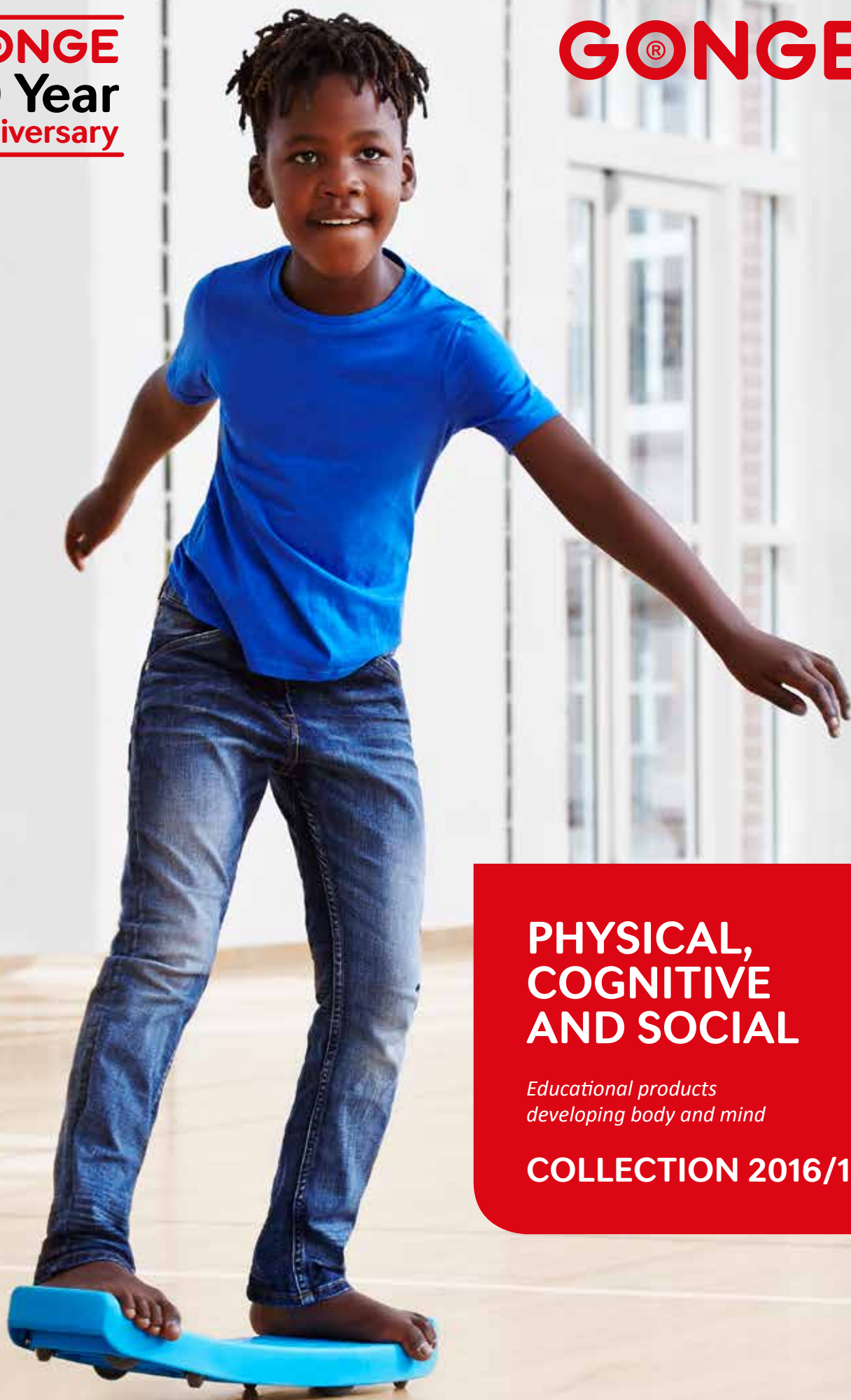


GONGE
50 Year
Anniversary

GONGE



**PHYSICAL,
COGNITIVE
AND SOCIAL**

*Educational products
developing body and mind*

COLLECTION 2016/17

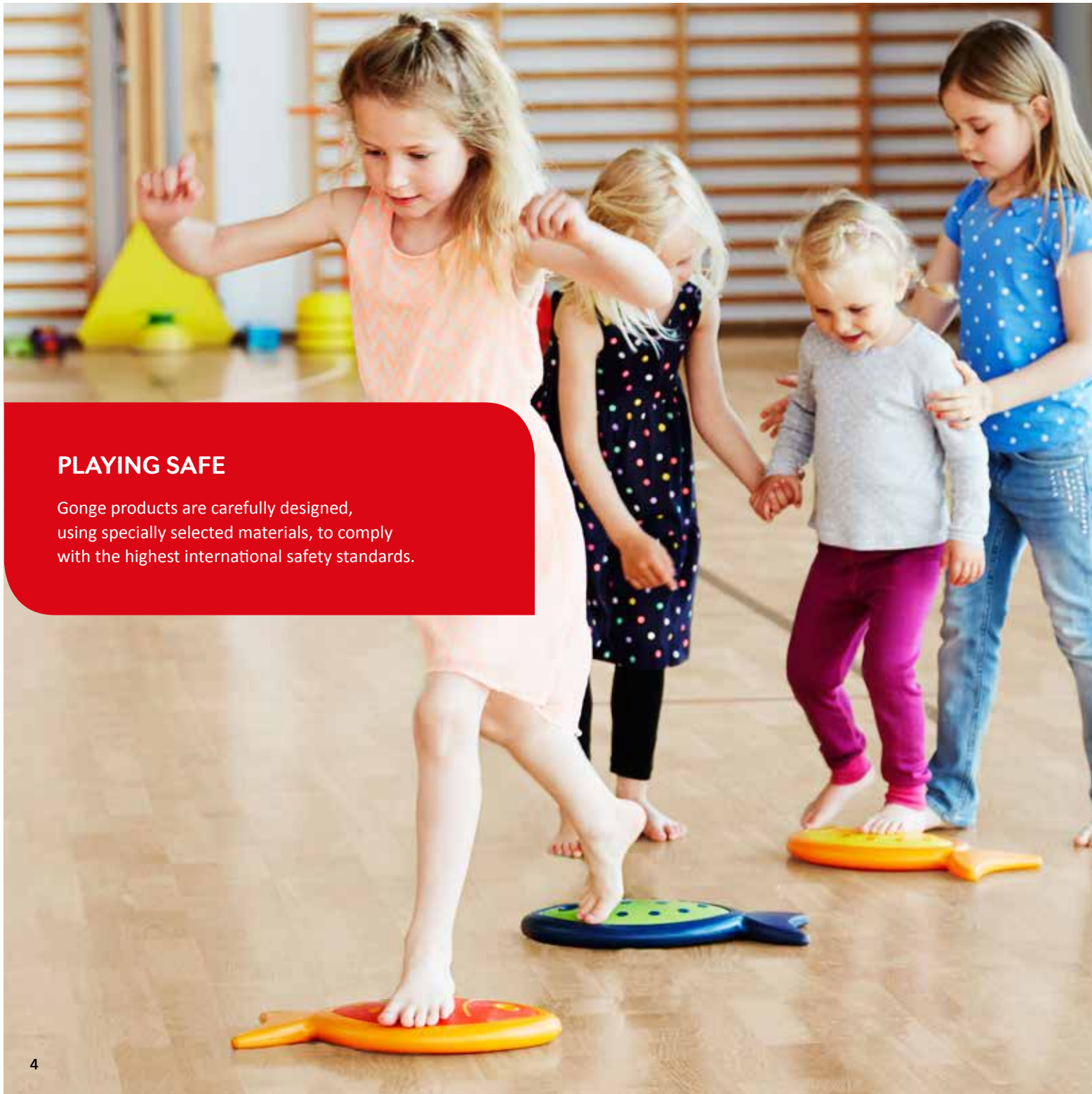


Find your favourites

Alphabetical order	page
ACTIVITY RINGS _____	64
BABY TRAMPOLINE _____	40
BALANCE PLASTIC HEMISPHERES _	55
BALANCING BOARD _____	52
BALANCING EGG _____	61
BALANCO _____	54
BLOW LOTTO _____	73
BUILD N' BALANCE® _____	14-17
CAROUSEL _____	51
CLOWN'S HAT _____	61
CONE _____	18
ENCOURAGING EXERCISE _____	71
FISH / EYES FOR FISH _____	32
FISHING ROD _____	33
FLOOR SURFER® _____	34
GIANT BALANCING BOARD _____	52
GIANT MIKADO _____	66
GO GO _____	59
GO GO BUS _____	59
HEMISPHERE STILTS _____	55
HILLTOPS _____	23
HULA HOOPS _____	18
ISLAND AND BRIDGE _____	25
JOINTS _____	19
KOALA & NON-SLIP SHOES _____	47
MAGIC SCARVES _____	71
MINI STILTS _____	56
MINI TOP _____	43
MIRROR GAME _____	72
MOTOR SKILLS DEVELOPMENT SET	41
MOUNTAIN _____	24
PARACHUTE _____	70
RING TOSS _____	67
RIVER _____	25
RIVER LANDSCAPE _____	27
RIVER STONES _____	22
ROBO-BOARD _____	37
ROCK AROUND _____	46
ROLLER _____	39
ROUND SEESAW _____	46
SEESAW _____	50
SHOAL OF FISH _____	33
STICKS _____	18
SUMMER SKIS _____	57
TACTILE DISCS _____	30
THERAPY TOP _____	53
THROWING GAME _____	67
TOP _____	44
TRAMPOLINE _____	40
TURBINO _____	73
WIPPSIDER _____	53
WIPPWALKER _____	53



By article number	page
2003 _____	72
2005 / 2006 _____	73
2095 / 2097 _____	47
2098 / 2099 _____	43
2100 / 2101 _____	44
2102 _____	52
2104 _____	46
2106 _____	46
2108 _____	57
2110 _____	52
2116 - 2118 _____	30
2127 _____	61
2128 _____	55
2129 _____	61
2131 / 2136 _____	59
2138 / 2139 _____	59
2140 _____	53
2142 / 2143 _____	54
2148 _____	57
2167 _____	51
2168 _____	34
2169 _____	50
2172 / 2174 _____	32
2175 _____	33
2176 _____	33
2180 / 2181 _____	53
2190 / 2191 _____	64
2195 _____	56
2219 _____	55
2222 - 2227 _____	16
2229 _____	14
2231 - 2233 _____	17
2238 / 2239 _____	14
2250 _____	18
2252 - 2254 _____	18
2260 _____	37
2266 / 2267 _____	39
2301 - 2305 _____	70
2306 / 2307 _____	71
2400 _____	40
2406 _____	40
2500 _____	66
2600 _____	41
2907 _____	67
2908 _____	67
2914-19 _____	71



PLAYING SAFE

Gonge products are carefully designed, using specially selected materials, to comply with the highest international safety standards.

Creative learning for 50 years!

We celebrate 50 years in the service of 'play as the mechanism for learning'. Since 1966 Gonge products have inspired and motivated children to be physically active. But more than that, they have helped them to learn and develop in creative ways. For 50 years, we have developed products that stimulate children's physical, cognitive, social and emotional development while having fun.

Play is the inspiration for all Gonge products, which are carefully designed to challenge children's physical limits, develop their cognitive skills, encourage social interaction and support emotional integrity. We believe that the development of body and mind is essential for building the confidence that children will depend on throughout life.

Every child is unique and deserves individual attention to help them develop while they play. We care for the specific needs of each child, at the functional level they require – from playful stimulation to therapeutic training to addressing specific needs. This approach helps children to grow, reaching new developmental stages and improving their functional levels. They may even use our products for training and rehabilitation in later life. (Page 78-82)

Our stimulating range of products combines educational principles, beautiful design, excellent quality and the highest safety standards. We remain loyal to our origins as a supplier to the educational market, yet our creative approach to learning has become increasingly popular with private families as well.

Read the Gonge history. (Page 76-77)





DEVELOPING STRENGTH AND CONTROL

Spinning, moving and using the body strengthens muscles and body control, while improving balance and stimulating the senses.



Physical

Gonge inspires and motivates children to be physically active. Our products will encourage children to start balancing, climbing, crawling, jumping, bouncing, spinning, walking on tip-toe, dancing and being physically active in as many ways as their imaginations and body will allow.

Gonge products can be used for anything from free play to specific therapy and structured training. Children will develop physical strength and motor skills – including weight transfer, familiarity with heights, physical coordination and agility – as well as sensorimotor abilities, such as awareness of posture, sense of touch and balance.

We aim to motivate and challenge children at any functional level to develop their confidence and physical abilities.





SHARPENS THE SENSES

Gonge challenges attention, perception, thinking and planning. All are important functions for learning.



Cognitive

Body and mind cannot be seen as separate. When playing with Gonge products, physical activities and sensations do not go without a cognitive element, helping children to improve their cognitive abilities.

Basic cognitive functions, such as memory, concentration, problem solving and spatial orientation are all vital for many of the physical activities inspired by Gonge. This can be anything from estimating the distance before a jump, to developing new language skills when naming, sorting and giving words to the physical activity. And creativity is stimulated when imagination or curiosity is required, as well as when performing or story telling is driving physical activities.

Integrating physical activity with teaching has also been recognised as a learning tool with a considerable motivational potential, and sensory motor training improves learning through stimulation of the brain.



A photograph of four young children in a playroom. They are interacting with a large, colorful structure made of stacked cones and beams. The structure is composed of red, orange, green, and blue components. The children are dressed in casual clothing: a grey long-sleeved shirt, a blue polka-dot shirt, a dark blue polka-dot dress, and a striped shirt. The background is a white wall decorated with colorful confetti. The floor is made of light-colored wood.

LEARNING TO INTERACT

Gonge lets children play and move together, so not only do they develop their ability to move and balance, they also learn to be and interact with others in a group.



Social

Physical activity often involves social interaction. Gonge invites children to engage in activities which combine physical and social abilities. Children compete, race, role-play and perform, and they can do so with the aid of our products.

Group play will help to teach them cooperation and coordination based on physical interaction.

They will then learn by imitating the actions of others – probably our most basic way of learning.

At Gonge, we are happy whenever we see our products being used in social activities, because we believe that every child best develops physically, emotionally and cognitively from the responses of others.



*It's easy to make things difficult,
but difficult to make them easy.*

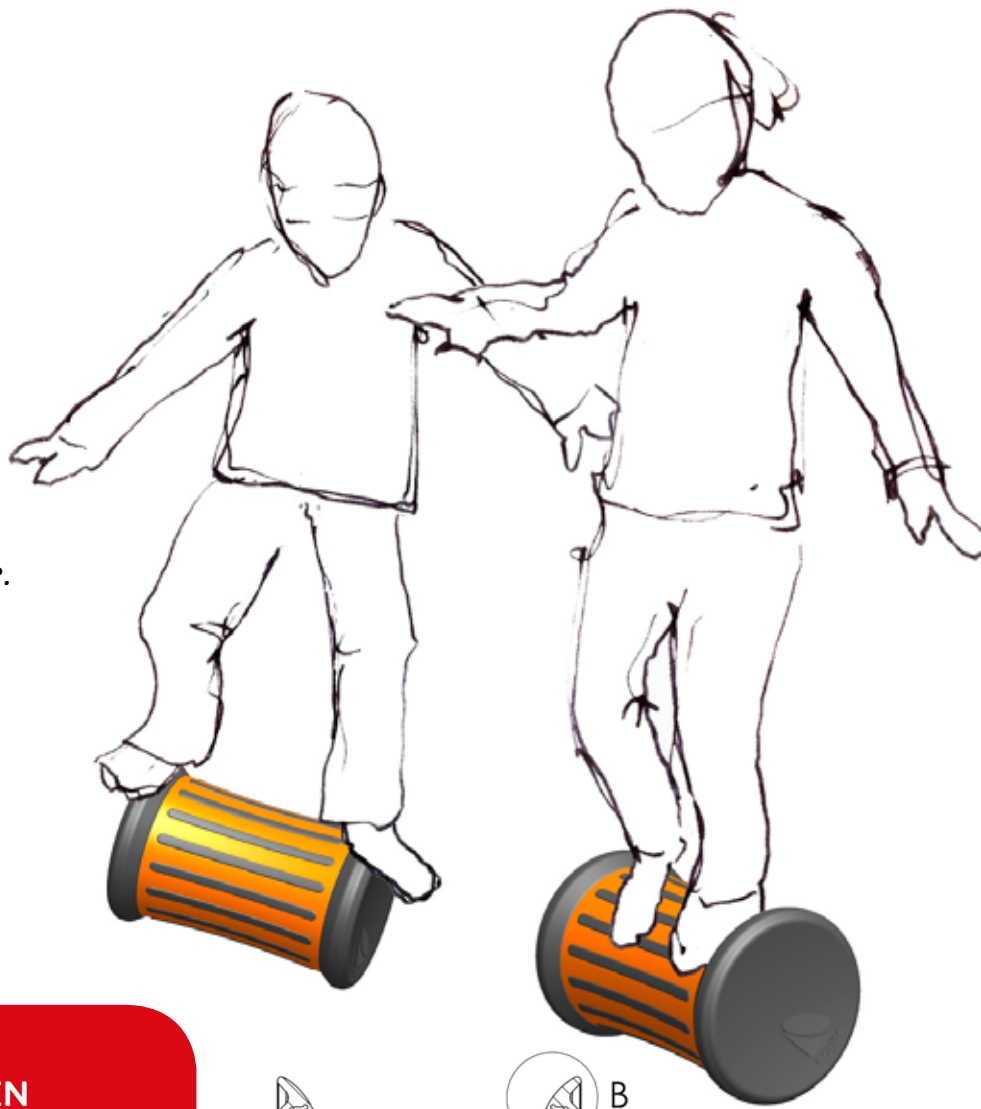
Thomas Harrit, Designer

Instead of guessing, we calculate.

Claus Molgaard, Production engineer

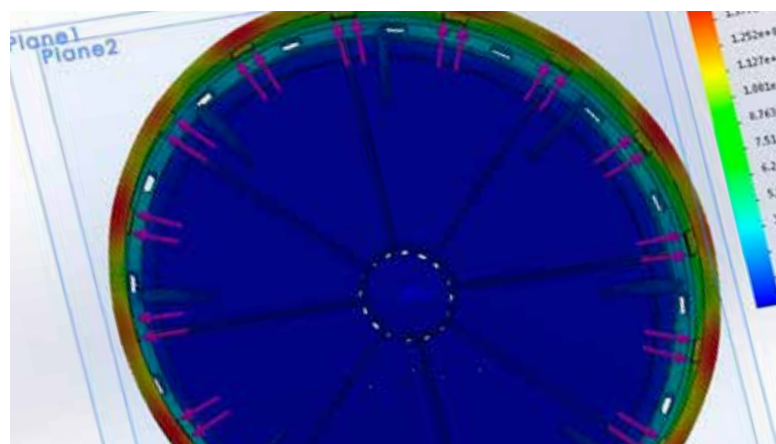
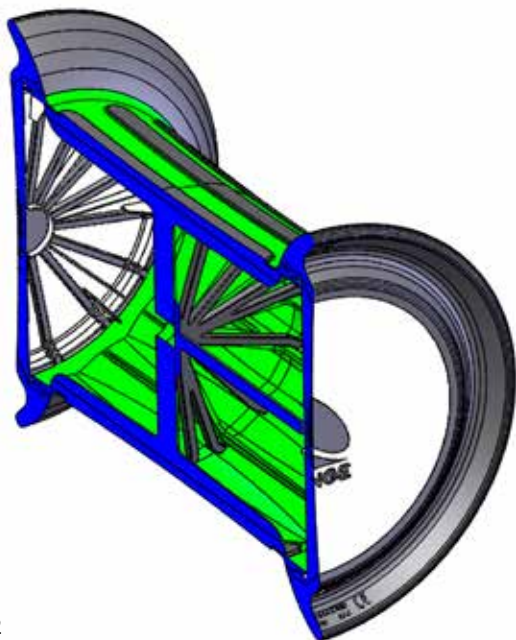
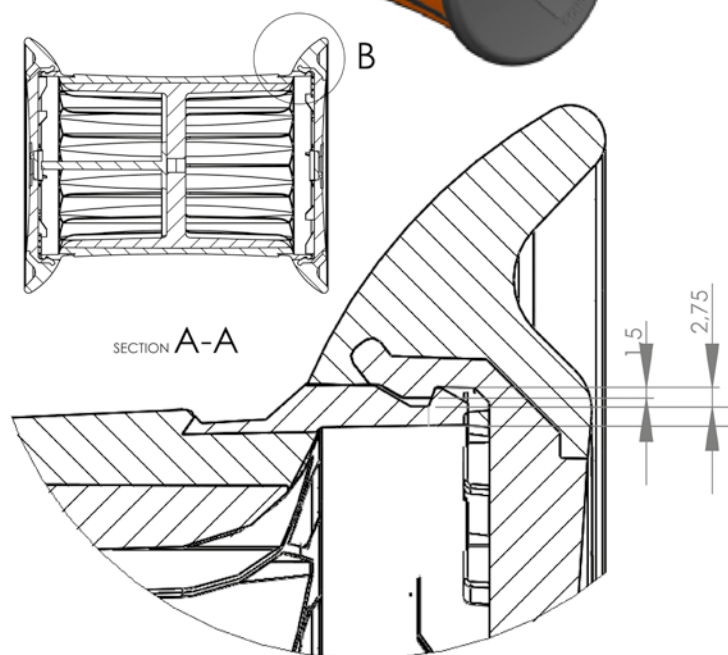
*We must motivate children
by inspiring their play.*

Hannah Harboe, Physiotherapist



WE MUST MOTIVATE CHILDREN BY INSPIRING THEIR PLAY

Designing the right products can be hard work, but we never forget play and joy during that process. Without fun, our toys will not motivate children to move and develop.



Careful thinking creates the joy of simplicity

Gonge's simple designs contain worlds of potential. It takes careful thinking to create basic shapes and a variety of functions that are like open spaces for a child's imagination.

It all starts with observations

Gonge's designers spend hours observing children's play to develop inspirational ideas for creative play – sometimes they even play themselves! They discuss possibilities with our physiotherapist and then, when the ideas take shape, they put them to the test.

We follow a number of strict guidelines when developing Gonge products. They should be safe and ergonomically correct. They aim at training selective sensing as well as sensory integration. They should contain the possibility of progression, when the children use it and improve their skills. And they should inspire social play.

Testing and trying, from idea the product

Initial drawings are discussed and examined extensively. Is the idea simple enough? Does it provide numerous ways to play? What senses and skills does it stimulate? Prototypes – either 3D prints or wooden models – are tried, tested and judged in real life. Do the children use the toy in the ways we envisioned? Can smaller children benefit?

Along the way, the design may be modified to prepare it for the final test: can it be produced as a safe, long-lasting product that will give children all over the world thousands of hours of play and help them to develop their skills? Only once everything has been simulated and analyzed will Gonge put the idea into production.



BUILD N' BALANCE®

Exciting and challenging balancing system. The elements can be combined in countless ways so use your imagination to set up all the balance courses and landscapes you can build. With the great flexibility of Build N' Balance®, the level of difficulty can be varied to suit the development levels of the children and can be built at heights ranging from 10 to 24 cm – depending on how brave the children are! Build N' Balance® is being constantly evaluated and developed, introducing new parts and features to offer even more challenging play opportunities.

Build N' Balance® Starter Set | Art 2229

This set includes 2 Top10, 3 Top24 (box 1) and 5 Planks (box 2).	Age	Product size (cm) Ø L W H			Single unit box weight kg	Single unit box volume m³	Number of units in export carton	Export carton weight kg	Export carton volume m³
Box 1 (2 Top10, 3 Top24)	2-10				5.70	0.080	1	5.70	0.080
Box 2 (5 Planks)	2-10				12.10	0.020	1	12.10	0.020

Build N' Balance® Intermediate Set | Art 2238

This set includes 3 Top10, 3 Top24, 3 Planks, 3 Log Planks, 1 Rocking Plank and 1 Tilting Disc.	Age	Product size (cm) Ø L W H			Single unit box weight kg	Single unit box volume m³	Number of units in export carton	Export carton weight kg	Export carton volume m³
	2-10				15.5	0.161	1	15.5	0.161

Build N' Balance® Advanced Set | Art 2239

This set includes 6 Top10, 2 Top24, 3 Planks, 3 Log Planks, 2 Bridge Piers, 1 Slack Line, 1 Rocking Plank, 1 Bars & Joints, 1 Tilting Disc.	Age	Product size (cm) Ø L W H			Single unit box weight kg	Single unit box volume m³	Number of units in export carton	Export carton weight kg	Export carton volume m³
	2-10				23.0	0.261	1	23.0	0.261

Design: Arne Egholm

European Community Design Nos. 001248967-001-004.

Patent nos. ZL 201230340321.8, ZL 2012.30340374.X



Scan QR
for more
inspiration.



2238



2229



2239

BUILD N' BALANCE®

Build N' Balance® Planks | Art 2222

Set of 3 Planks made of plastic and strengthened with steel bars. Maximum load 100 kg.	Age	Product size (cm)			Single unit box weight kg	Single unit box volume m³	Number of units in export carton	Export carton weight kg	Export carton volume m³
	2-10	72	13	3	7.00	0.010	3	21.80	0.035

Patent no. ZL201230340374.x

Build N' Balance® Triangular Platform | Art 2223

Made in plastic. Maximum load 75 kg.	Age	Product size (cm)			Single unit box weight kg	Single unit box volume m³	Number of units in export carton	Export carton weight kg	Export carton volume m³
	2-10	59	2		3.00	0.020	1	3.00	0.020

Build N' Balance® Slack Line | Art 2224

Made of steel-reinforced plastic. Polyester line and metal tightening mechanism. Maximum load 50 kg.	Age	Product size (cm)			Single unit box weight kg	Single unit box volume m³	Number of units in export carton	Export carton weight kg	Export carton volume m³
	4-10	73	13	8	2.50	0.010	3	8.00	0.039

An element with a 5 cm wide 68 cm long belt to cross on the way to the next top (not included). A really great balancing challenge! The Slack Line can be tightened if required.

Build N' Balance® Rocking Plank | Art 2225

Made of plastic. Maximum load 50 kg.	Age	Product size (cm)			Single unit box weight kg	Single unit box volume m³	Number of units in export carton	Export carton weight kg	Export carton volume m³
	3-10	72	13	10	1.90	0.010	3	7.00	0.054

Element with integrated rocking function – the children have to transfer their weight as they move from top to top (not included). The plank moves 6 cm as it rocks.

Build N' Balance® Top10 | Art 2226

Made of plastic with artificial rubber edges to avoid slipping. Stackable for easy storage. Yellow. Maximum load 100 kg.	Age	Product size (cm)			Single unit box weight kg	Single unit box volume m³	Number of units in export carton	Export carton weight kg	Export carton volume m³
	2-10	27		10	0.46	0.007	6	3.30	0.036

Build N' Balance® Top24 | Art 2227

Made of plastic with artificial rubber edges to avoid slipping. Stackable for easy storage. Red. Maximum load 100 kg.	Age	Product size (cm)			Single unit box weight kg	Single unit box volume m³	Number of units in export carton	Export carton weight kg	Export carton volume m³
	2-10	40		24	1.25	0.038	6	8.10	0.110

Build N' Balance® Log Plank | Art 2228

1 Log Plank. Made of plastic. Colour: Green. Maximum load 100 kg.	Age	Product size (cm)			Single unit bag weight kg	Single unit bag volume m³	Number of units in export carton	Export carton weight kg	Export carton volume m³
	4-10	73	13	6	1.1	0.005	3	3.8	0.020

Log Plank has a curved surface which requires the child's complete attention and body control to keep his/her balance.

Design: Arne Egholm

European Community Design Nos. 001248967-001-004.

Patent nos. ZL 201230340321.8, ZL 2012.30340374.X



2222



2223



2224



2225



2226



2227



2228



Fun and challenging element for Build N'Balance® designed to strengthen children's proprioceptive sense and balance. The disc is not completely stable, but requires children to concentrate on keeping their balance. The Tilting Disc consists of two hard plastic parts combined around a thick and moveable rubber connector which gives way when children shift their body's centre of gravity. A really great balancing challenge! Must be placed in Top10 or Top24. Maximum load 75 kg.

Build N' Balance® Tilting Disc | Art 2232

1 Tilting Disc. Colours: Green and grey.	Age	Product size (cm)				Single unit box weight kg	Single unit box volume m³	Number of units in export carton	Export carton weight kg	Export carton volume m³
		Ø	L	W	H					
	+3	22			14	0.9	0.007	6	8.6	0.041

Build N' Balance® Tilting Disc Set | Art 2233

1 Tilting Disc Set. Colours: Green, grey and yellow.	Age	Product size (cm)				Single unit box weight kg	Single unit box volume m³	Number of units in export carton	Export carton weight kg	Export carton volume m³
		Ø	L	W	H					
	+3	22			21	1.3	0.017	6	10.4	0.104

Design: Arne Eggholm



2232



2233



2233

Bridge Pier allows children to build long, straight 'bridges'. The 'bridges' without intermediate platforms (existing Tops) increase the level of difficulty as the Bridge Pier is so narrow that it does not give children the option of taking a break – unlike the existing Tops. Made of plastic with non-slip edge of artificial rubber. Requires purchase of blue Planks for the 'bridge'. Maximum load 100 kg.

Build N' Balance® Bridge Pier | Art 2231

1 Bridge Pier. Colours: Orange and grey.	Age	Product size (cm)				Single unit box weight kg	Single unit box volume m³	Number of units in export carton	Export carton weight kg	Export carton volume m³
		Ø	L	W	H					
	+3	36	30	24		0.6	0.028	6	7.5	0.165

Design: Arne Eggholm



2231



2227 + 2231 x 2 + 2222 + 2226 + 2232

CONE

A multi-functional cone which can be used for countless activities. The holes (Ø=25 mm) make it possible to use the sticks in combination with the cones. The Hula Hoops can also be placed in the top slots. Stylish design in a range of bright colours. Made of plastic.



Cone | Art 2250

Set of six cones in six colours. Plastic.	Age	Product size (cm)				Single unit bag weight kg	Single unit box volume m³	Number of units in export carton	Export carton weight kg	Export carton volume m³
		Ø	L	W	H					
	2 +		21	28.5		1.9	0.021	6	14.7	0.125

Design: Harrit & Sørensen

STICKS

Set of six sticks. 100 cm x 2.5 cm. Made of high-quality plastic to make them almost unbreakable. Equipped with rounded stoppers at each end. Fits with Cone (Art 2250) and Build N' Balance® Tops (Arts 2226 and 2227).

Sticks | Art 2251

Set of six sticks. Colours: Orange and green. Plastic.	Age	Product size (cm)				Single unit bag weight kg	Single unit box volume m³	Number of units in export carton	Export carton weight kg	Export carton volume m³
		Ø	L	W	H					
	2 +	2.5	100			1.6	0.004	6	10.1	0.023

HULA HOOPS

Strong Hula Hoops made for rough and tumble play without risk of breaking. Can be combined with our Cones. Available in three sizes with diameters of 35 cm, 50 cm and 65 cm.

Hula Hoops 35 cm | Art 2252

Set of three rings. Colours: Yellow, red and blue. Plastic.	Age	Product size (cm)				Single unit bag weight kg	Single unit box volume m³	Number of units in export carton	Export carton weight kg	Export carton volume m³
		Ø	L	W	H					
	2 +	35				0.30	0.004	6	3.5	0.026

Hula Hoops 50 cm | Art 2253

Set of three rings. Colours: Yellow, red and blue. Plastic.	Age	Product size (cm)				Single unit bag weight kg	Single unit box volume m³	Number of units in export carton	Export carton weight kg	Export carton volume m³
		Ø	L	W	H					
	2 +	50				0.50	0.009	6	4.7	0.052

Hula Hoops 65 cm | Art 2254

Set of three rings. Colours: Yellow, red and blue. Plastic.	Age	Product size (cm)				Single unit bag weight kg	Single unit box volume m³	Number of units in export carton	Export carton weight kg	Export carton volume m³
		Ø	L	W	H					
	2 +	65				0.70	0.015	6	6.0	0.087



2250



2251



2253

2254

2252

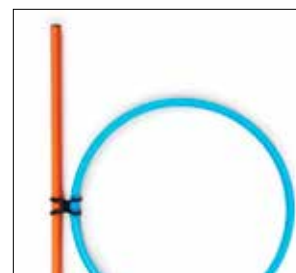


JOINTS

Versatile joint fitting our Sticks Ø25 mm (Art 2251) as well as our Hoops (Arts 2252, 2253 & 2254). Sticks can be mounted vertically and/or horizontally with the joint which also has a grip into which a hoop will fit. Pair of two.

Joints | Art 2255

Colour: Red. Made from POM.	Age	Product size (cm)				Single unit box weight kg	Single unit box volume m ³	Number of units in export carton	Export carton weight kg	Export carton volume m ³
		Ø	L	W	H					
	2-10	8.5	3	4		0.1	0.0001	6 x 2	0.7	0.001





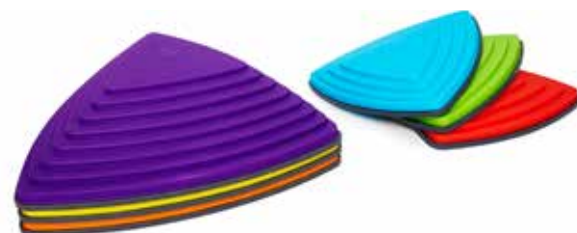


RIVER STONES

Stepping stones to better coordination, balance and fun. The River Stones are inspired by stepping stones in a river with each side of the triangle varying in steepness and difficulty. The purpose is to jump from stone to stone without touching the floor – you can vary the position of the stones to create more challenging paths for children. Each stone has a rubber rim on the base which prevent them from slipping, and also protect indoor floor areas. Provides challenging, active, imaginative fun. Builds children's confidence when jumping, judging distances, co-ordinating and balancing. River Stones can be stacked so that they are practical to store. Incl. suggestions for games. Maximum load 100 kg.

River Stones | Art 2120

	Age	Product size (cm)				Single unit box weight kg	Single unit box volume m³	Number of units in export carton	Export carton weight kg	Export carton volume m³
		Ø	L	W	H					
Set og 6 stones in 6 colours	2 +					2.50	0.021	4	11.10	0.100
3 big stones		36	36	8.5						
3 small stones		25	25	4.5						



Design: Harrit & Sørensen
Patent no. ZL201230344761.0



Scan QR
for more
inspiration.



HILLTOPS

Hilltops offers high play value and ample opportunity to develop and stimulate children's gross motor skills, social skills, and – not least – their creativity.

Five 'hilltops' in different heights which will inspire children to jump from top to top. Hilltops develop children's ability to estimate distances and make them familiar with heights. Each top is provided with a rubber rim which prevent them from slipping and protect the floor. Hilltops are made so that they can not overturn. Incl. suggestions for games.

Maximum load 100 kg.



Hilltops | Art 2121

	Age	Product size (cm)				Single unit box weight kg	Single unit box volume m³	Number of units in export carton	Export carton weight kg	Export carton volume m³
		Ø	L	W	H					
Set of 5 tops in three heights	2 +					4.80	0.057	3	15.80	0.180
2 tops		36	36	8.5						
2 tops		40.5	40.5	17						
1 tops		42	42	25.5						

Design: Harrit & Sørensen

Patent no. ZL201230344761.0



Scan QR
for more
inspiration.



MOUNTAIN

A large mountain (height 32 cm) designed to challenge children to reach the top by climbing up the broad steps. Stimulates infants to crawl up the steps, whilst older children can use the Mountain as stairs. Infants can experiment by jumping down from the Mountain, and the 4 plateaux suit different levels of daring! The Mountain is also ideal for use as seating. Can be used for movement stimulating play and exercise as a supplement to River Stones and Hilltops. Maximum load 100 kg.

Mountain | Art 2122

Fitted with non-slip rubber feet.	Age	Product size (cm)				Single unit box weight kg	Single unit box volume m³	Number of units in export carton	Export carton weight kg	Export carton volume m³
		Ø	L	W	H					
	2 - 8	65.5	49	32		2.30	0.100	6	14.30	0.230

Design: Harrit & Sørensen



Scan QR for more inspiration.



ISLAND AND BRIDGE

Island and Bridge are elements designed to create totally new ways of playing and stimulating movement as a supplement to River. Combining Island and Bridge with River gives innumerable options for building landscapes for balance and movement. Made from durable plastic with anti-slip rubber edge. The Island will form the natural centre junction or “refuge”.

Bridge makes a challenging obstacle which children can balance on as they cross over. It can also be used in a cross format to represent a river running under a bridge. Maximum load 100 kg.

Island | Art 2124

Set of two in the colours red and green.	Age	Product size (cm)				Single unit box weight kg	Single unit box volume m³	Number of units in export carton	Export carton weight kg	Export carton volume m³
		Ø	L	W	H					
	2 - 8	43	43	7		1.80	0.018	6	11.60	0.110

European Community Design No. 463369-0001

Bridge | Art 2165

Set with 2 Bridge elements in yellow and blue.	Age	Product size (cm)				Single unit box weight kg	Single unit box volume m³	Number of units in export carton	Export carton weight kg	Export carton volume m³
		Ø	L	W	H					
	2 - 8	50	14	7		1.00	0.007	8	9.40	0.080

Design: Harrit & Sørensen



Scan QR
for more
inspiration.

RIVER

River provides unlimited possibilities for building balance paths!

The elements are easy to join and very flexible, so only the imagination sets limits to the course of the river. Due to the size of the elements even small children will be able to build a “river”. Made from durable plastic with anti-slip rubber edges, the river combines high quality with attractive design.

The elements are stackable for easy storage. Can be combined with the “Island” and the “Bridge”. Maximum load 100 kg.

River | Art 2123

6 colours.	Age	Product size (cm)				Single unit box weight kg	Single unit box volume m³	Number of units in export carton	Export carton weight kg	Export carton volume m³
		Ø	L	W	H					
7 elements	2 - 8					1.80	0.010	8	14.70	0.100
6 elements		35.5	11.5	4.5						
1 element		15.5	8.5	4.5						

Design: Harrit & Sørensen

European Community Design No. 438015

Patent no. ZL201230344106.5



Scan QR
for more
inspiration.





RIVER LANDSCAPE

An exciting balance landscape with no less than 25 elements which can be combined in any number of ways. This is a set able to provide innumerable options for balance training, movement exercises and group play. Play scenarios are included. Maximum load 100 kg.

Set includes:

River (21 elements) + Island (2 elements) + Bridge (2 elements).

River Landscape | Art 2166

Made from plastic with artificial rubber edges. 6 colours.	Age	Product size (cm)				Single unit box weight kg	Single unit box volume m ³	Number of units in export carton	Export carton weight kg	Export carton volume m ³
		Ø	L	W	H					
	2 - 8					8.20	0.050	1	8.50	0.050

Design: Harrit & Sørensen



Scan QR
for more
inspiration.







TACTILE DISCS

An inviting tactile material that challenges children's sense of touch on both hands and feet. At the same time, it develops the ability to describe sense impressions verbally. The tactile discs, made of nice-to-touch synthetic rubber, contain different tactile structures, each with its own colour. Each of the tactile structures can be found on a large disc for positioning on the floor, as well as on a small disc that the child will be able to hold in his/her hands. In terms of playing, the discs offer innumerable possibilities ranging from a fundamental sensing of the tactile structures to blindfold games based on memory and recognition. The games can be adjusted, so that they fit the child's age and level of functionality. Maximum load 100 kg.

Tactile Discs – complete set | Art 2116

A set of 10 different tactile structures in a range of colours (10 large and 10 small discs), a blindfold and a large cloth bag.	Age		Product size (cm)			Single unit box weight kg	Single unit box volume m ³	Number of units in export carton	Export carton weight kg	Export carton volume m ³
	2 - 8	11+27	Ø	L	W H					
	2 - 8	11+27				5.2	0.031	3	16.7	0.110

Tactile Discs – set 1 | Art 2117

Contains 5 large and 5 small discs, a blindfold and a cloth bag.	Age		Product size (cm)			Single unit box weight kg	Single unit box volume m ³	Number of units in export carton	Export carton weight kg	Export carton volume m ³
	2 - 8	11+27	Ø	L	W H					
	2 - 8	11+27				2.70	0.016	4	11.5	0.080

Tactile Discs – set 2 | Art 2118

Contains 5 large and 5 small discs, a blindfold and a cloth bag.	Age		Product size (cm)			Single unit box weight kg	Single unit box volume m ³	Number of units in export carton	Export carton weight kg	Export carton volume m ³
	2 - 8	11+27	Ø	L	W H					
	2 - 8	11+27				2.70	0.016	4	11.5	0.080

Design: Dejbjerg Design

European Community Design Nos. 266010-0001 ... 0006

Patent nos. ZL201330163534.2, ZL201330163507.5, ZL201330163578.5, ZL201230344020.2



Scan QR for more inspiration.



2116



2117



2118





FISH

A set of fun and brilliantly coloured fish. The fish have a hard plastic surface with non-skid structures fitted on an inflated base. The hard surface ensures a good footing while the inflated base yields to the child's movements. Playing with Fish is challenging for motor functions as children continually have to adjust their ankles and legs in order to find and keep the balance on Fish. The fish can be used as a stepping stone either during free play or as part of structured activities.

Maximum load 75 kg.

Set of 4 Fish | Art 2172

	Age	Product size (cm)				Single unit box weight kg	Single unit box volume m³	Number of units in export carton	Export carton weight kg	Export carton volume m³
		Ø	L	W	H					
Made from HDPE & TPE.	3 +	38	22	4.5		2.3 kg	0.0163	3	7.4	0.052



EYES FOR FISH

Eyes for fitting on the fish. Use fingers to press the loop together after which the eye is pushed up from below through the hole in the fish. The eyes make it possible to catch the fish with a fishing rod (Art 2175).

The eyes are made from artificial rubber and come in a set of 5 colours

Eyes for Fish | Art 2174

Set of 5 eyes in 5 colours. Made from TPE.	Age	Product size (cm)				Single unit box weight kg	Single unit box volume m³	Number of units in export carton	Export carton weight kg	Export carton volume m³
		Ø	L	W	H					
	3 +	15	12	3		0.06	0.0006	8	0.7	0.004



SHOAL OF FISH

The shoal of small fish is ideal for free play, but also perfect for teaching situations. Children are able to hide small items in the 'belly' of the shoal fish as part of memory, sorting and naming games in linguistic or cognitive learning. The element of surprise in discovering what the fish has 'eaten' provides excitement and motivation for children and keeps their attention in a teaching situation. The small orange buttons on the shoal fish make it possible to 'catch' them with the fishing rod magnet (Art 2175). Children compete in catching most fish or in first finding a certain item hidden among the fish (memory game). Shoal with 5 small fish.



Shoal of Fish | Art 2176

Red EVA foam with orange metal buttons.	Age	Product size (cm)			Single unit box weight kg	Single unit box volume m³	Number of units in export carton	Export carton weight kg	Export carton volume m³
	3 - 6	Ø	L	W	H				
		15	9	5	0.35	0.005	8	3.70	0.050

Design: Harrit & Sørensen



Scan QR
for more
inspiration.



FISHING ROD

With this fishing rod, children are ready for a fishing trip. The desire to catch a fish makes children challenge their attention, balance and hand-eye coordination. Getting close to the fish and getting it on the hook so that it can be landed require motor skills and mental concentration. Children can land the fish (boat-hook) or challenge themselves with a hook and line. Depending on the 'fish' to be caught, the 'fisherman' has to use the hook or the magnet on the hook. Shoal fish (Art 2176) are well-suited for use with the fishing rod, but many other items in the children's environment can also be 'caught'. The fishing rod is very versatile and can be used in imaginary and role-playing games that include interaction and language. Several children can also compete for 'Who catches the most fish without falling in the water?'.

Fishing Rod | Art 2175

The fishing rod is made of non-breakable plastic with artificial rubber handle. The rod has a strong ceramic magnet on the under of the hook. 1 unit included.		Product size (cm)				Single unit box weight kg	Single unit box volume m³	Number of units in export carton	Export carton weight kg	Export carton volume m³
	Age	Ø	L	W	H					
	2 +	90				0.30	0.0015	8	3.00	0.016

Design: Harrit & Sørensen

European Community Design No. 001135826

Patent no. ZL201230342844.6



Scan QR
for more
inspiration.



High quality ceramic magnet

FLOOR SURFER®

Roller board for play and therapy. The Floor Surfer® appeals to children and combines play and the training of motor skills. The Floor Surfer® has been developed in partnership with children's physiotherapists to ensure safe use by any child irrespective of motor skills level. The Floor Surfer® combines function, safety and design. Maximum load 100 kg.

Floor Surfer® | Art 2168

	Age	Product size (cm)				Single unit box weight kg	Single unit box volume m³	Number of units in export carton	Export carton weight kg	Export carton volume m³
		Ø	L	W	H					
	1½ - 10	56	37	14		2.90	0.033	4	13.00	0.150

Design: Harrit & Sørensen
European Community Design No. 10716488
Patent no. ZL201230340445.6



Scan QR
for more
inspiration.



- The wheels are screened to minimise the risk of running over the child's fingers (photo 1).
- Quality wheels with double ball bearings and non-smudging wheels in clear PU.
- The Floor Surfer® is slightly tapered at the front to give increased freedom of movement for the child's arms (photo 2).
- The raised front part of the Floor Surfer® supports the coccyx when the child is sitting (photo 3) and the sternum when child is lying down (photo 2).
- The narrow sides act as handles where the child's hands are protected by the protruding corners (photo 4).





ROBO-BOARD

The Robo-Board trains weight transfer, dynamic balance and provides proprioceptive stimulation for children from 4 years.

The Robo-Board moves easily by means of the child's weight transfer from side to side. When the child's weight is shifted to one side using muscular force and rotation around the spinal column, the child can rotate in a circular movement of up to 360 degrees.

The Robo-Board can be used to help children from four years to improve their muscle coordination, body consciousness, quality of movement and sense of flow, rhythm and regulation of force in their legs. The experienced user can get Robo-Board spinning and dancing – and can do tricks with it. Its cool visual design and multiple uses help to make Robo-Board challenging and inspiring for children of all ages – including teenagers. Max load 75 kg.

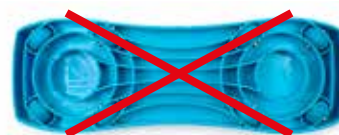
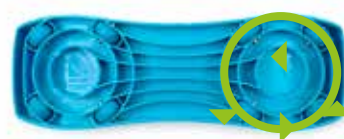


Robo-Board | Art 2260

	Age	Product size (cm)			Single unit box weight kg	Number of units in export carton	Export carton weight kg	Export carton volume m³
		Ø	L	W				
PP & TPE plastic	4 +	50	16.5	8.5	1.25	6	8.1	0.032



Scan QR
for more
inspiration.



Robo-Board has eight wheels. These are positioned so that the Robo-Board rotates when the child's weight is tipped onto four wheels on one side, whereas the board locks when the load is centred over the four wheels in the middle.

Pat. Pend. DK PA 2016 70022



ROLLER

The Roller is a beautiful new conceptualisation of a fundamentally challenging motor activity object. Leave it out, and you will see both children and grown-ups tempted to test their skills by stepping up and trying to set the Roller in motion. It offers a progressive motor skills challenge, from small kids just managing to keep their balance with the support of a friend or a hand rail, to older children pushing the boundaries of what they can do without falling off. Whether it is used for play or in therapy, the Roller will stimulate the primary proprioceptive sense, as well as the vestibular and tactile senses.

The Roller is safe to use, as the compression of its rubber tyres naturally reduces the speed while making play virtually silent and protecting the ground surface from damage. This is combined with a rubber tread which provides a safe grip and offers additional tactile stimulation when rolling with bare feet. For younger children, the green version of the Roller contains 2.5 kg of sand, further reducing the speed and enabling even small children to master balancing and rolling. Material: PP plastic and TPE artificial rubber. Max load 100 kg.

Roller with sand | Art 2266

Colour: Green and grey	Age	Product size (cm)				Single unit box weight kg	Single unit box volume m³	Number of units in export carton	Export carton weight kg	Export carton volume m³
		Ø	L	W	H					
	4 +	29.5	35.5			5.75	0.031	3	18.25	0.099

Roller without sand | Art 2267

Colour: Orange and grey	Age	Product size (cm)				Single unit box weight kg	Single unit box volume m³	Number of units in export carton	Export carton weight kg	Export carton volume m³
		Ø	L	W	H					
	7 +	29.5	35.5			3.25	0.031	3	10.6	0.099



Scan QR
for more
inspiration.



Art 2267



Art 2266



BABY TRAMPOLINE

On this trampoline very small children can practise trampoline jumping. The canvas is tensioned such that even small children will experience a springing effect which they would be too light to feel on ordinary trampolines. The spring sheet is only 18 cm above the floor. The rubber cover yields protection against the metal frame and the supporting handles are covered with foam to protect face and teeth. The construction is solid – beautiful design combines simplicity and function. With focus on safety - for children up to 20 kg.

Baby Trampoline | Art 2406

	Age	Product size (cm)				Single unit box weight kg	Single unit box volume m³	Number of units in export carton	Export carton weight kg	Export carton volume m³
		Ø	L	W	H					
	1½ - 4	70			20/65	9.00	0.108	1	9.00	0.108

Design: Harrit & Sørensen

Patent no. ZL201230403668.2



TRAMPOLINE

Functionally correct and beautifully designed toy for children. Probably the most beautiful and most suitable trampoline ever seen in the child-care sector. The sloped protective cushion with high rear edge (11 cm) yields utmost protection during play. Foam-covered handle is included. Reinforced springsheet suspended in steel springs. Welded steel construction. Maximum load 50 kg.

Trampoline | Art 2400

For indoor use only.	Age	Product size (cm)				Single unit box weight kg	Single unit box volume m³	Number of units in export carton	Export carton weight kg	Export carton volume m³
		Ø	L	W	H					
	3 - 10	103			28/80	23.10	0.200	1	23.10	0.200

Design: Harrit & Sørensen

Patent no. ZL201230403887.0



MOTOR SKILLS DEVELOPMENT SET

Art 2600

Complete motor-skills development set comprising the best Gonge products! Play forms the basis for learning! This motor-skills development set is designed to enhance motor, cognitive and social skills ... and also to stimulate the senses and awareness of colours. The set provides ample opportunity for fun play, both individually and in groups. Several products also include a guide to help inspire both play and learning.

Motor Skills Development Set® | Art 2600

Set size (cm)			Export carton weight kg	Export carton volume m ³
L	W	H		
81	66	81	24	0.433

Art 2600 contains following products:

FloorSurfer | Art 2168
Giant Top | Art 2100
Clown's Hat x 2 | Art 2127
Seesaw I Art 2169
Activity Rings | Art 2191
Tactile Discs | Art 2117
River Stones | Art 2120
Hill Tops | Art 2121
River | Art 2123



RETAIL PACKAGING

Gonge is currently developing retail packaging for the company's most popular products. Text and images on the packaging will efficiently communicate product characteristics in six languages. The new packaging is our response to the increasing demand for our products from parents and other private consumers.





MINI TOP

The Mini Top was developed with particular focus on the motor-skill development of children aged 0-4. The Mini Top invites young children to teeter, swing and spin around – at first with the help of an adult and subsequently on their own. It encourages motor activities which are important for a child's early development of his/her sense of balance (the vestibular system) and motor control. The shape of the Mini Top makes it safe for young children: it is dimensioned (diameter 68 cm, depth 26.5 cm) to be big enough, but not too big, for young children. The geometric shape ensures that the tilting motion gradually slows down and prevents the child from tipping over at the same time.

The Mini Top has been carefully designed to make sure that both the child's head and fingers are protected during play. Simple, functional design.

Maximum load 50 kg.

Mini Top | Art 2099

Made of plastic.	Age	Dimensions (cm)				Unit weight, kg	Quantity in export carton	Colour
		Ø	L	W	H			
	0 - 4	68			26,5	1.6	16	Orange



Scan QR
for more
inspiration.



Soft cushion intended to make infants feel safe and comfortable in the Mini Top.
Made from quilted fabric with anti-skid rubber dots at the bottom side.

Cushion for Mini Top | Art 2098

Available from autumn 2014.	Age	Dimensions (cm)				Unit weight, kg	Quantity in export carton	Colour
		Ø	L	W	H			
	0 - 2	64				0.35	8 pcs	Grey

Design: Harrit & Sørensen

European Community Design No. 2155747-0005

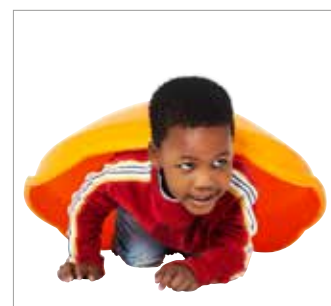
Patent no. ZL20133028054.3



The cushion is made from quilted fabric with anti-skid rubber dots at the bottom side.



The vertical edge protects the child's fingers and head from getting squeezed.



TOP

A wonderful giant top for hours of fun. Top for 1 or 2 children. Lots of uses: use it to rock from side to side, spin it, build a den, etc. Small children can even use it as a boat in the pool (only under adult supervision). Develops children’s physical coordination while they play. Made of strong plastic for both indoor and outdoor play. Very suitable for basic physical coordination training with disabled people. Maximum load 100 kg.

Top | Art 2100

6 pieces.	Age	Product size (cm)				Single unit box weight kg	Single unit box volume m³	Number of units in export carton	Export carton weight kg	Export carton volume m³
		Ø	L	W	H					
	3 - 10	80			44	3.00	0.028	6	27.60	0.600

Top | Art 2101

33 pieces.	Age	Product size (cm)				Single unit box weight kg	Single unit box volume m³	Number of units in export carton	Export carton weight kg	Export carton volume m³
		Ø	L	W	H					
	3 - 10	80			44	3.00	0.028	33	111.10	1.640

Patent no. ZL201230342830.4



Scan QR for more inspiration.



Take a good look at our original top. Only the original top is shaped with a pointed centre. This enables children to get the feeling of turning upside-down when moving the top 360° around the centre (photo 1).

The edge of the top protects children’s heads and hands from getting hurt (photo 2+3).

Raised edges prevent children from getting their fingers caught under the top. At the same time there is no risk of suffocation if children hide inside the top (photo 4).





ROCK AROUND

A spherical rocking toy for indoors or outdoors. Children can sit in it and rock it from side to side, or spin around. There is even room for two smaller children to sit in it together. Users can hold on to the rim without getting their hands jammed between the rim and the floor. Develops physical coordination skills.

Rock Around | Art 2104

	Age	Product size (cm)				Single unit box weight kg	Single unit box volume m³	Number of units in export carton	Export carton weight kg	Export carton volume m³
		Ø	L	W	H					
	1½ - 5	75			14	1.70	0.100	30	55.00	0.400



ROUND SEESAW

The Round Seesaw amuses and excites children as it can move in all directions. The Round Seesaw is particularly suited for smaller children and can be used by one child alone or two children simultaneously. The robust handles are covered with soft foam. Maximum load 60 kg.

Round Seesaw | Art 2106

The robust handles are covered with soft foam.	Age	Product size (cm)				Single unit box weight kg	Single unit box volume m³	Number of units in export carton	Export carton weight kg	Export carton volume m³
		Ø	L	W	H					
	3 - 8	76			60	8.00	0.100	1	8.00	0.100



KOALA

Decorative toy with a wealth of possibilities. When children sit inside the Koala, they are able to rock or spin like a carousel. If the Koala is turned upside down, it becomes a small den. Several Koalas can even be combined into a play tunnel. Playing with the Koala stimulates children's vestibular sense and develops their balance. Can be used by one or more children. The Koala is made from thick (8 mm) plastic. The exterior has a circular moulding that prevents the Koala from rolling around and children falling out or jamming their fingers. Maximum load 50 kg.

Koala | Art 2097

	Age	Product size (cm)				Single unit weight kg	Single unit volume m³	Number of units in export carton	Export carton weight kg	Export carton volume m³
		Ø	L	W	H					
Plastic	1-6	65			45	3.2	0.17	4	15	0.206

Design: Hanspeter Steiger

European Community Design No. 2418848-0001

Patent no. ZL 2014 3 02400249.0



Scan QR
for more
inspiration.



KOALA NON-SLIP SHOES

Non-slip shoes for Koala made from artificial rubber. Set of 3.

Koala Non-slip shoes | Art 2095

	Age	Product size (cm)				Single unit weight kg	Single unit volume m³	Number of units in export carton	Export carton weight kg	Export carton volume m³
		Ø	L	W	H					
Plastic	1-6	18	5	5		0.15	0.0005	4	0.8	0.002







SEESAW

Classic play equipment in a unique new design. Pliable synthetic rubber domes on the underside of the seesaw provide a softer, more dynamic movement. The seesaw has a non-slip surface. The base of the pivot is covered with synthetic rubber to reduce the risk of crushing and to prevent damage to the floor. Made in plastic with synthetic rubber cushioning. Maximum load 75 kg.

Seesaw | Art 2169

Classic play equipment in a unique new design.	Age	Product size (cm)				Single unit box weight kg	Single unit box volume m³	Number of units in export carton	Export carton weight kg	Export carton volume m³
		Ø	L	W	H					
	2 +	52	22	14		1.40	0.020	6	11.0	0.130

Design: Harrit & Sørensen
European Community Design No. 001965989-0001
Patent no. ZL201230340347.2



Scan QR
for more
inspiration.



CAROUSEL

Exciting mini carousel giving children a real spin! The seat is placed at a slight angle to allow the child to propel the Carousel by shifting the body's centre of gravity. Younger children are also able to set the seat in motion by pushing off with their feet. The seat has a thick edge to make it easy for children to get a good grip and hold on when the Carousel is moving. Playing with the Carousel develops muscle integration and strengthens muscles. Children's vestibular sense in combination with sight is also stimulated to help improve balance. The Carousel consists of a solid, moulded plastic seat which is placed on a steel disc mounted with a rotation joint including two ball bearings. A solid and stable metal base with rubber feet ensures safe spinning of the Carousel.

Maximum load 50 kg.

Carousel | Art 2167

Plastic, artificial rubber and steel	Age	Product size (cm)				Single unit box weight kg	Single unit box volume m ³	Number of units in export carton	Export carton weight kg	Export carton volume m ³
		Ø	L	W	H					
	3-10	56			34	6.0	0.072	3	18.5	0.215

Design: Harrit & Sørensen

European Community Design No. 2418848-0002

Patent no. ZL 2014 3 0240250.3



Scan QR
for more
inspiration.



GIANT BALANCING BOARD

For rocking from side to side, spinning around and balancing. Children can stand or sit on the board. With this toy children develop their motoric function and balancing abilities. With anti-skid profile and four integrated handle-bars. Both indoor and outdoor use possible. Maximum load 60 kg.

Giant Balancing Board | Art 2102

	Age	Product size (cm)				Single unit box weight kg	Single unit box volume m³	Number of units in export carton	Export carton weight kg	Export carton volume m³
		Ø	L	W	H					
	3 - 10	76			18	3.50	0.086	15	56.60	0.400



BALANCING BOARD

The balancing board is very suitable for balancing exercises and rehabilitation of both children and adults. Ideal for young children as the balancing board is completely smooth all the way round. Material: Wood – the board is provided with a rubber cover. Maximum load 100 kg.

Balancing Board | Art 2110

Black cover with hemisphere.	Age	Product size (cm)				Single unit box weight kg	Single unit box volume m³	Number of units in export carton	Export carton weight kg	Export carton volume m³
		Ø	L	W	H					
	4 +	35			8	1.40	0.010	6	9.20	0.060





WIPPSIDER

WippSider and WippWalker offer a sensomotoric exercise system for balancing reactions and motor control. Active motor playing exercises are combined with very high motivating aspects and simple to use. Both the WippSider and WippWalker are made of highly durable plastic. Maximum load 120 kg.

WippSider | Art 2181

Colour: Blue.	Age	Product size (cm)				Single unit box weight kg	Single unit box volume m³	Number of units in export carton	Export carton weight kg	Export carton volume m³
		Ø	L	W	H					
	3 +	52	12.5	9		0.50	0.006	12	7.00	0.080

WIPPWALKER

By shifting his/her weight, the child will be able to “walk” with the WippWalker – but it is not easy, and small children will find it challenging. You “walk” by alternately putting your weight on one foot and simultaneously moving the WippWalker with the other.

WippWalker | Art 2180

Colour: Green.	Age	Product size (cm)				Single unit box weight kg	Single unit box volume m³	Number of units in export carton	Export carton weight kg	Export carton volume m³
		Ø	L	W	H					
	3 +	52	12.5	9		0.60	0.006	12	8.20	0.080



2181 + 2180



THERAPY TOP

Therapy Top | Art 2140

Ripped surface. Colour: Red.	Age	Product size (cm)				Single unit box weight kg	Single unit box volume m³	Number of units in export carton	Export carton weight kg	Export carton volume m³
		Ø	L	W	H					
	4 +	40			9	1.20	0.014	6	7.20	0.090



BALANCO

Balanco is suitable for play, sports training and goal-directed rehabilitation. Balanco stimulates psycho and sensomotor functions, such as coordination, mobility, reaction, concentration, and improved posture. Balanco is available in two levels of difficulty. Each set contains 3 easily replaceable inserts with different challenges. Maximum load 120 kg.

Balanco | Art 2142

Mouse-game, 'Horizontal Eight' and Maze.	Age	Product size (cm)				Single unit box weight kg	Single unit box volume m³	Number of units in export carton	Export carton weight kg	Export carton volume m³
		Ø	L	W	H					
	3 +	55	42	16		3.40	0.037	5	18.00	0.160



2142

Balanco | Art 2143

Obstacle, YingYang, ZigZag	Age	Product size (cm)				Single unit box weight kg	Single unit box volume m³	Number of units in export carton	Export carton weight kg	Export carton volume m³
		Ø	L	W	H					
	3 +	55	42	16		3.40	0.037	5	18.00	0.160



2143

Balanco | Art 2942

Supporting straps	Age	Product size (cm)				Single unit box weight kg	Single unit box volume m³	Number of units in export carton	Export carton weight kg	Export carton volume m³
		Ø	L	W	H					
	3 +					0.20	0.001	1	0.160	0.001



2942

BALANCE PLASTIC HEMISPHERES

Unique quality with anti-slip rubber profile. Plastic hemispheres that challenge anybody's balancing skills. You can try to walk on the hemispheres with either side – the flat or the round side – up. They do not slip as they are heavy and filled with sand. Can withstand damp if left outdoor on the playground. Maximum load 100 kg.

Balance Plastic Hemisphere | Art 2128

Colourful set of six in red, blue and yellow; two of each colour.	Age	Product size (cm)				Single unit box weight kg	Single unit box volume m ³	Number of units in export carton	Export carton weight kg	Export carton volume m ³
		Ø	L	W	H					
	3 +	15			7	5.50	0.012	4	22.30	0.050



Scan QR for more inspiration.



HEMISPHERE STILTS

Practices balancing skills on hemispheres. A different and better design. A unique and functional design adapting to the child's walking movements in a natural way. Maximum load 100 kg.

Hemisphere Stilts | Art 2219

Made from plastic with anti-slip rubber profile. Red colour. 1 Pair.	Age	Product size (cm)				Single unit box weight kg	Single unit box volume m ³	Number of units in export carton	Export carton weight kg	Export carton volume m ³
		Ø	L	W	H					
	5 - 8	15			7	0.40	0.004	12	5.60	0.050



MINI STILTS

Unique stilts especially developed for younger children. The hard rubber handles provide a good grip that can be adapted to the height of the child. Depending on how brave the child is, the child can adjust the height of the stilts using the loose plateaus (from 3 cm to 15 cm). Even small children are able easily and safely to mount or remove the plateaux. The Mini Stilts are easier for younger children to use than pot stilts or traditional wooden stilts. The handles allow an older child or an adult to help younger children who have not yet mastered the stilts on their own. Made of plastic base with sole and handle of artificial rubber. The four plateaux are made of plastic. Maximum load 100 kg.

Mini Stilts | Art 2195

	Age	Product size (cm)				Single unit box weight kg	Single unit box volume m³	Number of units in export carton	Export carton weight kg	Export carton volume m³
		Ø	L	W	H					
	3 - 7	27	17	71		3.30	0.038	4	15.00	0.170

Design: Harrit & Sørensen
European Community Design No. 2155747-0001.
Patent no. ZL201230340311.4



SUMMER SKIS

Summer skis look easy to use, but it can be difficult to keep in step.
The skis train the basic motoric functions, as the children must coordinate their movements. Made of wood with anti-skid rubber pieces which protects the floor when used indoors.

Summer Skis | Art 2108

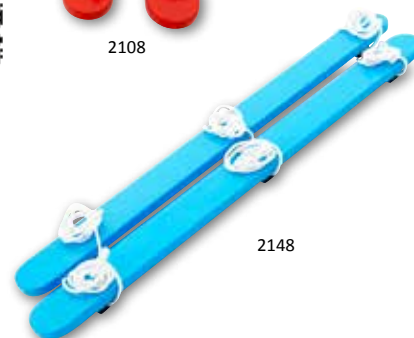
For 2 children	Age	Product size (cm)				Single unit box weight kg	Single unit box volume m³	Number of units in export carton	Export carton weight kg	Export carton volume m³
		Ø	L	W	H					
	5 +	88				1.50	0.006	10	16.50	0.070



Scan QR
for more
inspiration.



2108



2148

Summer Skis | Art 2148

For 3 children	Age	Product size (cm)				Single unit box weight kg	Single unit box volume m³	Number of units in export carton	Export carton weight kg	Export carton volume m³
		Ø	L	W	H					
	5 +	104				2.40	0.009	6	14.50	0.050





GO GO

The Go Go encourages exciting and challenging motor activity developing body control. The Go Go – 3rd generation – has a modern design reflecting the ambition to manufacture strong and beautiful toys that are safe, stimulating, and fun to play with. On the basis of years of experience, we have created Go Go to fulfill the quality requirements set forth by child care centres. Maximum load 50 kg.

Go Go | Art 2138

Plastic wheels and pedals, steel axle (Ø 14 mm) and rubber tyres.	Age	Product size (cm)				Single unit box weight kg	Single unit box volume m³	Number of units in export carton	Export carton weight kg	Export carton volume m³
		Ø	L	W	H					
	4 - 15	36	48	16		4.30	0.030	4	18.50	0.130



Scan QR for more inspiration.



Handles for Go Go | Art 2131

The pair of handles are made of steel (diam. 12 mm) covered with surface-reinforced foam (diam. 30 mm).	Age	Product size (cm)				Single unit box weight kg	Single unit box volume m³	Number of units in export carton	Export carton weight kg	Export carton volume m³
		Ø	L	W	H					
	4 - 7					1.90	0.009	4	8.00	0.010

Design: Harrit & Sørensen

GO GO BUS

The Go Go Bus reflects our aim of manufacturing sturdy and beautiful toys which are fun and safe for children and assist their motor development. When two or three children "board" the Go Go Bus, they have to coordinate their movements, which children find both challenging and fun. Based on our many years of experience, we have designed the Go Go Bus to meet the quality demands made by child care institutions. Maximum load 90 kg.

Go Go Bus | Art 2139

Plastic wheels and rubber tyres, plastic pedals with steel reinforcements, a steel axle (Ø 14 mm).	Age	Product size (cm)				Single unit box weight kg	Single unit box volume m³	Number of units in export carton	Export carton weight kg	Export carton volume m³
		Ø	L	W	H					
	4 - 15	53	48	16		6.00	0.050	3	19.60	0.170

Handles for Go Go Bus | Art 2136

The pair of handles (45 cm) are made of steel (Ø 12 mm) covered with surface-reinforced foam (diam. 30 mm).	Age	Product size (cm)				Single unit box weight kg	Single unit box volume m³	Number of units in export carton	Export carton weight kg	Export carton volume m³
		Ø	L	W	H					
	4 - 7					3.50	0.025	6	22.70	0.153

Design: Harrit & Sørensen





CLOWN'S HAT

The Clown's Hat encourages small children to perform – because it is not easy to balance with something on your head! Concentration and balance are required to wear the Clown's Hat which develops body consciousness and attention to posture. Playing with the Clown's Hat can be both individually challenging and form part of competitive scenarios. The Clown's Hat is shaped to make it easy for small children to use and the parts are so soft that dropping the rings does not hurt.

Clown's Hat | Art 2127

Contains five parts made of artificial rubbers and EVA foam.	Age	Product size (cm)				Single unit box weight kg	Single unit box volume m³	Number of units in export carton	Export carton weight kg	Export carton volume m³
	Ø	L	W	H						
	3 - 8	14.5		18		0.50	0.002	12	7.20	0.033

Design: Harrit & Sørensen

European Community Design No. 001248967-005-008

Patent no. ZL201230340444.1



Scan QR
for more
inspiration.



BALANCING EGG

Inspired by cultures where the ability to carry things on one's head is a necessity, this Balancing Egg is unique in combining a lot of fun with awareness of posture and development of balancing skills. The base of the egg is a soft ring that adapts to the head of each child. The skill now is to build your egg, piece by piece, on this base. Younger children can start by balancing one or two pieces of the egg. To challenge those who have perfected the skill (not an easy task), place some items inside the egg or challenge your little eggheads to a race!

Balancing Egg | Art 2129

Includes soft base made from artificial rubber and 5 plastic parts.	Age	Product size (cm)				Single unit box weight kg	Single unit box volume m³	Number of units in export carton	Export carton weight kg	Export carton volume m³
	Ø	L	W	H						
	7 - 14	20.5		40		1.60	0.012	8	14.00	0.100

Design: Harrit & Sørensen







ACTIVITY RINGS

New, brightly coloured Activity Rings that appeal to children of all ages – and to adults. Activity Rings can be used as inspiration for countless activities such as dancing in a circle, walking on tiptoe in the rings, balancing the rings on your head, juggling rings on arms and legs, throwing rings to each other, jumping with rings around your legs, building figures – the combinations are limitless. The rings can be used in both spontaneous and structured activities during play, rhythmic and gymnastics. Suitable for individual as well as social activities. The Activity Rings are made of soft artificial rubber.

Activity Rings | Art 2190

Set of 6 rings in 6 colours.	Age	Product size (cm)				Single unit box weight kg	Single unit box volume m³	Number of units in export carton	Export carton weight kg	Export carton volume m³
		Ø	L	W	H					
	1½ +	16.4				0.40	0.002	12	5.50	0.030

Activity Rings | Art 2191

Set of 24 rings in 6 colours.	Age	Product size (cm)				Single unit box weight kg	Single unit box volume m³	Number of units in export carton	Export carton weight kg	Export carton volume m³
		Ø	L	W	H					
	1½ +	16.4				1.50	0.009	6	9.80	0.060



Scan QR for more inspiration.





GIANT MIKADO

Traditional game of pick-up sticks transformed into physically challenging motor skills-training equipment. The rules are the same, but the large scale of the pick-up “sticks” (length 140 cm, diameter 2.8 cm) changes the game. One or more children hold the poles before letting them go and running away at the same time. The game is on, and the children either take turns removing poles or agree to work together, making the removing of the poles – without moving the other ones – a team effort.

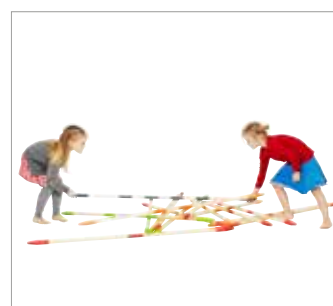
Giant Mikado is not only fun but also develops children’s physical, cognitive and social skills. Giant Mikado strengthens motor control, agility and, for the youngest players, muscle strength. At the same time it intensifies concentration and attention and also develops spatial orientation and planning skills. Giant Mikado stimulates children’s social skills, such as following rules, competing or joining forces to work together and coordinate the performance of a task.

- Safe: the pointed tips are made from soft artificial rubber with an air-filled compression zone.
- Simple colour indication of points is ideal for young children.
- The set consists of 20 wooden poles with artificial rubber tips packed in a fabric bag.

Giant Mikado | Art 2500

Made from FSC certified aspen wood and artificial rubber. Colours: Red, green, orange, grey.

Age	Product size (cm)			Single unit bag weight kg	Single unit bag volume m³	Number of units in export carton	Export bag weight kg	Export bag volume m³
	Ø	L	W					
5 +	150	18	18	11.5	0.045	1	11.5	0.045



RING TOSS

A traditional game in a unique quality and design. The popular tossing game is challenging both physically and mentally as it requires concentration and body control to assess the distance and throw the rings with precision. At the same time, the game is fun as it can be used in many kinds of competition. The game includes two supports so that it can be placed at an angle to make the game easier for very small children.

Ring Toss | Art 2908

The game is made of metal and the rings of soft artificial rubber.	Age	Product size (cm)				Single unit box weight kg	Single unit box volume m ³	Number of units in export carton	Export carton weight kg	Export carton volume m ³
		Ø	L	W	H					
	3 +	50	50	18		1.70	0.050	8	14.20	0.050



Scan QR
for more
inspiration.



THROWING GAME

A functional construction with quality materials and elegant design. A large stand mounted with polyester bags in four different colours. The stand comes with six soft juggling balls. Suitable for small children +2 years.

Throwing Game | Art 2907

	Age	Product size (cm)				Single unit box weight kg	Single unit box volume m ³	Number of units in export carton	Export carton weight kg	Export carton volume m ³
		Ø	L	W	H					
	2 - 6	70			67	5.50	0.039	1	5.50	0.039



Scan QR
for more
inspiration.







PARACHUTE

Playing with the parachute provides exercise for the whole body – for everyone!
A wonderful way of developing basic physical coordination. Inspires many types of activities for groups of children or grown-ups. Made of colourful, lightweight, fire-resistant polyester. Very strong handles.

The parachutes have a strong 10 mm thick rope sewn into the outer edge, allowing an almost unlimited number of people to play at the same time.

Maximum load 10 kg.



Parachute 1.75 m | Art 2301

8 Handles. Perfect for indoor use in limited space.		Product size (cm)				Single unit box weight kg	Single unit box volume m³	Number of units in export carton	Export carton weight kg	Export carton volume m³
	Age	Ø	L	W	H					
	2 +	175				0.30	0.002	25	8.40	0.042



Scan QR
for more
inspiration.

Parachute 3.5 m | Art 2302

8 Handles.	Age	Product size (cm)				Single unit box weight kg	Single unit box volume m³	Number of units in export carton	Export carton weight kg	Export carton volume m³
		Ø	L	W	H					
	3 +	350				0.80	0.003	24	20.50	0.081

Parachute 5 m | Art 2303

12 Handles.	Age	Product size (cm)				Single unit box weight kg	Single unit box volume m³	Number of units in export carton	Export carton weight kg	Export carton volume m³
		Ø	L	W	H					
	3 +	500				1.35	0.007	15	21.00	0.100

Parachute 6 m | Art 2304

12 Handles.	Age	Product size (cm)				Single unit box weight kg	Single unit box volume m ³	Number of units in export carton	Export carton weight kg	Export carton volume m ³
		Ø	L	W	H					
	3 +	600				1.70	0.008	12	21.40	0.100

Parachute 7 m | Art 2305

16 Handles.	Age	Product size (cm)				Single unit box weight kg	Single unit box volume m³	Number of units in export carton	Export carton weight kg	Export carton volume m³
		Ø	L	W	H					
	3 +	700				2.25	0.011	8	19.50	0.090



2301 No string



2302-5 String

PARACHUTE ENCOURAGING EXERCISE

Book with inspiration, play ideas and background for activities involving parachutes. The book provides very detailed descriptions of how the parachutes can be used in educational work in childcare centres and schools. The book is full of play ideas for children to create fun and meaningful physical activity. The book also describes how parachute games stimulate social and intellectual development. Available in 6 languages. 56 pages with colour illustrations.



PARACHUTE. ENCOURAGING EXERCISE (Art 2914)
 DAS SCHWUNGTUCH ALS BEWEGUNGSTRUMENT (Art 2915)
 IL PARACADUTE GIOCHI IN MOVIMENTO (Art 2916)
 EL PARACAÍDAS COMO UN INSTRUMENTO DE MOVIMIENTO (Art 2917)
 LE PARACHUTE JEUX EN MOUVEMENT (Art 2918)
 SPADOCHRON JAKO INSTRUMENT DO PORUSZANIA SIE (Art 2919)



MAGIC SCARVES

Light nylon scarves in happy colours (yellow, red, blue, and green) which invite for play! Swing the scarves in the air and see them fall. Use them as magic scarves or play at ghosts by putting them over your heads. Can be used individually or in group play.

Magic Scarves 66 cm | Art 2306

Set with 12 pcs. in 4 colours.	Age	Product size (cm)				Single unit box weight kg	Single unit box volume m ³	Number of units in export carton	Export carton weight kg	Export carton volume m ³
		Ø	L	W	H					
	2 - 10	66		66		0.10	0.001	25	2.10	0.020

Magic Scarves 138 cm | Art 2307

Set with 4 pcs. in 4 colours	Age	Product size (cm)				Single unit box weight kg	Single unit box volume m ³	Number of units in export carton	Export carton weight kg	Export carton volume m ³
		Ø	L	W	H					
	2 - 10	138		138		0.10	0.001	25	2.70	0.020



MIRROR GAME

An exiting game with mirrors - both amusing and instructive.
Start by turning up a pattern card. Each player must then attempt to form a mirror image of this pattern using 2 bricks and a mirror. The first one to succeed wins the pattern card. Using the mirror can be tricky, and an understanding of the symmetry of a pattern is an advantage in this game.

Mirror Game | Art 2003

2 players. 2 plastic mirrors, 2 mirror bases, 4 pattern dice, 24 pattern cards.		Product size (cm)				Single unit box weight kg	Single unit box volume m³	Number of units in export carton	Export carton weight kg	Export carton volume m³
	Age	Ø	L	W	H					
	5 - 14		27	21	3.5	0.35	0.002	40	14.70	0.110



BLOW LOTTO

A unique, highly amusing game – develops breathing control and lip muscles! The players take turns at blowing the ball from one hole to another, which requires control of the direction and speed of the ball. 9 holes show different pictures, which are also featured on the players' lotto cards. The first player to cover all pictures is the winner.

Blow Lotto | Art 2006

Plastic frame, ball, insertion board with animal pictures on both sides, 4 lotto boards with animal pictures on both sides and 36 playing chips.

Age	Product size (cm)				Single unit box weight kg	Single unit box volume m ³	Number of units in export carton	Export carton weight kg	Export carton volume m ³
	Ø	L	W	H					
3 - 10	22	22	10		1.10	0.006	16	18.00	0.100

Design: Emil Wegger



TURBINO

Turbino is a spellbinding blowing game. It's easy to blow the propeller into motion – but it's not easy to control it to stop at a specific square! Turbino is a challenge and fun for all children. At the same time it develops their breathing control making. Turbino very suitable for training children with speech disorders. The game contains two picture circles with different degrees of difficulty.

Turbino | Art 2005

Plastic base and propeller, picture circle with animal pictures on either side, 2 fabric bags, 10 grey and 10 orange rubber rings.

Age	Product size (cm)				Single unit box weight kg	Single unit box volume m ³	Number of units in export carton	Export carton weight kg	Export carton volume m ³
	Ø	L	W	H					
4 - 10	22	22	10		0.80	0.006	16	14.00	0.100

Design: Harrit & Sørensen



Primary senses stimulated by Gonge

The vestibular sense

The vestibular system is a sensory system attached to the inner ear. It registers movement and position of the head in relation to space and the body. This is where balance is controlled, and where acceleration, changes of direction and movement are registered. Stimulation of the vestibular sense, in combination with other senses (primarily sight, touch and proprioception), is important for a child to become good at keeping their balance while still or moving.



The proprioceptive sense

Proprioceptive sensors are located in skeletal striated muscles and joints, providing information about the relative position of neighbouring parts of the body and strength of effort being employed in movement. Proprioception is what allows someone to learn to walk in complete darkness without losing balance. To learn any new skill, sport or art, it is usually necessary to become familiar with some proprioceptive tasks specific to that activity.



The tactile sense

The sense of touch recognises contact, pressure or traction exerted on the skin, as well as in some internal organs. Receptors on our skin relay information about the temperature, texture, shape, size, number and pressure of stimuli. When working efficiently, the tactile senses help a child to do everything from buttoning a shirt without looking, to enjoying a hug from a parent.



Art	Description	Page	Vestibular sense	Proprioceptive sense	Tactile sense
2097	Koala	47	●		
2099	Mini Top	43	●		
2101	Top	44	●	●	
2102	Balancing Board 76 cm	52	●		
2104	Rock Around	46	●		
2106	Round Seesaw	46	●		
2108/2148	Summer Skis 2 and 3 children	57		●	
2110	Balancing Board 35 cm	52	●		
2116-8	Tactile Discs	30			●
2119	Hemisphere Stilts	55	●	●	
2120	River Stones	22	●		●
2121	Hilltops	23	●	●	●
2122	Mountain	24	●	●	●
2123	River	25	●		●
2124	Island	25	●		
2127	Clown's Hat	61	●		
2128	Balance Plastic Hemispheres	55	●		
2129	Balancing Egg	61	●		
2138-9	Go Go and Go Go Bus	59	●	●	
2140	Therapy Top	53	●	●	
2142-3	Balanco	54	●	●	
2165	Bridge	25	●		●
2166	River Landscape	27	●		●
2167	Carousel	51	●		
2168	Floor Surfer®	34	●	●	●
2169	Seesaw	50	●	●	
2172	Fish	32		●	
2175	Fishing Rod	33		●	
2176	Shoal of Fish	33		●	
2180	WippWalker	53	●		
2181	WippSider	53	●	●	
2190-1	Activity Rings	64	●	●	●
2195	Mini Stilts	56	●	●	
2222	Build'n Balance® Plank	16	●		
2223	Build'n Balance® Platform	16	●		
2224	Build'n Balance® Slack Line	16	●	●	●
2225	Build'n Balance® Rocking Plank	16	●	●	
2226	Build'n Balance® Top10	16	●		
2227	Build'n Balance® Top24	16	●		
2228	Build'n Balance® Log Plank	16	●		
2229	Build'n Balance® Starter set	14	●		
2231	Build'n Balance® Bridge Pier	17	●		
2232-3	Build'n Balance® Tilting Disc	17	●	●	
2238-9	Build'n Balance® Intermediate/Advanced Set	14	●	●	
2250	Cone	18	●	●	
2251	Sticks	18	●	●	
2252-4	Hoops Ø 35, 50 & 65 cm	18	●	●	
2255	Joints	19	●	●	
2260	Robo-Board	37		●	
2266-7	Roller	59	●	●	●
2301-5	Parachutes - 1.75, 3.5, 5, 6 & 7 meters	70		●	
2306-7	Magic Scarves 66 & 138 cm	71		●	
2400	Trampoline	40	●	●	
2406	Baby Trampoline	40	●	●	
2500	Giant Mikado	66		●	
2907	Throwing Game	67		●	
2908	Ring Toss	37		●	

● High stimulation of the sense(s)

● Moderate stimulation of the sense(s)

GONGE

From materials for learning to learning by moving

Since 1966, Gonge has been inspired by the needs of schools and children's institutions. During that time, Gonge has found a unique niche, creating products to enhance children's learning by developing their motor skills.

School can lead to more than just learning

In 1966, a school teacher wanted to hand over his small company producing abacuses and other educational products to a former pupil – Karen Margrethe Gonge. He wanted no pay from Karen Margrethe and Jørgen Gonge as, in his words, “you don't deal with your dearest child”.

The Gonge family had to invest a lot of time and effort in learning about, and becoming experts in, their products, and it was hard work selling products that were quite new to the market. In 1967, ‘Skoleforlaget Gonge’, as the company was then called, participated in the international Didacta Fair for the first time. Soon after, a breakthrough came for the company.

In 1968, a German company purchased a large quantity of Gonge products. This cemented Gonge's belief in ‘products for learning’ and, in around 1970, Gonge started adding imported products to its range. The next step was taken in 1971, when products aimed at kindergartens were added to the learning products for schools.

From pioneers to leaders

One thing led to another, and Gonge grew from pioneers to market leaders in products that targeted new educational trends. Jørgen Gonge listened to teachers and professionals, involving them in the product development, and Gonge became part of these trends.

One of the products introduced was ‘Tummeumsken’, a red spinning top that became a part of the Gonge range in 1984. The top remains one of Gonge's best selling products, and it was displayed for an international audience at the Nürnberg Toy Fair in 1986, creating quite a sensation. Gonge has been present at the Nürnberg Fair ever since, and today exhibits its products alongside Winther's under the theme of ‘Learning by Moving’.



In 1991, Jørgen Gonge sold off the part of the business supplying Danish institutions to concentrate on exports. The company continued to grow and, as Jørgen decided to prepare for his retirement, his son Henrik Gonge took up the position of general manager in 2001. Henrik had grown up listening to his parents talking about the products while he himself played with them, and this foundation, together with a doctorate in psychology, was to inspire his further development of the brand.

A natural merger

Gonge has become an important global brand on the institutional market. Its product range has increasingly focused on helping children develop their motor skills, and Gonge is well known for products that make children move while playing.

Winther was another important Danish brand in this market, and the two companies were a perfect match. They were both family owned, shared the same values, and they both had product ranges which offered 'learning by moving'.

The match led to Gonge moving its headquarters from Brabrand, near Aarhus, to the Winther headquarters in Them, near Silkeborg.

Educational products for creative learning

Play as a mechanism for learning has been a key inspiration for Gonge and, over the years, the company has developed a philosophy of 'creative learning' through physical activity.

Gonge develops products where function, quality and design go hand in hand. More than that, Gonge products aim to stimulate the physical, cognitive and social development of children. Every product is designed to be flexible to the needs of the individual child, allowing it to be used in various ways depending on their functional level and motor skills.

GONGE® – also for Seniors

Several of our products are suitable for training and rehabilitation of adults and seniors.



RIVER STONES

Art 2120 (page 22)



HILLTOPS

Art 2121 (page 23)



RIVER

Art 2123 (page 25)

ISLAND

Art 2124 (page 25)

BRIDGE

Art 2165 (page 25)

RIVERLANDSCAPE

Art 2166 (page 27)



BUILD N' BALANCE® TILTING DISC

Art 2232 & 2233 (Page 17)



BUILD N' BALANCE®

Arts 2222-2239 (Pages 14-17)



PLASTIC HEMISPHERES

Art 2128 (Page 55)



TACTILE DISCS

Arts 2116, 2117 & 2118 (Page 30)



ROLLER

Arts 2266 & 67 (Page 39)



ROBO-BOARD

Art 2260 (Page 37)



SEESAW

Art 2169 (Page 50)



BALANCING BOARD

Art 2110 (Page 52)



PARACHUTES

Arts 2301-5 (Page 70)



ACTIVITY RINGS

Arts 2190 & 2191 (Pages 64-65)



GIANT MIKADO

Art 2500 (Page 66)



RING TOSS

Art 2908 (Page 67)



CLOWN'S HAT

Art 2127 (Page 61)



SUMMER SKIS

Arts 2108 & 2148 (Page 57)



FISHING ROD

Art 2175 (Page 33)

SHOAL OF FISH

Art 2176 (Page 33)

Gonge and Winther playing together

Gonge develops toys and educational products that stimulate play and physical activity for “creative learning”. Winther produces bikes, tricycles and other wheeled toys for “learning by moving”. These two philosophies matched so well that merging the companies was a natural development.

Gonge and Winther supply kindergartens and schools globally, as well as private families. The brands’ product ranges complement one another to offer a great variety of ways for children to play, move and learn.

Gonge merged with Winther on the 1st of July 2010. All subsequent trade of Gonge products, and all contacts, are handled through A. Winther A/S.



